



SZABO SCANDIC

Part of Europa Biosite

Produktinformation



Forschungsprodukte & Biochemikalien



Zellkultur & Verbrauchsmaterial



Diagnostik & molekulare Diagnostik



Laborgeräte & Service

Weitere Information auf den folgenden Seiten!
See the following pages for more information!



Lieferung & Zahlungsart

siehe unsere [Liefer- und Versandbedingungen](#)

Zuschläge

- Mindermengenzuschlag
- Trockeneiszuschlag
- Gefahrgutzuschlag
- Expressversand

SZABO-SCANDIC HandelsgmbH

Quellenstraße 110, A-1100 Wien

T. +43(0)1 489 3961-0

F. +43(0)1 489 3961-7

mail@szabo-scandic.com

www.szabo-scandic.com

[linkedin.com/company/szaboscandic](https://www.linkedin.com/company/szaboscandic) 

BLM Recombinant Monoclonal Antibody [BLR312M]

Rabbit Recombinant Monoclonal

Purified		RefSeq ID	NP_000048.1
Catalog No.	A700-312-T	Uniprot ID	P54132
Lot No.	1	GeneID	641

APPLICATIONS	WB, IP
SPECIES REACTIVITY	Human, Mouse
AMOUNT	20 µl (2 blots)
CONCENTRATION	1000 µg/ml
STORAGE/SHELF LIFE	2 – 8°C / 1 year from date of receipt
PHYSICAL STATE	Liquid
BUFFER	Phosphate Buffered Saline (PBS) with 0.09% Sodium Azide, BSA-Free
ISOTYPE	IgG
CLONE #	BLR312M
ORIGIN	USA
PRODUCTION PROCEDURES	Recombinant antibody was purified from cell culture supernatant.

Immunogen was a peptide representing a region between residue 1367 and the C-terminus (residue 1417) of human RecQ-like DNA helicase BLM using the numbering given in entry NP_000048.1 (Gene ID 641).

APPLICATIONS Centrifuge tube to remove product from lid. Optimal working dilutions should be determined experimentally by the investigator. Prepare working dilution immediately before use.

Western Blot	1:1,000
Immunoprecipitation	6 µl/mg lysate

APPLICATION NOTES All western blot analysis is performed using 5% Milk-TBST for blocking and as antibody diluent. Primary antibody is incubated overnight.

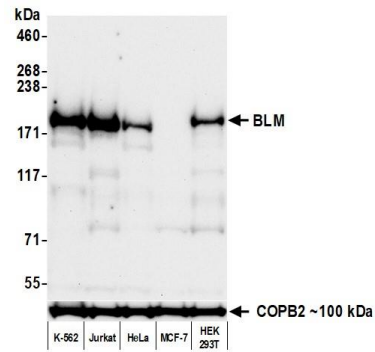
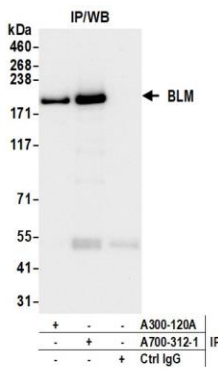
Western blots of cell lysates are performed using Goat anti-Rabbit IgG Heavy and Light Chain Antibody (Cat. No. A120-101P).

Western blots of immunoprecipitates are performed using Goat anti-Rabbit Light Chain HRP Conjugate (Cat. No. A120-113P) with 5% Normal Pig Serum (Cat. No. S100-020) added to the blocking buffer.

ADDITIONAL INFO <https://www.fortislife.com/p/A700-312-T>

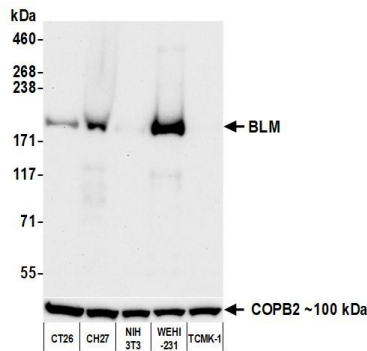
Use the link above to view SDS, a current list of citations, and other product specific information.

This document certifies that this product has met all of the quality control standards defined by Bethyl Laboratories, Inc.
Michael Spencer, PhD Date: February 27, 2024



Detection of human BLM by western blot of immunoprecipitates. *Samples:* Whole cell lysate (1.0 mg per IP reaction; 20% of IP loaded) from Jurkat cells prepared using NETN lysis buffer. *Antibodies:* Rabbit anti-BLM recombinant monoclonal antibody [BLR312M] (A700-312 lot 1) used for IP at 6 µl per reaction. BLM was also immunoprecipitated by a second antibody against a different epitope of BLM (A300-120A). For blotting immunoprecipitated BLM, A700-312 was used at 1:1000. *Detection:* Chemiluminescence with an exposure time of 30 seconds.

Detection of human BLM by western blot. *Samples:* Whole cell lysate (50 µg) from K-562, Jurkat, HeLa, MCF-7, and HEK293T cells prepared using NETN lysis buffer. *Antibody:* Rabbit anti-BLM recombinant monoclonal antibody [BLR312M] (A700-312 lot 1) used at 1:1000. *Secondary:* HRP-conjugated goat anti-rabbit IgG (A120-101P). *Detection:* Chemiluminescence with an exposure time of 75 seconds. Lower Panel: Rabbit anti-COPB2 antibody (A304-523A).



Detection of mouse BLM by western blot. *Samples:* Whole cell lysate (50 µg) from CT26, CH27, NIH 3T3, WEHI-231, and TCMK-1 cells prepared using NETN lysis buffer. *Antibody:* Rabbit anti-BLM recombinant monoclonal antibody [BLR312M] (A700-312 lot 1) used at 1:1000. *Secondary:* HRP-conjugated goat anti-rabbit IgG (A120-101P). *Detection:* Chemiluminescence with an exposure time of 75 seconds. Lower Panel: Rabbit anti-COPB2 antibody (A304-523A).