



SZABO SCANDIC

Part of Europa Biosite

Produktinformation



Forschungsprodukte & Biochemikalien



Zellkultur & Verbrauchsmaterial



Diagnostik & molekulare Diagnostik



Laborgeräte & Service

Weitere Information auf den folgenden Seiten!
See the following pages for more information!



Lieferung & Zahlungsart

siehe unsere [Liefer- und Versandbedingungen](#)

Zuschläge

- Mindermengenzuschlag
- Trockeneiszuschlag
- Gefahrgutzuschlag
- Expressversand

SZABO-SCANDIC HandelsgmbH

Quellenstraße 110, A-1100 Wien

T. +43(0)1 489 3961-0

F. +43(0)1 489 3961-7

mail@szabo-scandic.com

www.szabo-scandic.com

[linkedin.com/company/szaboscandic](https://www.linkedin.com/company/szaboscandic) 

BLM Recombinant Monoclonal Antibody [BLR313M]

Rabbit Recombinant Monoclonal

Purified		RefSeq ID	NP_000048.1
Catalog No.	A700-313	Uniprot ID	P54132
Lot No.	1	GeneID	641

APPLICATIONS	IHC, ICC
SPECIES REACTIVITY	Human, Mouse
AMOUNT	100 µl (50+ tests)
CONCENTRATION	1000 µg/ml
STORAGE/SHELF LIFE	2 – 8°C / 1 year from date of receipt
PHYSICAL STATE	Liquid
BUFFER	Phosphate Buffered Saline (PBS) with 0.09% Sodium Azide, BSA-Free
ISOTYPE	IgG
CLONE #	BLR313M
ORIGIN	USA
PRODUCTION PROCEDURES	Recombinant antibody was purified from cell culture supernatant.

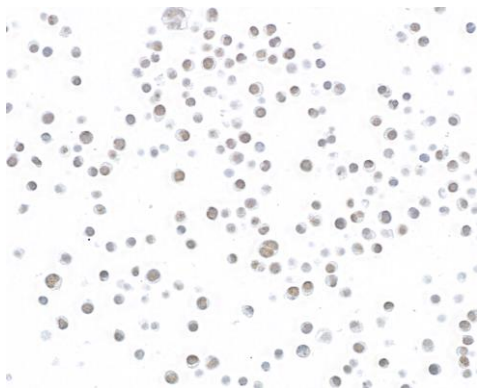
Immunogen was a peptide representing a region between residue 1367 and the C-terminus (residue 1417) of human RecQ-like DNA helicase BLM using the numbering given in entry NP_000048.1 (Gene ID 641).

APPLICATIONS	Centrifuge tube to remove product from lid. Optimal working dilutions should be determined experimentally by the investigator. Prepare working dilution immediately before use.
	Immunohistochemistry 1:100 to 1:500. Epitope retrieval using pressure cooker with citrate buffer pH 6.0 is recommended for FFPE cell sections.
	Immunocytochemistry 1:100 to 1:500. Epitope retrieval with citrate buffer pH 6.0 is recommended for FFPE cell sections.

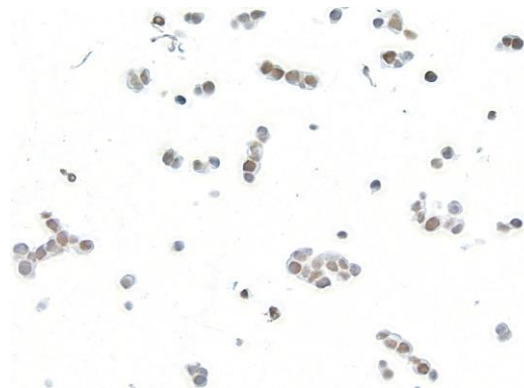
IHC HUMAN CONTROLS	Bladder Carcinoma, Colon Carcinoma, Head and Neck Squamous Cell Carcinoma, Ovarian Carcinoma, 22Rv1 Cells, A549 Cells, Cal-27 Cells, DU145 Cells, HEK293T Cells, Jurkat Cells, NCI-H526 Cells, SK-MEL-28 Cells
---------------------------	--

ADDITIONAL INFO	https://www.fortislife.com/p/A700-313 Use the link above to view SDS, a current list of citations, and other product specific information.
------------------------	---

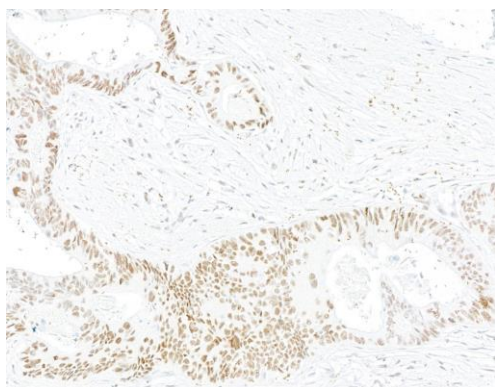
This document certifies that this product has met all of the quality control standards defined by Bethyl Laboratories, Inc.
Michael Spencer, PhD Date: February 27, 2024



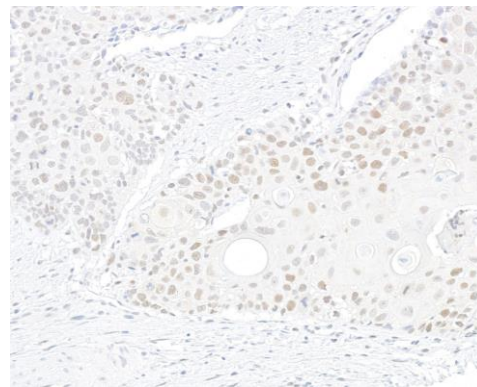
Detection of human BLM by immunocytochemistry.
Sample: FFPE section of Jurkat cells. *Antibody:* Rabbit anti-BLM recombinant monoclonal antibody [BLR313M] (A700-313). *Secondary:* HRP-conjugated goat anti-rabbit IgG (A120-501P).



Detection of human BLM by immunocytochemistry.
Sample: FFPE section of NCI-H526 cells. *Antibody:* Rabbit anti-BLM recombinant monoclonal antibody [BLR313M] (A700-313). *Secondary:* HRP-conjugated goat anti-rabbit IgG (A120-501P).



Detection of human BLM by immunohistochemistry.
Sample: FFPE section of colon carcinoma metastatic to lymph node. *Antibody:* Rabbit anti-BLM recombinant monoclonal antibody [BLR313M] (A700-313). *Detection:* Biocare Medical MACH 4 rabbit probe/HRP polymer.



Detection of human BLM by immunohistochemistry.
Sample: FFPE section of H&N SCC. *Antibody:* Rabbit anti-BLM recombinant monoclonal antibody [BLR313M] (A700-313). *Secondary:* HRP-conjugated goat anti-rabbit IgG (A120-501P).