



# SZABO SCANDIC

Part of Europa Biosite

## Produktinformation



Forschungsprodukte & Biochemikalien



Zellkultur & Verbrauchsmaterial



Diagnostik & molekulare Diagnostik



Laborgeräte & Service

Weitere Information auf den folgenden Seiten!  
See the following pages for more information!



### Lieferung & Zahlungsart

siehe unsere [Liefer- und Versandbedingungen](#)

### Zuschläge

- Mindermengenzuschlag
- Trockeneiszuschlag
- Gefahrgutzuschlag
- Expressversand

### SZABO-SCANDIC HandelsgmbH

Quellenstraße 110, A-1100 Wien

T. +43(0)1 489 3961-0

F. +43(0)1 489 3961-7

[mail@szabo-scandic.com](mailto:mail@szabo-scandic.com)

[www.szabo-scandic.com](http://www.szabo-scandic.com)

[linkedin.com/company/szaboscandic](https://www.linkedin.com/company/szaboscandic) 

# BAF57/SMARCE1 Recombinant Monoclonal Antibody [BLR316M]

Rabbit Recombinant Monoclonal

Purified		RefSeq ID	NP_003070.3
Catalog No.	A700-316	Uniprot ID	Q969G3
Lot No.	1	GeneID	6605

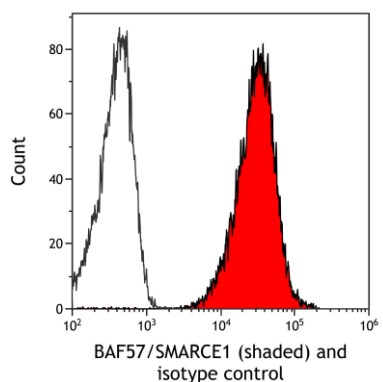
---

<b>APPLICATIONS</b>	WB, IP, IHC, ICC, Flow Cyt
<b>SPECIES REACTIVITY</b>	Human, Mouse
<b>AMOUNT</b>	100 µl (50+ tests)
<b>CONCENTRATION</b>	100 µg/ml
<b>STORAGE/SHELF LIFE</b>	2 – 8°C / 1 year from date of receipt
<b>PHYSICAL STATE</b>	Liquid
<b>BUFFER</b>	Phosphate Buffered Saline (PBS) with 0.1% BSA and 0.09% Sodium Azide
<b>ISOTYPE</b>	IgG
<b>CLONE #</b>	BLR316M
<b>ORIGIN</b>	USA
<b>PRODUCTION PROCEDURES</b>	Recombinant antibody was purified from cell culture supernatant.  Immunogen was a peptide representing a region between residue 361 and the C-terminus (residue 411) of human BAF57/SMARCE1 using the numbering given in entry NP_003070.3 (Gene ID 6605).
<b>APPLICATIONS</b>	Centrifuge tube to remove product from lid. Optimal working dilutions should be determined experimentally by the investigator. Prepare working dilution immediately before use.  Western Blot 1:1,000 Immunoprecipitation 20 µl/mg lysate Immunohistochemistry 1:100 to 1:500. Epitope retrieval with citrate buffer pH 6.0 is recommended for FFPE tissue sections. Immunocytochemistry 1:100 to 1:500. Epitope retrieval with citrate buffer pH 6.0 is recommended for FFPE cell sections. Flow Cytometry Fixed in 4% formaldehyde and permeabilized with 90% methanol. 1 µl per 1 × 10 <sup>6</sup> cells.
<b>APPLICATION NOTES</b>	All western blot analysis is performed using 5% Milk-TBST for blocking and as antibody diluent. Primary antibody is incubated overnight.  Western blots of cell lysates are performed using Goat anti-Rabbit IgG Heavy and Light Chain Antibody (Cat. No. A120-101P).  Western blots of immunoprecipitates are performed using Goat anti-Rabbit Light Chain HRP Conjugate (Cat. No. A120-113P) with 5% Normal Pig Serum (Cat. No. S100-020) added to the blocking buffer.
<b>IHC HUMAN CONTROLS</b>	Appendix, Breast Carcinoma, Colon Carcinoma, Hodgkin Lymphoma, Lymph Node, Prostate Carcinoma, Tonsil, Cal-27 Cells, LNCap Cells, NCI-H1155 Cells
<b>IHC MOUSE CONTROLS</b>	Liver, Spleen, Testis, A20 Cells, AML12 Cells
<b>ADDITIONAL INFO</b>	<a href="https://www.fortislife.com/p/A700-316">https://www.fortislife.com/p/A700-316</a> Use the link above to view SDS, a current list of citations, and other product specific information.

This document certifies that this product has met all of the quality control standards defined by Bethyl Laboratories, Inc.  
Michael Spencer, PhD Date: February 27, 2024

Phone: 800.338.9579 • Fax: 866.597.6105 • Web: [www.fortislife.com](http://www.fortislife.com)  
Orders: [orders@fortislife.com](mailto:orders@fortislife.com) • Support: [technical@fortislife.com](mailto:technical@fortislife.com)

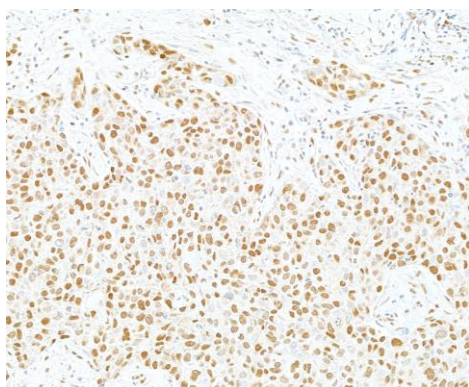
1



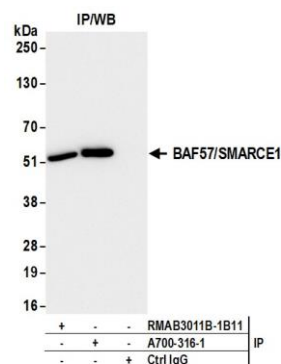
**Detection of human BAF57/SMARCE1 (shaded) in Jurkat cells by flow cytometry.** *Antibody:* Rabbit anti-BAF57/SMARCE1 recombinant monoclonal antibody [BLR316M] (A700-316) or isotype control (unshaded). *Secondary:* DyLight® 650-conjugated goat anti-rabbit IgG (A120-101D5).



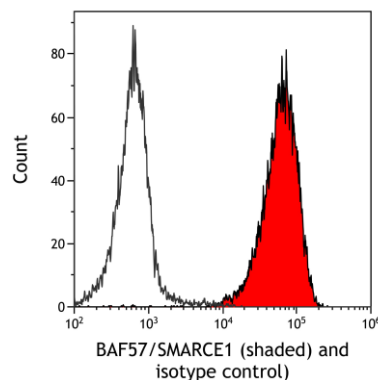
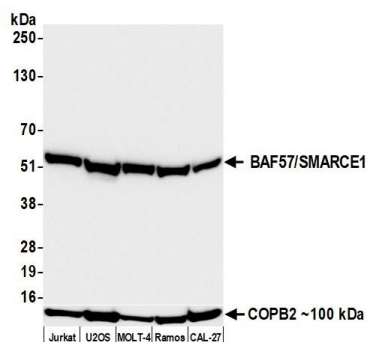
**Detection of human BAF57/SMARCE1 by immunocytochemistry.** *Sample:* FFPE section of LNCap cells. *Antibody:* Rabbit anti-BAF57/SMARCE1 recombinant monoclonal antibody [BLR316M] (A700-316). *Secondary:* HRP-conjugated goat anti-rabbit IgG (A120-501P).



**Detection of human BAF57/SMARCE1 by immunohistochemistry.** *Sample:* FFPE section of breast carcinoma. *Antibody:* Rabbit anti-BAF57/SMARCE1 recombinant monoclonal antibody [BLR316M] (A700-316). *Secondary:* HRP-conjugated goat anti-rabbit IgG (A120-501P).



**Detection of human BAF57/SMARCE1 by western blot of immunoprecipitates.** *Samples:* Whole cell lysate (1.0 mg per IP reaction; 20% of IP loaded) from Jurkat cells prepared using NETN lysis buffer. *Antibodies:* Rabbit anti-BAF57/SMARCE1 recombinant monoclonal antibody [BLR316M] (A700-316 lot 1) used for IP at 20 µl per reaction. BAF57/SMARCE1 was also immunoprecipitated by a second antibody against a different epitope of BAF57/SMARCE1 (RMA3011B-1B11). For blotting immunoprecipitated BAF57/SMARCE1, A700-316 was used at 1:1000. *Detection:* Chemiluminescence with an exposure time of 3 seconds.

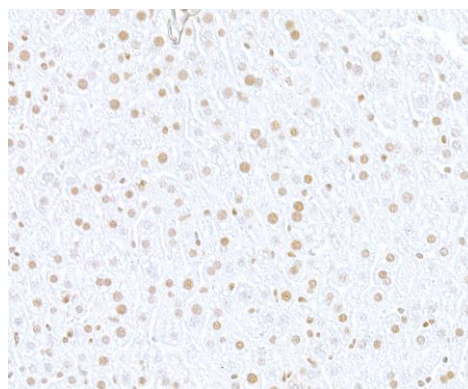


**Detection of human BAF57/SMARCE1 by western blot.**  
*Samples:* Whole cell lysate (50 µg) from Jurkat, U2OS, MOLT-4, Ramos, and CAL-27 cells prepared using NETN lysis buffer. *Antibody:* Rabbit anti-BAF57/SMARCE1 recombinant monoclonal antibody [BLR316M] (A700-316 lot 1) used at 1:1000. *Secondary:* HRP-conjugated goat anti-rabbit IgG (A120-101P). *Detection:* Chemiluminescence with an exposure time of 3 seconds. Lower Panel: Rabbit anti-COPB2 antibody (A304-523A).

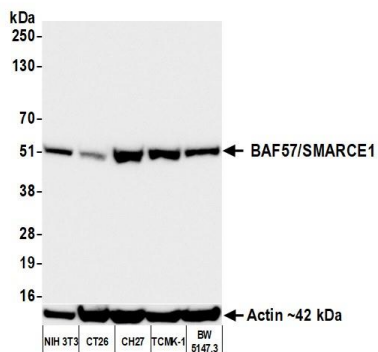
**Detection of mouse BAF57/SMARCE1 (shaded) in EL4 cells by flow cytometry.** *Antibody:* Rabbit anti-BAF57/SMARCE1 recombinant monoclonal antibody [BLR316M] (A700-316) or isotype control (unshaded). *Secondary:* DyLight® 650-conjugated goat anti-rabbit IgG (A120-101D5).



**Detection of mouse BAF57/SMARCE1 by immunohistochemistry.** *Sample:* FFPE section of AML12 cells. *Antibody:* Rabbit anti-BAF57/SMARCE1 recombinant monoclonal antibody [BLR316M] (A700-316). *Secondary:* HRP-conjugated goat anti-rabbit IgG (A120-501P).



**Detection of mouse BAF57/SMARCE1 by immunohistochemistry.** *Sample:* FFPE section of mouse liver. *Antibody:* Rabbit anti-BAF57/SMARCE1 recombinant monoclonal antibody [BLR316M] (A700-316). *Secondary:* HRP-conjugated goat anti-rabbit IgG (A120-501P).



**Detection of mouse BAF57/SMARCE1 by western blot.**

*Samples:* Whole cell lysate (50 µg) from NIH 3T3, CT26, CH27, TCMK-1, and BW5147.3 cells prepared using NETN lysis buffer. *Antibody:* Rabbit anti-BAF57/SMARCE1 recombinant monoclonal antibody [BLR316M] (A700-316 lot 1) used at 1:1000. *Secondary:* HRP-conjugated goat anti-rabbit IgG (A120-101P). *Detection:* Chemiluminescence with an exposure time of 3 seconds. Lower Panel: Rabbit anti-Actin recombinant monoclonal antibody [BLR057F] (A700-057).