



SZABO SCANDIC

Part of Europa Biosite

Produktinformation



Forschungsprodukte & Biochemikalien



Zellkultur & Verbrauchsmaterial



Diagnostik & molekulare Diagnostik



Laborgeräte & Service

Weitere Information auf den folgenden Seiten!
See the following pages for more information!



Lieferung & Zahlungsart

siehe unsere [Liefer- und Versandbedingungen](#)

Zuschläge

- Mindermengenzuschlag
- Trockeneiszuschlag
- Gefahrgutzuschlag
- Expressversand

SZABO-SCANDIC HandelsgmbH

Quellenstraße 110, A-1100 Wien

T. +43(0)1 489 3961-0

F. +43(0)1 489 3961-7

mail@szabo-scandic.com

www.szabo-scandic.com

[linkedin.com/company/szaboscandic](https://www.linkedin.com/company/szaboscandic) 

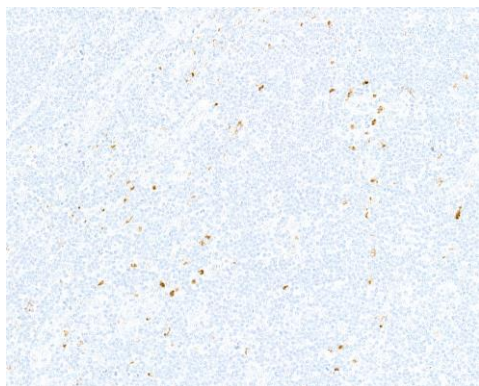
IL-10 Recombinant Monoclonal Antibody [BLR317M]

Rabbit Recombinant Monoclonal

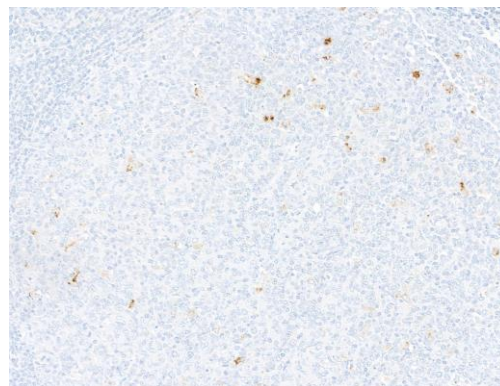
Purified		RefSeq ID	NP_000563.1
Catalog No.	A700-317	Uniprot ID	P22301
Lot No.	1	GeneID	3586

APPLICATIONS	WB, IP, IHC
SPECIES REACTIVITY	Human
AMOUNT	100 µl (50+ tests)
CONCENTRATION	1000 µg/ml
STORAGE/SHELF LIFE	2 – 8°C / 1 year from date of receipt
PHYSICAL STATE	Liquid
BUFFER	Phosphate Buffered Saline (PBS) with 0.09% Sodium Azide, BSA-Free
ISOTYPE	IgG
CLONE #	BLR317M
ORIGIN	USA
PRODUCTION PROCEDURES	Recombinant antibody was purified from cell culture supernatant. Immunogen was a recombinant protein representing human IL-10 (residues 19–178, NP_000563.1).
APPLICATIONS	Centrifuge tube to remove product from lid. Optimal working dilutions should be determined experimentally by the investigator. Prepare working dilution immediately before use. Western Blot 1:1,000 Immunoprecipitation 6 µl/mg lysate Immunohistochemistry 1:100 to 1:500. Epitope retrieval with citrate buffer pH 6.0 is recommended for FFPE tissue sections.
APPLICATION NOTES	All western blot analysis is performed using 5% Milk-TBST for blocking and as antibody diluent. Primary antibody is incubated overnight. Western blots of cell lysates are performed using Goat anti-Rabbit IgG Heavy and Light Chain Antibody (Cat. No. A120-101P). Western blots of immunoprecipitates are performed using Goat anti-Rabbit Light Chain HRP Conjugate (Cat. No. A120-113P) with 5% Normal Pig Serum (Cat. No. S100-020) added to the blocking buffer.
IHC HUMAN CONTROLS	Appendix, Hodgkin Lymphoma, Lymph Node, Tonsil
ADDITIONAL INFO	https://www.fortislife.com/p/A700-317 Use the link above to view SDS, a current list of citations, and other product specific information.

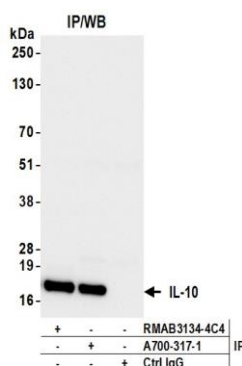
This document certifies that this product has met all of the quality control standards defined by Bethyl Laboratories, Inc.
Michael Spencer, PhD Date: February 27, 2024



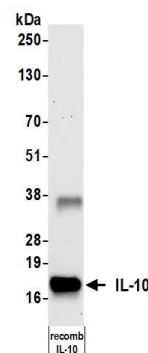
Detection of human IL-10 by immunohistochemistry.
Sample: FFPE section of lymph node. *Antibody:* Rabbit anti-IL-10 recombinant monoclonal antibody [BLR317M] (A700-317). *Secondary:* HRP-conjugated goat anti-rabbit IgG (A120-501P).



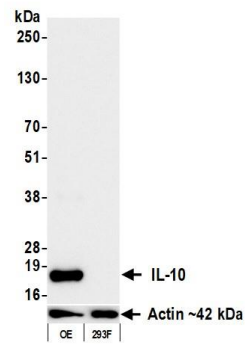
Detection of human IL-10 by immunohistochemistry.
Sample: FFPE section of tonsil. *Antibody:* Rabbit anti-IL-10 recombinant monoclonal antibody [BLR317M] (A700-317). *Secondary:* HRP-conjugated goat anti-rabbit IgG (A120-501P).



Detection of human IL-10 by western blot of immunoprecipitates. *Samples:* Whole cell lysate (1.0 mg per IP reaction; 20% of IP loaded) from 293T cells overexpressing IL-10. *Antibodies:* Rabbit anti-IL-10 recombinant monoclonal antibody [BLR317M] (A700-317 lot 1) used for IP at 6 µl per reaction. IL-10 was also immunoprecipitated by a second antibody against a different epitope of IL-10 (RMAB3134-4C4). For blotting immunoprecipitated IL-10, A700-317 was used at 1:1000. *Detection:* Chemiluminescence with an exposure time of 3 seconds.



Detection of human IL-10 by western blot. *Samples:* 0.01ug of Recombinant IL-10 protein. *Antibody:* Rabbit anti-IL-10 recombinant monoclonal antibody [BLR317M] (A700-317 lot 1) used at 1:1000. *Secondary:* HRP-conjugated goat anti-rabbit IgG (A120-101P). *Detection:* Chemiluminescence with an exposure time of 3 seconds.



Detection of human IL-10 by western blot. *Samples:* Whole cell lysate (50 µg) from 293F cells and 293F cells overexpressing IL-10. *Antibody:* Rabbit anti-IL-10 recombinant monoclonal antibody [BLR317M] (A700-317 lot 1) used at 1:1000. *Secondary:* HRP-conjugated goat anti-rabbit IgG (A120-101P). *Detection:* Chemiluminescence with an exposure time of 3 seconds. Lower Panel: Rabbit anti-Actin recombinant monoclonal antibody [BLR057F] (A700-057).