



# SZABO SCANDIC

Part of Europa Biosite

## Produktinformation



Forschungsprodukte & Biochemikalien



Zellkultur & Verbrauchsmaterial



Diagnostik & molekulare Diagnostik



Laborgeräte & Service

Weitere Information auf den folgenden Seiten!  
See the following pages for more information!



### Lieferung & Zahlungsart

siehe unsere [Liefer- und Versandbedingungen](#)

### Zuschläge

- Mindermengenzuschlag
- Trockeneiszuschlag
- Gefahrgutzuschlag
- Expressversand

### SZABO-SCANDIC HandelsgmbH

Quellenstraße 110, A-1100 Wien

T. +43(0)1 489 3961-0

F. +43(0)1 489 3961-7

[mail@szabo-scandic.com](mailto:mail@szabo-scandic.com)

[www.szabo-scandic.com](http://www.szabo-scandic.com)

[linkedin.com/company/szaboscandic](https://www.linkedin.com/company/szaboscandic) 

# CD22 Recombinant Monoclonal Antibody [BLR320M]

Rabbit Recombinant Monoclonal

Purified		RefSeq ID	NP_001036782.1
Catalog No.	A700-320-T	Uniprot ID	P35329
Lot No.	1	GeneID	12483

---

<b>APPLICATIONS</b>	WB, IP, IHC
<b>SPECIES REACTIVITY</b>	Mouse
<b>AMOUNT</b>	10 µl (5+ tests)
<b>CONCENTRATION</b>	1000 µg/ml
<b>STORAGE/SHELF LIFE</b>	2 - 8°C / 1 year from date of receipt
<b>PHYSICAL STATE</b>	Liquid
<b>BUFFER</b>	Phosphate Buffered Saline (PBS) with 0.09% Sodium Azide, BSA-Free
<b>ISOTYPE</b>	IgG
<b>CLONE #</b>	BLR320M
<b>ORIGIN</b>	USA
<b>PRODUCTION PROCEDURES</b>	Recombinant antibody was purified from cell culture supernatant.

Immunogen was a peptide representing a region between residue 750 and 800 of mouse B-cell receptor CD22 using the numbering given in entry NP\_001036782.1 (Gene ID 12483).

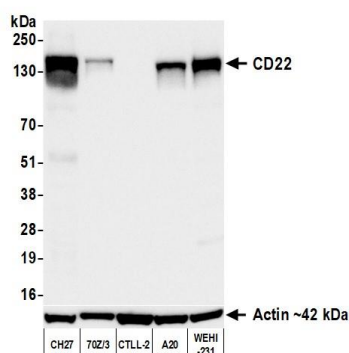
<b>APPLICATIONS</b>	Centrifuge tube to remove product from lid. Optimal working dilutions should be determined experimentally by the investigator. Prepare working dilution immediately before use.
	Western Blot 1:1,000
	Immunoprecipitation 6 µl/mg lysate
	Immunohistochemistry 1:100 to 1:500. Epitope retrieval with citrate buffer pH 6.0 is recommended for FFPE tissue sections.

<b>APPLICATION NOTES</b>	All western blot analysis is performed using 5% Milk-TBST for blocking and as antibody diluent. Primary antibody is incubated overnight.
	Western blots of cell lysates are performed using Goat anti-Rabbit IgG Heavy and Light Chain Antibody (A120-101P).

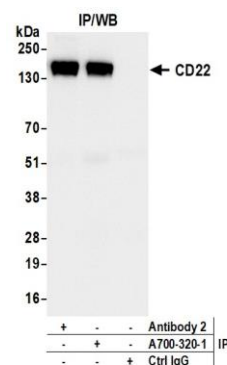
Western blots of immunoprecipitates are performed using Goat anti-Rabbit Light Chain HRP Conjugate (A120-113P) with 5% Normal Pig Serum (S100-020) added to the blocking buffer.

<b>ADDITIONAL INFO</b>	<a href="https://www.fortislife.com/p/A700-320-T">https://www.fortislife.com/p/A700-320-T</a> Use the link above to view SDS, a current list of citations, and other product specific information.
------------------------	---

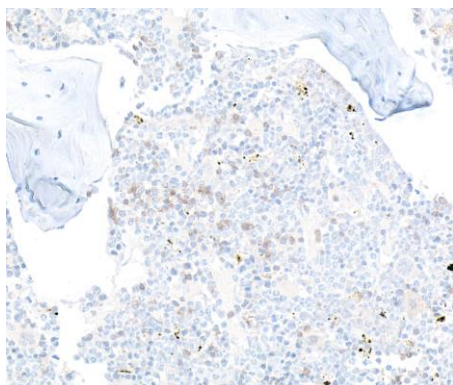
This document certifies that this product has met all of the quality control standards defined by Bethyl Laboratories, Inc.  
Michael Spencer, PhD Date: June 25, 2024



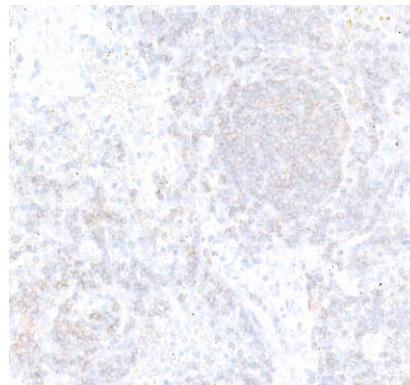
**Detection of mouse CD22 by western blot.** *Samples:* Whole cell lysate (25  $\mu$ g) from CH27, 70Z/3, CTLL-2, A20, and WEHI-231 cells prepared using NETN lysis buffer. *Antibody:* Rabbit anti-CD22 recombinant monoclonal antibody [BLR320M] (A700-320 lot 1) used at 1:1000. *Secondary:* HRP-conjugated goat anti-rabbit IgG (A120-101P). *Detection:* Chemiluminescence with an exposure time of 3 seconds.



**Detection of mouse CD22 by western blot of immunoprecipitates.** *Samples:* Whole cell lysate (1.0 mg per IP reaction; 20% of IP loaded) from CH27 cells prepared using NETN lysis buffer. *Antibodies:* Rabbit anti-CD22 recombinant monoclonal antibody [BLR320M] (A700-320 lot 1) used for IP at 6  $\mu$ l per reaction. CD22 was also immunoprecipitated by a second antibody against a different epitope of mouse CD22 (Antibody 2). For blotting immunoprecipitated CD22, A700-320 was used at 1:1000. *Detection:* Chemiluminescence with an exposure time of 3 seconds.



**Detection of mouse CD22 by immunohistochemistry.** *Sample:* FFPE section of mouse bone marrow. *Antibody:* Rabbit anti-CD22 recombinant monoclonal antibody [BLR320M] (A700-320). *Secondary:* HRP-conjugated goat anti-rabbit IgG (A120-501P).



**Detection of mouse CD22 by immunohistochemistry.** *Sample:* FFPE section of mouse spleen. *Antibody:* Rabbit anti-CD22 recombinant monoclonal antibody [BLR320M] (A700-320). *Secondary:* HRP-conjugated goat anti-rabbit IgG (A120-501P).