



# SZABO SCANDIC

Part of Europa Biosite

## Produktinformation



Forschungsprodukte & Biochemikalien



Zellkultur & Verbrauchsmaterial



Diagnostik & molekulare Diagnostik



Laborgeräte & Service

Weitere Information auf den folgenden Seiten!  
See the following pages for more information!



### Lieferung & Zahlungsart

siehe unsere [Liefer- und Versandbedingungen](#)

### Zuschläge

- Mindermengenzuschlag
- Trockeneiszuschlag
- Gefahrgutzuschlag
- Expressversand

### SZABO-SCANDIC HandelsgmbH

Quellenstraße 110, A-1100 Wien

T. +43(0)1 489 3961-0

F. +43(0)1 489 3961-7

[mail@szabo-scandic.com](mailto:mail@szabo-scandic.com)

[www.szabo-scandic.com](http://www.szabo-scandic.com)

[linkedin.com/company/szaboscandic](https://www.linkedin.com/company/szaboscandic) 

# CD22 Recombinant Monoclonal Antibody [BLR320M]

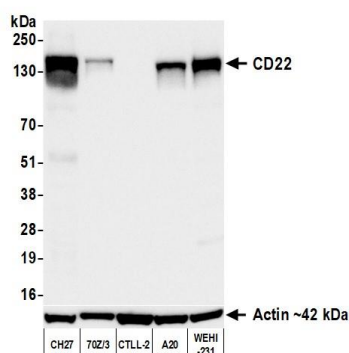
Rabbit Recombinant Monoclonal

Purified		RefSeq ID	NP_001036782.1
Catalog No.	A700-320	Uniprot ID	P35329
Lot No.	1	GeneID	12483

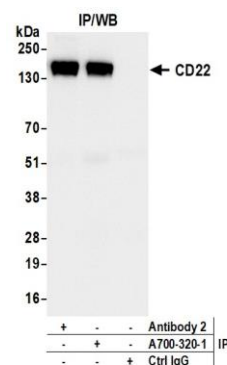
---

<b>APPLICATIONS</b>	WB, IP, IHC
<b>SPECIES REACTIVITY</b>	Mouse
<b>AMOUNT</b>	100 µl (50+ tests)
<b>CONCENTRATION</b>	1000 µg/ml
<b>STORAGE/SHELF LIFE</b>	2 – 8°C / 1 year from date of receipt
<b>PHYSICAL STATE</b>	Liquid
<b>BUFFER</b>	Phosphate Buffered Saline (PBS) with 0.09% Sodium Azide, BSA-Free
<b>ISOTYPE</b>	IgG
<b>CLONE #</b>	BLR320M
<b>ORIGIN</b>	USA
<b>PRODUCTION PROCEDURES</b>	Recombinant antibody was purified from cell culture supernatant.  Immunogen was a peptide representing a region between residue 750 and 800 of mouse B-cell receptor CD22 using the numbering given in entry NP_001036782.1 (Gene ID 12483).
<b>APPLICATIONS</b>	Centrifuge tube to remove product from lid. Optimal working dilutions should be determined experimentally by the investigator. Prepare working dilution immediately before use.  Western Blot                      1:1,000 Immunoprecipitation          6 µl/mg lysate Immunohistochemistry        1:100 to 1:500. Epitope retrieval with citrate buffer pH 6.0 is recommended for FFPE tissue sections.
<b>APPLICATION NOTES</b>	All western blot analysis is performed using 5% Milk-TBST for blocking and as antibody diluent. Primary antibody is incubated overnight.  Western blots of cell lysates are performed using Goat anti-Rabbit IgG Heavy and Light Chain Antibody (A120-101P).  Western blots of immunoprecipitates are performed using Goat anti-Rabbit Light Chain HRP Conjugate (A120-113P) with 5% Normal Pig Serum (S100-020) added to the blocking buffer.
<b>ADDITIONAL INFO</b>	<a href="https://www.fortislifesciences.com/p/A700-320">https://www.fortislifesciences.com/p/A700-320</a> Use the link above to view SDS, a current list of citations, and other product specific information.

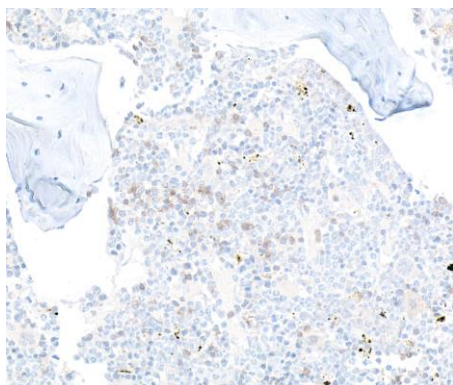
This document certifies that this product has met all of the quality control standards defined by Bethyl Laboratories, Inc.  
Michael Spencer, PhD Date: June 25, 2024



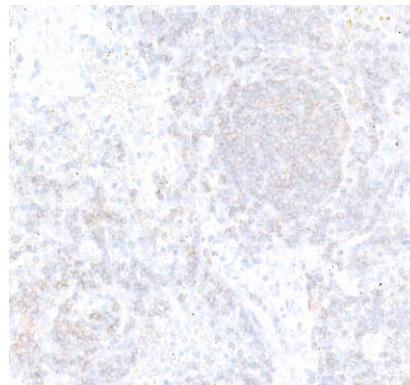
**Detection of mouse CD22 by western blot.** *Samples:* Whole cell lysate (25 µg) from CH27, 70Z/3, CTLL-2, A20, and WEHI-231 cells prepared using NETN lysis buffer. *Antibody:* Rabbit anti-CD22 recombinant monoclonal antibody [BLR320M] (A700-320 lot 1) used at 1:1000. *Secondary:* HRP-conjugated goat anti-rabbit IgG (A120-101P). *Detection:* Chemiluminescence with an exposure time of 3 seconds.



**Detection of mouse CD22 by western blot of immunoprecipitates.** *Samples:* Whole cell lysate (1.0 mg per IP reaction; 20% of IP loaded) from CH27 cells prepared using NETN lysis buffer. *Antibodies:* Rabbit anti-CD22 recombinant monoclonal antibody [BLR320M] (A700-320 lot 1) used for IP at 6 µl per reaction. CD22 was also immunoprecipitated by a second antibody against a different epitope of mouse CD22 (Antibody 2). For blotting immunoprecipitated CD22, A700-320 was used at 1:1000. *Detection:* Chemiluminescence with an exposure time of 3 seconds.



**Detection of mouse CD22 by immunohistochemistry.** *Sample:* FFPE section of mouse bone marrow. *Antibody:* Rabbit anti-CD22 recombinant monoclonal antibody [BLR320M] (A700-320). *Secondary:* HRP-conjugated goat anti-rabbit IgG (A120-501P).



**Detection of mouse CD22 by immunohistochemistry.** *Sample:* FFPE section of mouse spleen. *Antibody:* Rabbit anti-CD22 recombinant monoclonal antibody [BLR320M] (A700-320). *Secondary:* HRP-conjugated goat anti-rabbit IgG (A120-501P).