



SZABO SCANDIC

Part of Europa Biosite

Produktinformation



Forschungsprodukte & Biochemikalien



Zellkultur & Verbrauchsmaterial



Diagnostik & molekulare Diagnostik



Laborgeräte & Service

Weitere Information auf den folgenden Seiten!
See the following pages for more information!



Lieferung & Zahlungsart

siehe unsere [Liefer- und Versandbedingungen](#)

Zuschläge

- Mindermengenzuschlag
- Trockeneiszuschlag
- Gefahrgutzuschlag
- Expressversand

SZABO-SCANDIC HandelsgmbH

Quellenstraße 110, A-1100 Wien

T. +43(0)1 489 3961-0

F. +43(0)1 489 3961-7

mail@szabo-scandic.com

www.szabo-scandic.com

[linkedin.com/company/szaboscandic](https://www.linkedin.com/company/szaboscandic) 

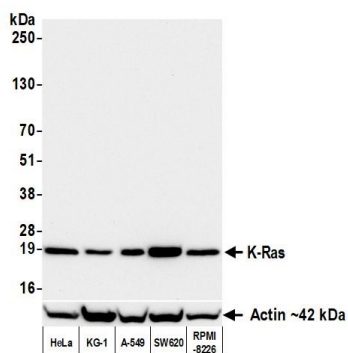
K-Ras Recombinant Monoclonal Antibody [BLR321M]

Rabbit Recombinant Monoclonal

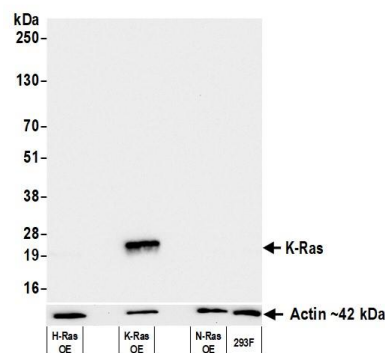
Purified		RefSeq ID	NP_004976.2
Catalog No.	A700-321-T	Uniprot ID	P01116
Lot No.	1	GeneID	3845

APPLICATIONS	WB, Flow Cyt
SPECIES REACTIVITY	Human, Mouse
AMOUNT	20 µl (2 blots)
CONCENTRATION	1000 µg/ml
STORAGE/SHELF LIFE	2 - 8°C / 1 year from date of receipt
PHYSICAL STATE	Liquid
BUFFER	Phosphate Buffered Saline (PBS) with 0.09% Sodium Azide, BSA-Free
ISOTYPE	IgG
CLONE #	BLR321M
ORIGIN	USA
PRODUCTION PROCEDURES	Recombinant antibody was purified from cell culture supernatant. Immunogen was a peptide representing a region between residue 50 and 100 of human GTPase K-Ras using the numbering given in entry NP_004976.2 (Gene ID 3845).
APPLICATIONS	Centrifuge tube to remove product from lid. Optimal working dilutions should be determined experimentally by the investigator. Prepare working dilution immediately before use. Western Blot 1:1,000 Flow Cytometry Fixed in 4% formaldehyde and permeabilized with 90% methanol. 1 µl per 1 × 10 ⁶ cells.
APPLICATION NOTES	All western blot analysis is performed using 5% Milk-TBST for blocking and as antibody diluent. Primary antibody is incubated overnight. Western blots of cell lysates are performed using Goat anti-Rabbit IgG Heavy and Light Chain Antibody (A120-101P).
ADDITIONAL INFO	https://www.fortislife.com/p/A700-321-T Use the link above to view SDS, a current list of citations, and other product specific information.

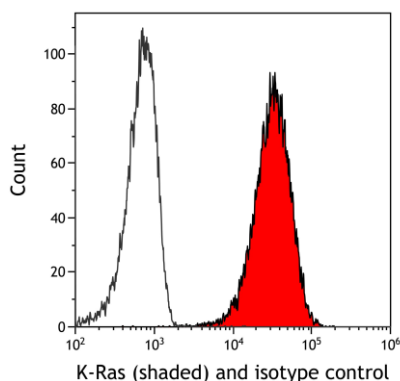
This document certifies that this product has met all of the quality control standards defined by Bethyl Laboratories, Inc.
Michael Spencer, PhD Date: June 25, 2024



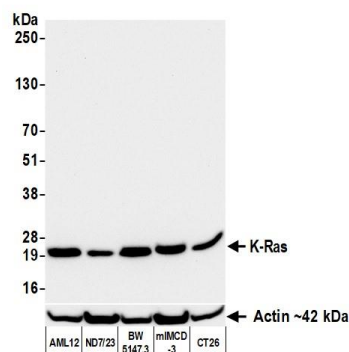
Detection of human K-Ras by western blot. *Samples:* Whole cell lysate (50 µg) from HeLa, KG-1, A-549, SW620, and RPMI-8226 cells prepared using NETN lysis buffer. *Antibody:* Rabbit anti-K-Ras recombinant monoclonal antibody [BLR321M] (A700-321 lot 1) used at 1:1000. *Secondary:* HRP-conjugated goat anti-rabbit IgG (A120-101P). *Detection:* Chemiluminescence with an exposure time of 30 seconds. Lower Panel: Rabbit anti-Actin recombinant monoclonal antibody [BLR057F] (A700-057).



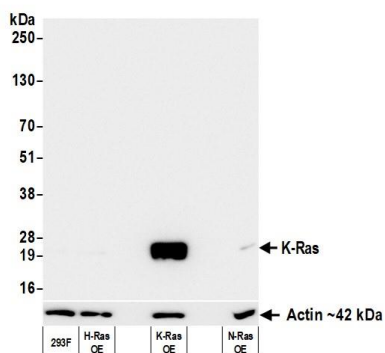
Detection of human K-Ras by western blot. *Samples:* Whole cell lysate (5 µg) from 293F cells overexpressing human H-Ras, K-Ras, or N-Ras. *Antibody:* Rabbit anti-K-Ras recombinant monoclonal antibody [BLR321M] (A700-321 lot 1) used at 1:1000. *Secondary:* HRP-conjugated goat anti-rabbit IgG (A120-101P). *Detection:* Chemiluminescence with an exposure time of 3 seconds. Lower Panel: Rabbit anti-Actin recombinant monoclonal antibody [BLR057F] (A700-057).



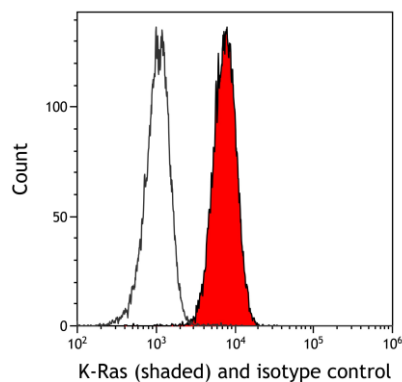
Detection of human K-Ras (shaded) in HeLa cells by flow cytometry. *Antibody:* Rabbit anti-K-Ras recombinant monoclonal antibody [BLR321M] (A700-321) or isotype control (unshaded). *Secondary:* DyLight® 650-conjugated goat anti-rabbit IgG (A120-101D5).



Detection of mouse K-Ras by western blot. *Samples:* Whole cell lysate (50 µg) from AML12, ND7/23, BW5147.3, mIMCD-3, and CT26 cells prepared using NETN lysis buffer. *Antibody:* Rabbit anti-K-Ras recombinant monoclonal antibody [BLR321M] (A700-321 lot 1) used at 1:1000. *Secondary:* HRP-conjugated goat anti-rabbit IgG (A120-101P). *Detection:* Chemiluminescence with an exposure time of 30 seconds. Lower Panel: Rabbit anti-Actin recombinant monoclonal antibody [BLR057F] (A700-057).



Detection of mouse K-Ras by western blot. *Samples:* Whole cell lysate (50 μ g) from 293F cells overexpressing mouse H-Ras, K-Ras, or N-Ras. *Antibody:* Rabbit anti-K-Ras recombinant monoclonal antibody [BLR321M] (A700-321 lot 1) used at 1:1000. *Secondary:* HRP-conjugated goat anti-rabbit IgG (A120-101P). *Detection:* Chemiluminescence with an exposure time of 3 seconds. Lower Panel: Rabbit anti-Actin recombinant monoclonal antibody [BLR057F] (A700-057).



Detection of mouse K-Ras (shaded) in A20 cells by flow cytometry. *Antibody:* Rabbit anti-K-Ras recombinant monoclonal antibody [BLR321M] (A700-321) or isotype control (unshaded). *Secondary:* DyLight[®] 650-conjugated goat anti-rabbit IgG (A120-101D5).