



# SZABO SCANDIC

Part of Europa Biosite

## Produktinformation



Forschungsprodukte & Biochemikalien



Zellkultur & Verbrauchsmaterial



Diagnostik & molekulare Diagnostik



Laborgeräte & Service

Weitere Information auf den folgenden Seiten!  
See the following pages for more information!



### Lieferung & Zahlungsart

siehe unsere [Liefer- und Versandbedingungen](#)

### Zuschläge

- Mindermengenzuschlag
- Trockeneiszuschlag
- Gefahrgutzuschlag
- Expressversand

### SZABO-SCANDIC HandelsgmbH

Quellenstraße 110, A-1100 Wien

T. +43(0)1 489 3961-0

F. +43(0)1 489 3961-7

[mail@szabo-scandic.com](mailto:mail@szabo-scandic.com)

[www.szabo-scandic.com](http://www.szabo-scandic.com)

[linkedin.com/company/szaboscandic](https://www.linkedin.com/company/szaboscandic) 

# K-Ras Recombinant Monoclonal Antibody [BLR321M]

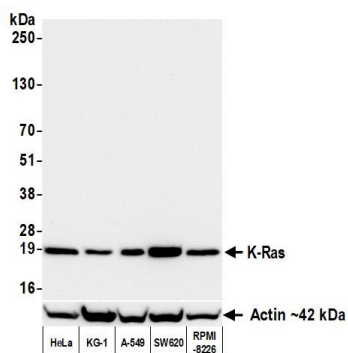
Rabbit Recombinant Monoclonal

Purified		RefSeq ID	NP_004976.2
Catalog No.	A700-321	Uniprot ID	P01116
Lot No.	1	GeneID	3845

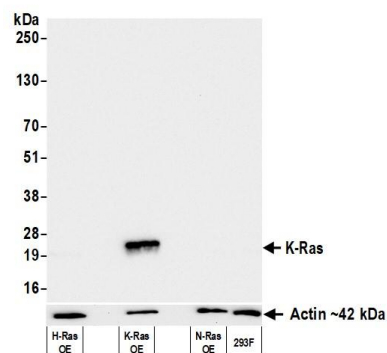
---

<b>APPLICATIONS</b>	WB, Flow Cyt
<b>SPECIES REACTIVITY</b>	Human, Mouse
<b>AMOUNT</b>	100 µl (10 blots)
<b>CONCENTRATION</b>	1000 µg/ml
<b>STORAGE/SHELF LIFE</b>	2 – 8°C / 1 year from date of receipt
<b>PHYSICAL STATE</b>	Liquid
<b>BUFFER</b>	Phosphate Buffered Saline (PBS) with 0.09% Sodium Azide, BSA-Free
<b>ISOTYPE</b>	IgG
<b>CLONE #</b>	BLR321M
<b>ORIGIN</b>	USA
<b>PRODUCTION PROCEDURES</b>	Recombinant antibody was purified from cell culture supernatant.  Immunogen was a peptide representing a region between residue 50 and 100 of human GTPase K-Ras using the numbering given in entry NP_004976.2 (Gene ID 3845).
<b>APPLICATIONS</b>	Centrifuge tube to remove product from lid. Optimal working dilutions should be determined experimentally by the investigator. Prepare working dilution immediately before use.  Western Blot                      1:1,000 Flow Cytometry                  Fixed in 4% formaldehyde and permeabilized with 90% methanol. 1 µl per 1 × 10 <sup>6</sup> cells.
<b>APPLICATION NOTES</b>	All western blot analysis is performed using 5% Milk-TBST for blocking and as antibody diluent. Primary antibody is incubated overnight.  Western blots of cell lysates are performed using Goat anti-Rabbit IgG Heavy and Light Chain Antibody (A120-101P).
<b>ADDITIONAL INFO</b>	<a href="https://www.fortislife.com/p/A700-321">https://www.fortislife.com/p/A700-321</a> Use the link above to view SDS, a current list of citations, and other product specific information.

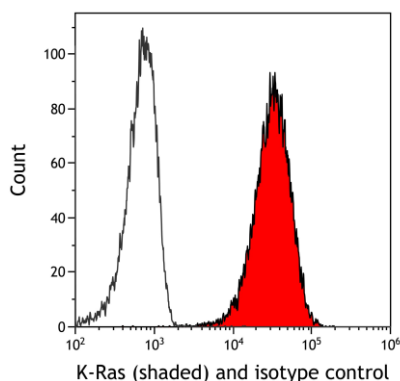
This document certifies that this product has met all of the quality control standards defined by Bethyl Laboratories, Inc.  
Michael Spencer, PhD Date: June 25, 2024



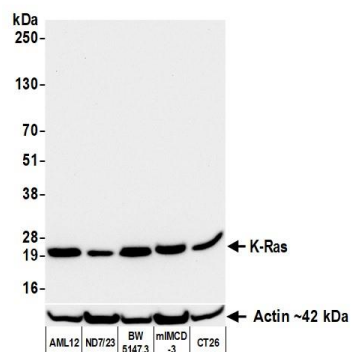
**Detection of human K-Ras by western blot.** *Samples:* Whole cell lysate (50 µg) from HeLa, KG-1, A-549, SW620, and RPMI-8226 cells prepared using NETN lysis buffer. *Antibody:* Rabbit anti-K-Ras recombinant monoclonal antibody [BLR321M] (A700-321 lot 1) used at 1:1000. *Secondary:* HRP-conjugated goat anti-rabbit IgG (A120-101P). *Detection:* Chemiluminescence with an exposure time of 30 seconds. Lower Panel: Rabbit anti-Actin recombinant monoclonal antibody [BLR057F] (A700-057).



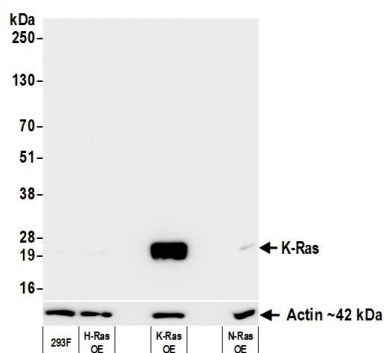
**Detection of human K-Ras by western blot.** *Samples:* Whole cell lysate (5 µg) from 293F cells overexpressing human H-Ras, K-Ras, or N-Ras. *Antibody:* Rabbit anti-K-Ras recombinant monoclonal antibody [BLR321M] (A700-321 lot 1) used at 1:1000. *Secondary:* HRP-conjugated goat anti-rabbit IgG (A120-101P). *Detection:* Chemiluminescence with an exposure time of 3 seconds. Lower Panel: Rabbit anti-Actin recombinant monoclonal antibody [BLR057F] (A700-057).



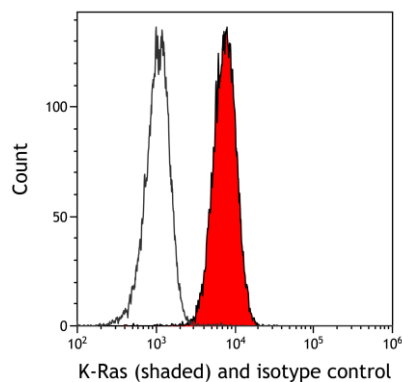
**Detection of human K-Ras (shaded) in HeLa cells by flow cytometry.** *Antibody:* Rabbit anti-K-Ras recombinant monoclonal antibody [BLR321M] (A700-321) or isotype control (unshaded). *Secondary:* DyLight® 650-conjugated goat anti-rabbit IgG (A120-101D5).



**Detection of mouse K-Ras by western blot.** *Samples:* Whole cell lysate (50 µg) from AML12, ND7/23, BW5147.3, mIMCD-3, and CT26 cells prepared using NETN lysis buffer. *Antibody:* Rabbit anti-K-Ras recombinant monoclonal antibody [BLR321M] (A700-321 lot 1) used at 1:1000. *Secondary:* HRP-conjugated goat anti-rabbit IgG (A120-101P). *Detection:* Chemiluminescence with an exposure time of 30 seconds. Lower Panel: Rabbit anti-Actin recombinant monoclonal antibody [BLR057F] (A700-057).



**Detection of mouse K-Ras by western blot.** *Samples:* Whole cell lysate (50  $\mu$ g) from 293F cells overexpressing mouse H-Ras, K-Ras, or N-Ras. *Antibody:* Rabbit anti-K-Ras recombinant monoclonal antibody [BLR321M] (A700-321 lot 1) used at 1:1000. *Secondary:* HRP-conjugated goat anti-rabbit IgG (A120-101P). *Detection:* Chemiluminescence with an exposure time of 3 seconds. Lower Panel: Rabbit anti-Actin recombinant monoclonal antibody [BLR057F] (A700-057).



**Detection of mouse K-Ras (shaded) in A20 cells by flow cytometry.** *Antibody:* Rabbit anti-K-Ras recombinant monoclonal antibody [BLR321M] (A700-321) or isotype control (unshaded). *Secondary:* DyLight<sup>®</sup> 650-conjugated goat anti-rabbit IgG (A120-101D5).