



SZABO SCANDIC

Part of Europa Biosite

Produktinformation



Forschungsprodukte & Biochemikalien



Zellkultur & Verbrauchsmaterial



Diagnostik & molekulare Diagnostik



Laborgeräte & Service

Weitere Information auf den folgenden Seiten!
See the following pages for more information!



Lieferung & Zahlungsart

siehe unsere [Liefer- und Versandbedingungen](#)

Zuschläge

- Mindermengenzuschlag
- Trockeneiszuschlag
- Gefahrgutzuschlag
- Expressversand

SZABO-SCANDIC HandelsgmbH

Quellenstraße 110, A-1100 Wien

T. +43(0)1 489 3961-0

F. +43(0)1 489 3961-7

mail@szabo-scandic.com

www.szabo-scandic.com

[linkedin.com/company/szaboscandic](https://www.linkedin.com/company/szaboscandic) 

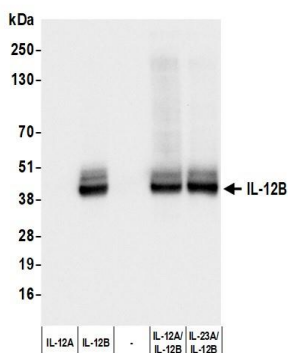
IL-12B Recombinant Monoclonal Antibody [BLR322M]

Rabbit Recombinant Monoclonal

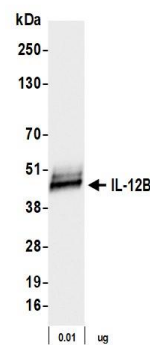
Purified		RefSeq ID	NP_002178.2
Catalog No.	A700-322-T	Uniprot ID	P29460
Lot No.	1	GeneID	3593

APPLICATIONS	WB, IP
SPECIES REACTIVITY	Human
AMOUNT	20 µl (2 blots)
CONCENTRATION	1000 µg/ml
STORAGE/SHELF LIFE	2 - 8°C / 1 year from date of receipt
PHYSICAL STATE	Liquid
BUFFER	Phosphate Buffered Saline (PBS) with 0.09% Sodium Azide, BSA-Free
ISOTYPE	IgG
CLONE #	BLR322M
ORIGIN	USA
PRODUCTION PROCEDURES	Recombinant antibody was purified from cell culture supernatant. Immunogen was a recombinant protein representing human IL-12B (residues 23-328, NP_002178.2).
APPLICATIONS	Centrifuge tube to remove product from lid. Optimal working dilutions should be determined experimentally by the investigator. Prepare working dilution immediately before use. Western Blot 1:1,000 Immunoprecipitation 6 µl/mg lysate
APPLICATION NOTES	All western blot analysis is performed using 5% Milk-TBST for blocking and as antibody diluent. Primary antibody is incubated overnight. Western blots of cell lysates are performed using Goat anti-Rabbit IgG Heavy and Light Chain Antibody (A120-101P). Western blots of immunoprecipitates are performed using Goat anti-Rabbit Light Chain HRP Conjugate (A120-113P) with 5% Normal Pig Serum (S100-020) added to the blocking buffer.
ADDITIONAL INFO	https://www.fortislife.com/p/A700-322-T Use the link above to view SDS, a current list of citations, and other product specific information.

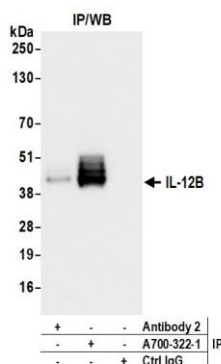
This document certifies that this product has met all of the quality control standards defined by Bethyl Laboratories, Inc.
Michael Spencer, PhD Date: May 29, 2024



Detection of human IL-12B by western blot. *Samples:* Whole cell lysate (50 µg) from 293F cells untransfected (-) or overexpressing IL-12A, IL-12B, IL-12A and IL-12B, or IL-23A and IL-12B. *Antibody:* Rabbit anti-IL-12B recombinant monoclonal antibody [BLR322M] (A700-322 lot 1) used at 1:1000. *Secondary:* HRP-conjugated goat anti-rabbit IgG (A120-101P). *Detection:* Chemiluminescence with an exposure time of 1 second.



Detection of human IL-12B by western blot. *Samples:* Human recombinant IL-12B protein (0.01 µg). *Antibody:* Rabbit anti-IL-12B recombinant monoclonal antibody [BLR322M] (A700-322 lot 1) used at 1:1000. *Secondary:* HRP-conjugated goat anti-rabbit IgG (A120-101P). *Detection:* Chemiluminescence with an exposure time of 1 second.



Detection of human IL-12B by western blot of immunoprecipitates. *Samples:* Whole cell lysate (1.0 mg per IP reaction; 20% of IP loaded) from 293F cells overexpressing IL12B. *Antibodies:* Rabbit anti-IL-12B recombinant monoclonal antibody [BLR322M] (A700-322 lot 1) used for IP at 6 µl per reaction. IL-12B was also immunoprecipitated by a second antibody against a different epitope of IL-12B (Antibody 2). For blotting immunoprecipitated IL-12B, A700-322 was used at 1:1000. *Detection:* Chemiluminescence with an exposure time of 1 second.