



SZABO SCANDIC

Part of Europa Biosite

Produktinformation



Forschungsprodukte & Biochemikalien



Zellkultur & Verbrauchsmaterial



Diagnostik & molekulare Diagnostik



Laborgeräte & Service

Weitere Information auf den folgenden Seiten!
See the following pages for more information!



Lieferung & Zahlungsart

siehe unsere [Liefer- und Versandbedingungen](#)

Zuschläge

- Mindermengenzuschlag
- Trockeneiszuschlag
- Gefahrgutzuschlag
- Expressversand

SZABO-SCANDIC HandelsgmbH

Quellenstraße 110, A-1100 Wien

T. +43(0)1 489 3961-0

F. +43(0)1 489 3961-7

mail@szabo-scandic.com

www.szabo-scandic.com

[linkedin.com/company/szaboscandic](https://www.linkedin.com/company/szaboscandic) 

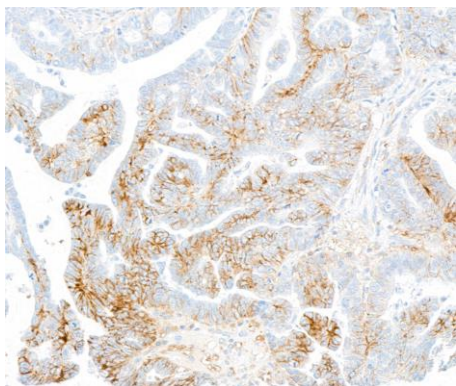
CD138 Recombinant Monoclonal Antibody [BLR323M]

Rabbit Recombinant Monoclonal

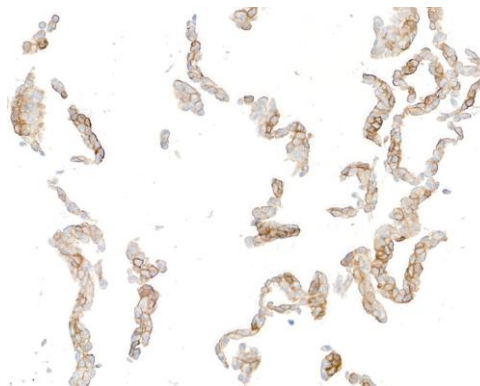
Purified		RefSeq ID	NP_002988.4
Catalog No.	A700-323-T	Uniprot ID	P18827
Lot No.	1	GeneID	6382

APPLICATIONS	IHC, ICC, Flow Cyt
SPECIES REACTIVITY	Human, Mouse
AMOUNT	10 µl (5+ tests)
CONCENTRATION	500 µg/ml
STORAGE/SHELF LIFE	2 - 8°C / 1 year from date of receipt
PHYSICAL STATE	Liquid
BUFFER	Phosphate Buffered Saline (PBS) with 0.1% BSA and 0.09% Sodium Azide
ISOTYPE	IgG
CLONE #	BLR323M
ORIGIN	USA
PRODUCTION PROCEDURES	Recombinant antibody was purified from cell culture supernatant. Immunogen was a recombinant protein representing the extracellular domain of human CD138 (residues 23-251, NP_002988.4).
APPLICATIONS	Centrifuge tube to remove product from lid. Optimal working dilutions should be determined experimentally by the investigator. Prepare working dilution immediately before use. Immunohistochemistry 1:100 to 1:500. Epitope retrieval with citrate buffer pH 6.0 is recommended for FFPE tissue sections. Immunocytochemistry 1:100 to 1:500. Epitope retrieval with citrate buffer pH 6.0 is recommended for FFPE cell sections. Flow Cytometry Live or cells fixed in 4% formaldehyde and permeabilized with 90% methanol. 0.5 µl per 1 x 10 ⁶ cells.
IHC HUMAN CONTROLS	Colon Carcinoma, Ovarian Carcinoma, Tonsil, Cal-27 Cells, Hep-G2 Cells, RPMI-8226 Cells
IHC MOUSE CONTROLS	Plasmacytoma, Uterus, AML12 Cells, NIH 3T3 Cells
ADDITIONAL INFO	https://www.fortislife.com/p/A700-323-T Use the link above to view SDS, a current list of citations, and other product specific information.

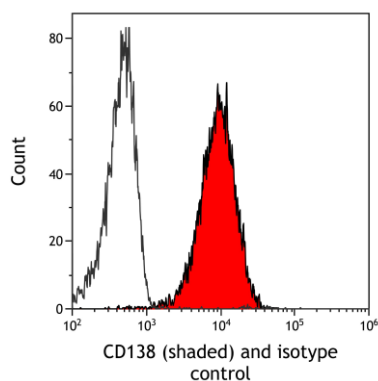
This document certifies that this product has met all of the quality control standards defined by Bethyl Laboratories, Inc.
Michael Spencer, PhD Date: June 25, 2024



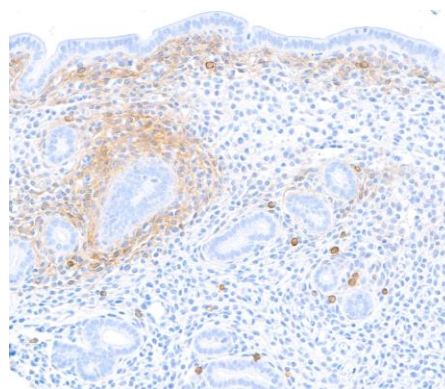
Detection of human CD138 by immunohistochemistry.
Sample: FFPE section of ovarian carcinoma. *Antibody:* Rabbit anti-CD138 recombinant monoclonal antibody [BLR323M] (A700-323). *Secondary:* HRP-conjugated goat anti-rabbit IgG (A120-501P).



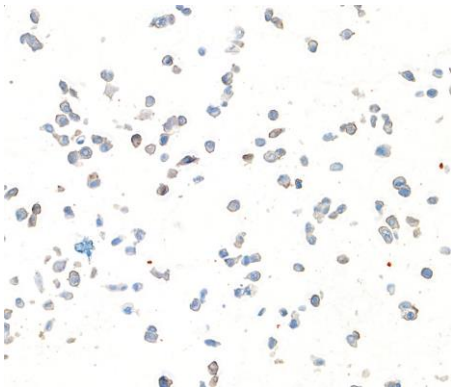
Detection of human CD138 by immunocytochemistry.
Sample: FFPE section of Cal-27 cells. *Antibody:* Rabbit anti-CD138 recombinant monoclonal antibody [BLR323M] (A700-323). *Secondary:* HRP-conjugated goat anti-rabbit IgG (A120-501P).



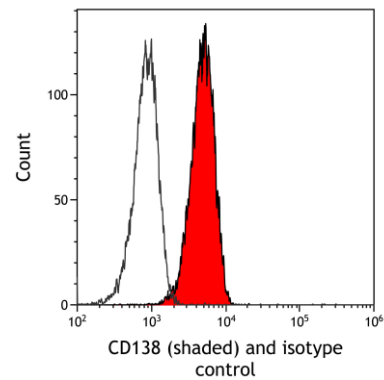
Detection of human CD138 (shaded) in HT-29 cells by flow cytometry. *Antibody:* Rabbit anti-CD138 recombinant monoclonal antibody [BLR323M] (A700-323) or isotype control (unshaded). *Secondary:* DyLight® 650-conjugated goat anti-rabbit IgG (A120-101D5).



Detection of mouse CD138 by immunohistochemistry.
Sample: FFPE section of mouse uterus. *Antibody:* Rabbit anti-CD138 recombinant monoclonal antibody [BLR323M] (A700-323). *Secondary:* HRP-conjugated goat anti-rabbit IgG (A120-501P).

**Detection of mouse CD138 by immunocytochemistry.**

Sample: FFPE section of AML12 cells. *Antibody:* Rabbit anti-CD138 recombinant monoclonal antibody [BLR323M] (A700-323). *Secondary:* HRP-conjugated goat anti-rabbit IgG (A120-501P).

**Detection of mouse CD138 (shaded) in A20 cells by flow cytometry.**

Antibody: Rabbit anti-CD138 recombinant monoclonal antibody [BLR323M] (A700-323) or isotype control (unshaded). *Secondary:* DyLight® 650-conjugated goat anti-rabbit IgG (A120-101D5).