



# SZABO SCANDIC

Part of Europa Biosite

## Produktinformation



Forschungsprodukte & Biochemikalien



Zellkultur & Verbrauchsmaterial



Diagnostik & molekulare Diagnostik



Laborgeräte & Service

Weitere Information auf den folgenden Seiten!  
See the following pages for more information!



### Lieferung & Zahlungsart

siehe unsere [Liefer- und Versandbedingungen](#)

### Zuschläge

- Mindermengenzuschlag
- Trockeneiszuschlag
- Gefahrgutzuschlag
- Expressversand

### SZABO-SCANDIC HandelsgmbH

Quellenstraße 110, A-1100 Wien

T. +43(0)1 489 3961-0

F. +43(0)1 489 3961-7

[mail@szabo-scandic.com](mailto:mail@szabo-scandic.com)

[www.szabo-scandic.com](http://www.szabo-scandic.com)

[linkedin.com/company/szaboscandic](https://www.linkedin.com/company/szaboscandic) 

# CD138 Recombinant Monoclonal Antibody [BLR323M]

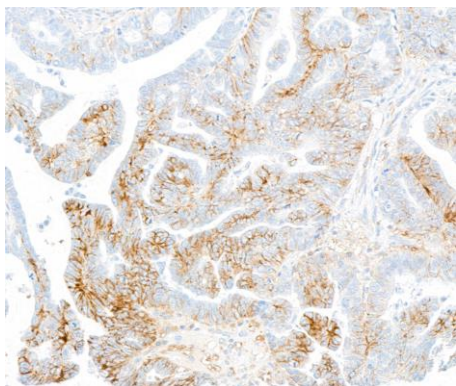
Rabbit Recombinant Monoclonal

|             |          |            |             |
|-------------|----------|------------|-------------|
| Purified    |          | RefSeq ID  | NP_002988.4 |
| Catalog No. | A700-323 | Uniprot ID | P18827      |
| Lot No.     | 1        | GeneID     | 6382        |

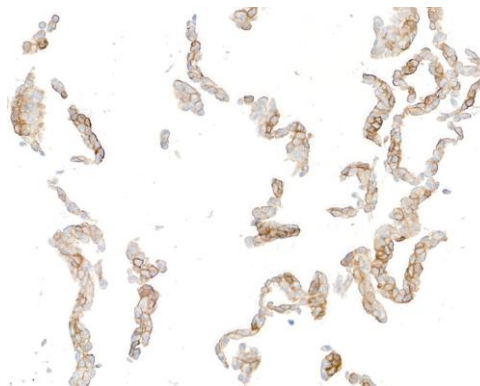
---

|                              |  |
|------------------------------|--|
| <b>APPLICATIONS</b>          | IHC, ICC, Flow Cyt   |
| <b>SPECIES REACTIVITY</b>    | Human, Mouse   |
| <b>AMOUNT</b>                | 100 µl (50+ tests)   |
| <b>CONCENTRATION</b>         | 500 µg/ml  |
| <b>STORAGE/SHELF LIFE</b>    | 2 – 8°C / 1 year from date of receipt  |
| <b>PHYSICAL STATE</b>        | Liquid   |
| <b>BUFFER</b>                | Phosphate Buffered Saline (PBS) with 0.1% BSA and 0.09% Sodium Azide   |
| <b>ISOTYPE</b>               | IgG  |
| <b>CLONE #</b>               | BLR323M  |
| <b>ORIGIN</b>                | USA  |
| <b>PRODUCTION PROCEDURES</b> | Recombinant antibody was purified from cell culture supernatant.<br><br>Immunogen was a recombinant protein representing the extracellular domain of human CD138 (residues 23-251, NP_002988.4).   |
| <b>APPLICATIONS</b>          | Centrifuge tube to remove product from lid. Optimal working dilutions should be determined experimentally by the investigator. Prepare working dilution immediately before use.<br><br>Immunohistochemistry 1:100 to 1:500. Epitope retrieval with citrate buffer pH 6.0 is recommended for FFPE tissue sections.<br><br>Immunocytochemistry 1:100 to 1:500. Epitope retrieval with citrate buffer pH 6.0 is recommended for FFPE cell sections.<br><br>Flow Cytometry Live or cells fixed in 4% formaldehyde and permeabilized with 90% methanol. 0.5 µl per 1 x 10 <sup>6</sup> cells. |
| <b>IHC HUMAN CONTROLS</b>    | Colon Carcinoma, Ovarian Carcinoma, Tonsil, Cal-27 Cells, Hep-G2 Cells, RPMI-8226 Cells  |
| <b>IHC MOUSE CONTROLS</b>    | Plasmacytoma, Uterus, AML12 Cells, NIH 3T3 Cells   |
| <b>ADDITIONAL INFO</b>       | <a href="https://www.fortislifecom.com/p/A700-323">https://www.fortislifecom.com/p/A700-323</a><br>Use the link above to view SDS, a current list of citations, and other product specific information.  |

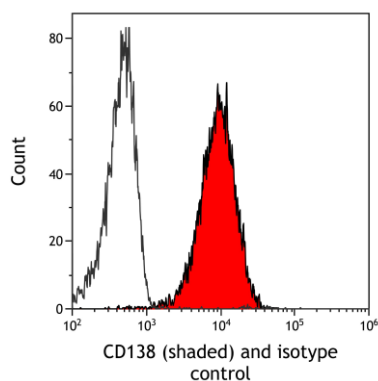
This document certifies that this product has met all of the quality control standards defined by Bethyl Laboratories, Inc.  
Michael Spencer, PhD Date: June 25, 2024



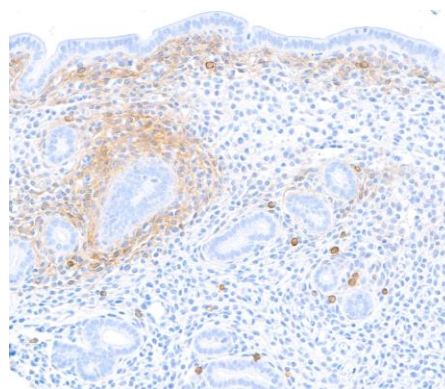
**Detection of human CD138 by immunohistochemistry.**  
*Sample:* FFPE section of ovarian carcinoma. *Antibody:* Rabbit anti-CD138 recombinant monoclonal antibody [BLR323M] (A700-323). *Secondary:* HRP-conjugated goat anti-rabbit IgG (A120-501P).



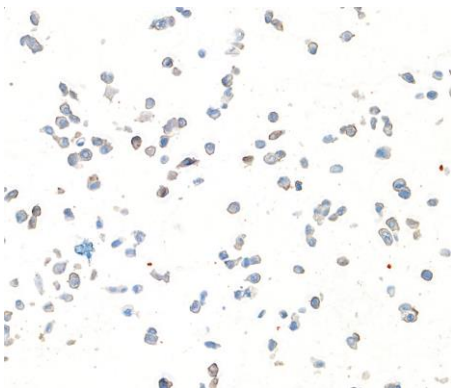
**Detection of human CD138 by immunocytochemistry.**  
*Sample:* FFPE section of Cal-27 cells. *Antibody:* Rabbit anti-CD138 recombinant monoclonal antibody [BLR323M] (A700-323). *Secondary:* HRP-conjugated goat anti-rabbit IgG (A120-501P).



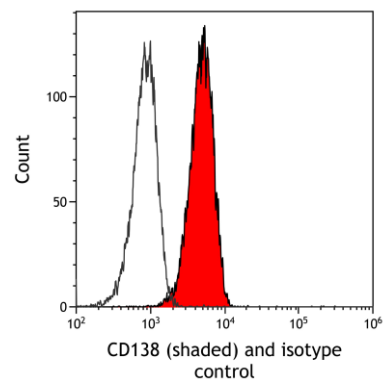
**Detection of human CD138 (shaded) in HT-29 cells by flow cytometry.** *Antibody:* Rabbit anti-CD138 recombinant monoclonal antibody [BLR323M] (A700-323) or isotype control (unshaded). *Secondary:* DyLight® 650-conjugated goat anti-rabbit IgG (A120-101D5).



**Detection of mouse CD138 by immunohistochemistry.**  
*Sample:* FFPE section of mouse uterus. *Antibody:* Rabbit anti-CD138 recombinant monoclonal antibody [BLR323M] (A700-323). *Secondary:* HRP-conjugated goat anti-rabbit IgG (A120-501P).

**Detection of mouse CD138 by immunocytochemistry.**

*Sample:* FFPE section of AML12 cells. *Antibody:* Rabbit anti-CD138 recombinant monoclonal antibody [BLR323M] (A700-323). *Secondary:* HRP-conjugated goat anti-rabbit IgG (A120-501P).

**Detection of mouse CD138 (shaded) in A20 cells by flow cytometry.**

*Antibody:* Rabbit anti-CD138 recombinant monoclonal antibody [BLR323M] (A700-323) or isotype control (unshaded). *Secondary:* DyLight® 650-conjugated goat anti-rabbit IgG (A120-101D5).