



# SZABO SCANDIC

Part of Europa Biosite

## Produktinformation



Forschungsprodukte & Biochemikalien



Zellkultur & Verbrauchsmaterial



Diagnostik & molekulare Diagnostik



Laborgeräte & Service

Weitere Information auf den folgenden Seiten!  
See the following pages for more information!



### Lieferung & Zahlungsart

siehe unsere [Liefer- und Versandbedingungen](#)

### Zuschläge

- Mindermengenzuschlag
- Trockeneiszuschlag
- Gefahrgutzuschlag
- Expressversand

### SZABO-SCANDIC HandelsgmbH

Quellenstraße 110, A-1100 Wien

T. +43(0)1 489 3961-0

F. +43(0)1 489 3961-7

[mail@szabo-scandic.com](mailto:mail@szabo-scandic.com)

[www.szabo-scandic.com](http://www.szabo-scandic.com)

[linkedin.com/company/szaboscandic](https://www.linkedin.com/company/szaboscandic) 

# Cytokeratin 5 Recombinant Monoclonal Antibody [BLR332M]

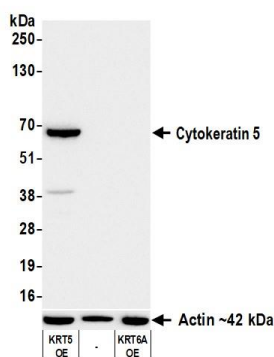
Rabbit Recombinant Monoclonal

Purified		RefSeq ID	NP_000415.2
Catalog No.	A700-332-T	Uniprot ID	P13647
Lot No.	1	GeneID	3852

---

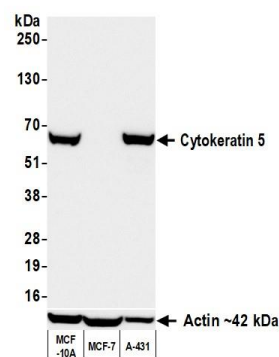
<b>APPLICATIONS</b>	WB, IHC, ICC, Flow Cyt
<b>SPECIES REACTIVITY</b>	Human, Mouse
<b>AMOUNT</b>	10 µl (5+ tests)
<b>CONCENTRATION</b>	50 µg/ml
<b>STORAGE/SHELF LIFE</b>	2 – 8°C / 1 year from date of receipt
<b>PHYSICAL STATE</b>	Liquid
<b>BUFFER</b>	Phosphate Buffered Saline (PBS) with 0.1% BSA and 0.09% Sodium Azide
<b>ISOTYPE</b>	IgG
<b>CLONE #</b>	BLR332M
<b>ORIGIN</b>	USA
<b>PRODUCTION PROCEDURES</b>	Recombinant antibody was purified from cell culture supernatant.  Immunogen was a peptide representing a region between residue 540 and the C-terminus (residue 590) of human Cytoskeletal Keratin 5 using the numbering given in entry NP_000415.2 (Gene ID 3852).
<b>APPLICATIONS</b>	Centrifuge tube to remove product from lid. Optimal working dilutions should be determined experimentally by the investigator. Prepare working dilution immediately before use.  Western Blot 1:1,000 Immunohistochemistry 1:100 to 1:500. Epitope retrieval with citrate buffer pH 6.0 is recommended for FFPE tissue sections. Immunocytochemistry 1:100 to 1:500. Epitope retrieval with citrate buffer pH 6.0 is recommended for FFPE cell sections. Flow Cytometry Fixed in 4% formaldehyde and permeabilized with 90% methanol. 2 µl per 1 x 10 <sup>6</sup> cells.
<b>APPLICATION NOTES</b>	All western blot analysis is performed using 5% Milk-TBST for blocking and as antibody diluent. Primary antibody is incubated overnight.  Western blots of cell lysates are performed using Goat anti-Rabbit IgG Heavy and Light Chain Antibody (A120-101P).
<b>IHC HUMAN CONTROLS</b>	Bladder Carcinoma, Liver Squamous Cell Carcinoma, Ovarian Carcinoma, Prostate Carcinoma, Skin Basal Cell Carcinoma, Tonsil, HaCaT Cells, MCF10A Cells
<b>IHC MOUSE CONTROLS</b>	Bladder, Skin
<b>ADDITIONAL INFO</b>	<a href="https://www.fortislife.com/p/A700-332-T">https://www.fortislife.com/p/A700-332-T</a> Use the link above to view SDS, a current list of citations, and other product specific information.

This document certifies that this product has met all of the quality control standards defined by Bethyl Laboratories, Inc.  
Michael Spencer, PhD Date: August 5, 2024



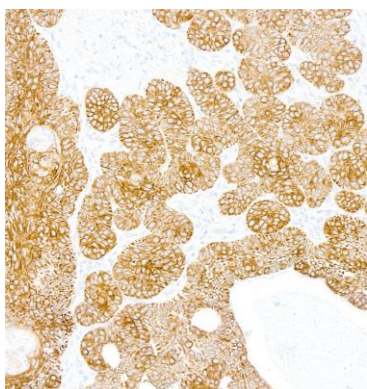
#### Detection of human Cytokeratin 5 by western blot.

**Samples:** Whole cell lysate (5 µg) from 293-F cells overexpressing Cytokeratin 5 (KRT5 OE), Cytokeratin 6A (KRT6A OE) or untransfected cells (-) prepared using NETN lysis buffer. **Antibody:** Rabbit anti-Cytokeratin 5 recombinant monoclonal antibody [BLR332M] (A700-332 lot 1) used at 1:1000. **Secondary:** HRP-conjugated goat anti-rabbit IgG (A120-101P). **Detection:** Chemiluminescence with an exposure time of 1 second. Lower Panel: Rabbit anti-Actin recombinant monoclonal antibody [BLR057F] (A700-057).

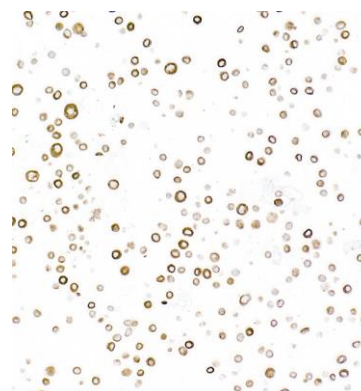


#### Detection of human Cytokeratin 5 by western blot.

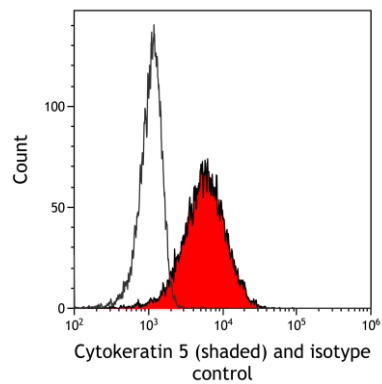
**Samples:** Whole cell lysate (50 µg) from MCF-10A, MCF-7, and A-431 cells prepared using NETN lysis buffer. **Antibody:** Rabbit anti-Cytokeratin 5 recombinant monoclonal antibody [BLR332M] (A700-332 lot 1) used at 1:1000. **Secondary:** HRP-conjugated goat anti-rabbit IgG (A120-101P). **Detection:** Chemiluminescence with an exposure time of 1 second. Lower Panel: Rabbit anti-Actin recombinant monoclonal antibody [BLR057F] (A700-057).



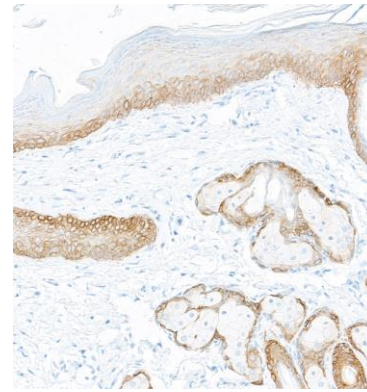
**Detection of human Cytokeratin 5 by immunohistochemistry.** **Sample:** FFPE section of skin basal cell carcinoma. **Antibody:** Rabbit anti-Cytokeratin 5 recombinant monoclonal antibody [BLR332M] (A700-332). **Secondary:** HRP-conjugated goat anti-rabbit IgG (A120-501P).



**Detection of human Cytokeratin 5 by immunocytochemistry.** **Sample:** FFPE section of MCF10a cells. **Antibody:** Rabbit anti-Cytokeratin 5 recombinant monoclonal antibody [BLR332M] (A700-332). **Secondary:** HRP-conjugated goat anti-rabbit IgG (A120-501P).



**Detection of human Cytokeratin 5 (shaded) in MCF-10A cells by flow cytometry.** *Antibody:* Rabbit anti-Cytokeratin 5 recombinant monoclonal antibody [BLR332M] (A700-332) or isotype control (unshaded). *Secondary:* DyLight® 650-conjugated goat anti-rabbit IgG (A120-101D5).



**Detection of mouse Cytokeratin 5 by immunohistochemistry.** *Sample:* FFPE section of mouse skin. *Antibody:* Rabbit anti-Cytokeratin 5 recombinant monoclonal antibody [BLR332M] (A700-332). *Secondary:* HRP-conjugated goat anti-rabbit IgG (A120-501P).