



SZABO SCANDIC

Part of Europa Biosite

Produktinformation



Forschungsprodukte & Biochemikalien



Zellkultur & Verbrauchsmaterial



Diagnostik & molekulare Diagnostik



Laborgeräte & Service

Weitere Information auf den folgenden Seiten!
See the following pages for more information!



Lieferung & Zahlungsart

siehe unsere [Liefer- und Versandbedingungen](#)

Zuschläge

- Mindermengenzuschlag
- Trockeneiszuschlag
- Gefahrgutzuschlag
- Expressversand

SZABO-SCANDIC HandelsgmbH

Quellenstraße 110, A-1100 Wien

T. +43(0)1 489 3961-0

F. +43(0)1 489 3961-7

mail@szabo-scandic.com

www.szabo-scandic.com

[linkedin.com/company/szaboscandic](https://www.linkedin.com/company/szaboscandic) 

Mouse IgG Heavy and Light Chain Antibody

Goat Polyclonal Conjugate HRP

Antigen Affinity Purified

Catalog No. A90-116P

Lot No. A90-116P-44

APPLICATIONS	WB, IHC, ICC, ELISA
SPECIES REACTIVITY	Mouse
AMOUNT	1 ml
CONCENTRATION	1 mg/ml
STORAGE/SHELF LIFE	2 - 8°C / 1 year from date of receipt
PHYSICAL STATE	Liquid
BUFFER	Phosphate Buffered Saline (PBS) containing 0.2% BSA and 0.05% Pro-Clean 400
ISOTYPE	IgG
ORIGIN	USA
PRODUCTION PROCEDURES	The antibody was isolated by affinity chromatography using antigen coupled to agarose beads and conjugated to horseradish peroxidase (HRP).

Antibody concentration was determined by extinction coefficient prior to conjugation: absorbance at 280 nm of 1.4 equals 1.0 mg of IgG. Molar enzyme/antibody protein ratio is 4:1.

By immunoelectrophoresis and ELISA this antibody reacts specifically with mouse IgG and with light chains common to other mouse immunoglobulins. No antibody was detected against non-immunoglobulin serum proteins. This antibody may cross react with IgG from other species.

APPLICATIONS Centrifuge tube to remove product from lid. Optimal working dilutions should be determined experimentally by the investigator. Prepare working dilution immediately before use.

Western Blot	1:5,000 – 1:50,000
Immunohistochemistry	1:40 – 1:400
Immunocytochemistry	1:50 – 1:500
ELISA	1:10,000 – 1:100,000

APPLICATION NOTES IHC validation was performed using Immunohistochemistry Accessory Kit (Cat. # IHC-101).

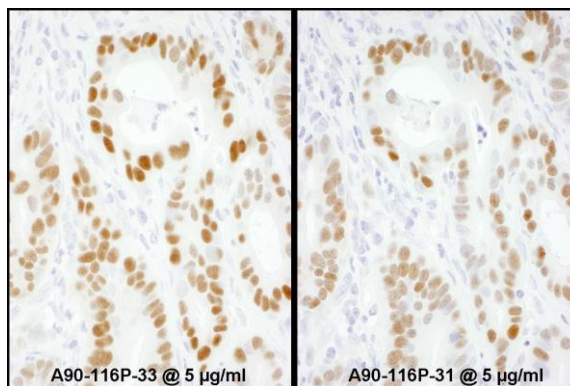
Goat anti-Mouse IgG-heavy and light chain Antibody HRP Conjugated (A90-116P Lot33) was substituted for anti-Rabbit IHC Concentrate (IHC-101D).

Not all listed applications have been specifically tested by our laboratory.

ADDITIONAL INFO <https://www.bethyl.com/product/A90-116P>

Use the link above to view SDS, a current list of citations, and other product specific information.

This document certifies that this product has met all of the quality control standards defined by Bethyl Laboratories, Inc.
Michael Spencer, PhD Date: February 4, 2022



Detection of human p53 by immunoperoxidase. *Samples:* FFPE serial sections of human stomach carcinoma. *Primary Antibody:* mouse anti-p53 (Clone DO-1) used at a dilution of 1:100. *Secondary Antibody:* goat anti-mouse IgG-heavy and light chain Antibody HRP Conjugated (A90-116P Lot 33) used at a dilution of 1:200 (5µg/ml). *Detection:* DAB