



# SZABO SCANDIC

Part of Europa Biosite

## Produktinformation



Forschungsprodukte & Biochemikalien



Zellkultur & Verbrauchsmaterial



Diagnostik & molekulare Diagnostik



Laborgeräte & Service

Weitere Information auf den folgenden Seiten!  
See the following pages for more information!



### Lieferung & Zahlungsart

siehe unsere [Liefer- und Versandbedingungen](#)

### Zuschläge

- Mindermengenzuschlag
- Trockeneiszuschlag
- Gefahrgutzuschlag
- Expressversand

### SZABO-SCANDIC HandelsgmbH

Quellenstraße 110, A-1100 Wien

T. +43(0)1 489 3961-0

F. +43(0)1 489 3961-7

[mail@szabo-scandic.com](mailto:mail@szabo-scandic.com)

[www.szabo-scandic.com](http://www.szabo-scandic.com)

[linkedin.com/company/szaboscandic](https://www.linkedin.com/company/szaboscandic) 

# Mouse IgG-heavy and light chain Antibody

Rabbit Polyclonal Conjugate HRP

Antigen Affinity Purified

Catalog No. A90-117P

Lot No. A90-117P-22



**APPLICATIONS** WB, IHC, ICC, ELISA

**AMOUNT** 1 ml

**CONCENTRATION** 1 mg/ml

**STORAGE/SHELF LIFE** 2 - 8° C / 1 year from date of receipt

**PHYSICAL STATE** Liquid

**BUFFER** Phosphate Buffered Saline (PBS) containing 0.2% BSA and 0.05% Pro-Clean 400

**ISOTYPE** IgG

**ORIGIN** USA

**PRODUCTION PROCEDURES** The antibody was isolated by affinity chromatography using antigen coupled to agarose beads and conjugated to horseradish peroxidase (HRP).

Antibody concentration was determined by extinction coefficient prior to conjugation: absorbance at 280 nm of 1.4 equals 1.0 mg of IgG. Molar enzyme/antibody protein ratio is 4:1.

By immunoelectrophoresis and ELISA this antibody reacts specifically with mouse IgG and with light chains common to other mouse immunoglobulins. No antibody was detected against non-immunoglobulin serum proteins. This antibody may cross react with IgG from other species.

**APPLICATIONS** Centrifuge tube to remove product from lid. Optimal working dilutions should be determined experimentally by the investigator. Prepare working dilution immediately before use.

Western Blot 1:5,000 - 1:50,000

Immunohistochemistry 1:50 - 1:400

Immunocytochemistry 1:50 - 1:400

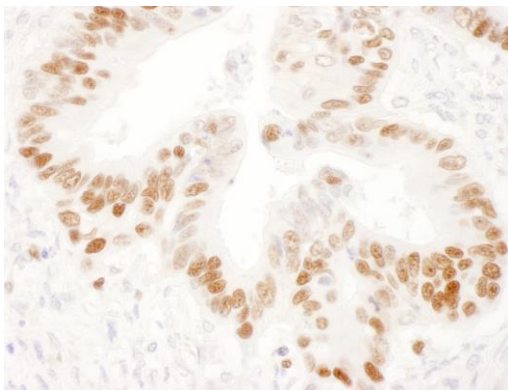
ELISA 1:10,000 - 1:100,000

**APPLICATION NOTES** Not all listed applications have been specifically tested by our laboratory.

**ADDITIONAL INFO** <https://www.bethyl.com/product/A90-117P>

Use the link above to view SDS, a current list of citations, and other product specific information.

This document certifies that this product has met all of the quality control standards defined by Bethyl Laboratories, Inc.  
Brian McWilliams, PhD Date: July 19, 2021



**Detection of human p53 by immunoperoxidase.** *Sample:* FFPE section of human stomach carcinoma. *Primary Antibody:* mouse anti-p53 (Clone DO-1) used at a dilution of 1:100. *Secondary Antibody:* Rabbit anti-mouse IgG-heavy and light chain Antibody HRP Conjugated (A90-117P Lot 14) used at a dilution of 1:100 (10µg/ml). *Detection:* DAB *Counterstain:* IHC hematoxylin (blue)