



SZABO SCANDIC

Part of Europa Biosite

Produktinformation



Forschungsprodukte & Biochemikalien



Zellkultur & Verbrauchsmaterial



Diagnostik & molekulare Diagnostik



Laborgeräte & Service

Weitere Information auf den folgenden Seiten!
See the following pages for more information!



Lieferung & Zahlungsart

siehe unsere [Liefer- und Versandbedingungen](#)

Zuschläge

- Mindermengenzuschlag
- Trockeneiszuschlag
- Gefahrgutzuschlag
- Expressversand

SZABO-SCANDIC HandelsgmbH

Quellenstraße 110, A-1100 Wien

T. +43(0)1 489 3961-0

F. +43(0)1 489 3961-7

mail@szabo-scandic.com

www.szabo-scandic.com

[linkedin.com/company/szaboscandic](https://www.linkedin.com/company/szaboscandic) 

Mouse IgG Heavy and Light Chain Cross-Adsorbed Antibody

Donkey Polyclonal Conjugate DyLight® 680

Antigen Affinity Purified

Catalog No. A90-337D6

Lot No. A90-337D6-13

APPLICATIONS	WB, IHC, ICC, F, IF
SPECIES REACTIVITY	Mouse. Minimum reactivity to bovine, chicken, goat, human, rabbit, rat and sheep
AMOUNT	1 ml
CONCENTRATION	0.5 mg/ml
STORAGE/SHELF LIFE	2 – 8°C / 1 year from date of receipt
PHYSICAL STATE	Liquid
BUFFER	Phosphate Buffered Saline (PBS) containing 0.2% BSA and 0.09% Sodium Azide
FLUOROPHORE/PROTEIN	4.0
ISOTYPE	IgG
ORIGIN	USA
PRODUCTION PROCEDURES	Antiserum was cross adsorbed using bovine, chicken, goat, human, rabbit, rat and sheep immunosorbents to remove cross reactive antibodies. The antibody to mouse IgG was isolated by affinity chromatography using antigen coupled to agarose beads and conjugated to DyLight® 680.

Antibody concentration was determined by extinction coefficient: absorbance at 280 nm of 1.4 equals 1.0 mg of IgG.

By immunoelectrophoresis and ELISA this antibody reacts specifically with mouse IgG and with light chains common to other mouse immunoglobulins. No antibody was detected against non-immunoglobulin serum proteins. Less than 2% cross reactivity to bovine, chicken, goat, human, rabbit, rat and sheep IgG was detected. This antibody may cross react with IgG from other species.

APPLICATIONS Centrifuge tube to remove product from lid. Optimal working dilutions should be determined experimentally by the investigator. Prepare working dilution immediately before use.

Western Blot 1:1,000 – 1:20,000. 5% non-fat dry milk in PBST or TBST is recommended for blocking and incubation of antibodies. BSA is not recommended.

Immunohistochemistry 1:50 – 1:500

Immunocytochemistry 1:50 – 1:500

Flow Cytometry 1:50 – 1:200

Immunofluorescence 1:50 – 1:500

APPLICATION NOTES Not all listed applications have been specifically tested by our laboratory.

DyLight® 680 is excited at 682 (in PBS) and emits at 715 (in PBS).

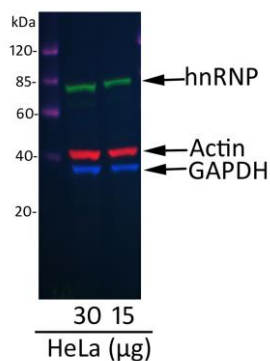
DyLight® is a trademark of Thermo Fisher Scientific Inc. and its subsidiaries.

ADDITIONAL INFO <https://www.bethyl.com/product/A90-337D6>

Use the link above to view SDS, a current list of citations, and other product specific information.

This document certifies that this product has met all of the quality control standards defined by Bethyl Laboratories, Inc.
Michael Spencer, PhD

Date: December 27, 2021



Detection of hnRNP, Actin, and GAPDH in HeLa Whole Cell Lysate. *Primary Antibodies:* cocktail of mouse anti-hnRNP A500-011A (A500-011A-1), rabbit anti-actin A300-491A (A300-491A-5), and goat anti-GAPDH A303-878A (A303-878A-1) at 1 µg/ml each. *Secondary Antibodies:* cocktail of Dylight® 680-conjugated donkey anti-mouse A90-337D6-2 (A90-337D6-2) (green), Dylight® 800-conjugated donkey anti-rabbit A120-208D8 (A120-208D8-1) (red), and Dylight® 488-conjugated donkey anti-goat A50-201D2 (A50-201D2-4) (blue) at 0.5 µg/ml each. *Acquisition:* Syngene G:Box, 73 seconds (green), 45 seconds (red), and 25 seconds (blue).