



SZABO SCANDIC

Part of Europa Biosite

Produktinformation



Forschungsprodukte & Biochemikalien



Zellkultur & Verbrauchsmaterial



Diagnostik & molekulare Diagnostik



Laborgeräte & Service

Weitere Information auf den folgenden Seiten!
See the following pages for more information!



Lieferung & Zahlungsart

siehe unsere [Liefer- und Versandbedingungen](#)

Zuschläge

- Mindermengenzuschlag
- Trockeneiszuschlag
- Gefahrgutzuschlag
- Expressversand

SZABO-SCANDIC HandelsgmbH

Quellenstraße 110, A-1100 Wien

T. +43(0)1 489 3961-0

F. +43(0)1 489 3961-7

mail@szabo-scandic.com

www.szabo-scandic.com

[linkedin.com/company/szaboscandic](https://www.linkedin.com/company/szaboscandic) 

ASH2 IHC Antibody

Rabbit Polyclonal

Antigen Affinity Purified

Protein ID Q9UBL3

Catalog No. IHC-00110

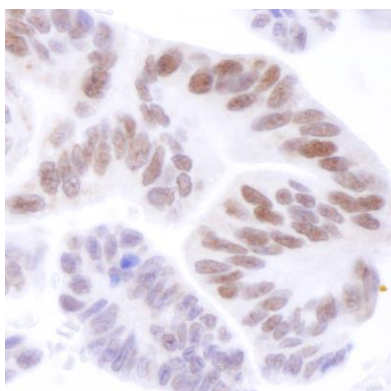
Gene ID 9070

Lot No. IHC-00110-1

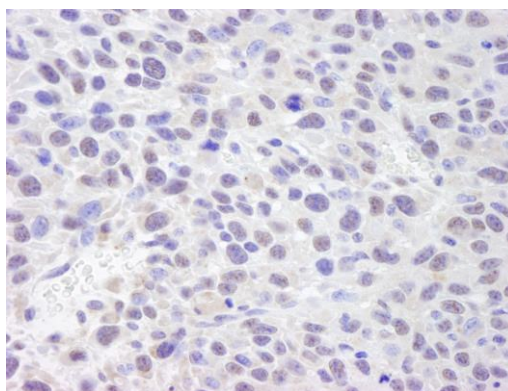


APPLICATIONS	IHC-P, IF
REACTIVITY TESTED	Human and mouse. Other species have not been tested.
PRESUMED REACTIVITY	Based on 100% sequence identity, this antibody is predicted to react with Rat, Chicken, Turkey, Bovine, Dog, Horse, Guinea pig_10141, Panda, Orangutan, Rhesus Monkey, Gorilla, Chimpanzee, Duckbill platypus, Tasmanian devil, White-tufted-ear marmoset and Northern white-cheeked gibbon.
ISOTYPE	IgG
AMOUNT	100 µl
STORAGE/SHELF LIFE	2 - 8° C / 1 year from date of receipt
PHYSICAL STATE	Liquid
BUFFER	Tris-buffered Saline containing 0.1% BSA containing 0.09% Sodium Azide
ORIGIN	USA
PRODUCTION PROCEDURES	<p>Antibody was affinity purified using an epitope specific to ASH2 immobilized on solid support.</p> <p>The epitope recognized by IHC-00110 maps to a region between residue 575 and the C-terminus (residue 628) of human Absent, Small, or Homeotic-Like 2 using the numbering given in Swiss-Prot entry Q9UBL3 (GeneID 9070).</p> <p>Antibody concentration was determined by extinction coefficient: absorbance at 280 nm of 1.4 equals 1.0 mg of IgG.</p>
APPLICATIONS	<p>Centrifuge tube to remove product from lid. Optimal working dilutions should be determined experimentally by the investigator. Prepare working dilution immediately before use.</p> <p>Immunohistochemistry 1:100 - 1:500 Immunofluorescence 1:50 - 1:500</p>
APPLICATION NOTES	Epitope exposure is recommended. Epitope exposure with citrate buffer will enhance staining. Likely to work with frozen sections. In some cases, the antibody may be diluted further than indicated.
IHC HUMAN CONTROLS	B-cell Lymphoma, Breast Carcinoma, Colon Carcinoma, Linitis Plastica Stomach Cancer, Lung Adenocarcinoma, Non-Small Cell Lung Cancer, Ovarian Carcinoma, Pancreatic Islet Cell Tumor, Prostate Carcinoma, Skin Basal Cell Carcinoma, Skin Squamous Cell Carcinoma, Small Cell Lung Cancer, Stomach Adenocarcinoma
IHC MOUSE CONTROLS	Squamous Cell Carcinoma
ADDITIONAL INFO	<p>http://www.bethyl.com/product/IHC-00110</p> <p>Use the link above to view SDS, a current list of citations, and other product specific information.</p>

ASH2 IHC Antibody: IHC-00110



Detection of Human ASH2 by Immunohistochemistry. *Sample:* FFPE section of human ovarian carcinoma. *Antibody:* Affinity purified rabbit anti-ASH2 (Cat. No. IHC-00110) used at a dilution of 1:250. *Detection:* DAB staining using anti-Rabbit IHC antibody (Cat. No. A120-501P) at a dilution of 1:100.



Detection of Mouse ASH2 by Immunohistochemistry. *Sample:* FFPE section of mouse squamous cell carcinoma. *Antibody:* Affinity purified rabbit anti-ASH2 (Cat. No. IHC-00110) used at a dilution of 1:250. *Detection:* DAB staining using anti-Rabbit IHC antibody (Cat. No. A120-501P) at a dilution of 1:100.