



SZABO SCANDIC

Part of Europa Biosite

Produktinformation



Forschungsprodukte & Biochemikalien



Zellkultur & Verbrauchsmaterial



Diagnostik & molekulare Diagnostik



Laborgeräte & Service

Weitere Information auf den folgenden Seiten!
See the following pages for more information!



Lieferung & Zahlungsart

siehe unsere [Liefer- und Versandbedingungen](#)

Zuschläge

- Mindermengenzuschlag
- Trockeneiszuschlag
- Gefahrgutzuschlag
- Expressversand

SZABO-SCANDIC HandelsgmbH

Quellenstraße 110, A-1100 Wien

T. +43(0)1 489 3961-0

F. +43(0)1 489 3961-7

mail@szabo-scandic.com

www.szabo-scandic.com

[linkedin.com/company/szaboscandic](https://www.linkedin.com/company/szaboscandic) 

WDFY3 IHC Antibody

Rabbit Polyclonal

Antigen Affinity Purified	RefSeq ID	NP_055806.2
Catalog No. IHC-00372	Uniprot ID	Q8IZQ1
Lot No. IHC-00372-2	GeneID	23001

APPLICATIONS	IHC
SPECIES REACTIVITY	Human
PRESUMED REACTIVITY	Based on 100% sequence identity, this antibody is predicted to react with Bovine, Dog, Pig, Orangutan, Gorilla, Chimpanzee, Northern white-cheeked gibbon, Little brown bat and Ferret
AMOUNT	100 µl
CONCENTRATION	100 µg/ml
STORAGE/SHELF LIFE	2 – 8°C / 1 year from date of receipt
PHYSICAL STATE	Liquid
BUFFER	Tris-buffered Saline containing 0.1% BSA and 0.09% Sodium Azide
ISOTYPE	IgG
ORIGIN	USA
PRODUCTION PROCEDURES	Antibody was affinity purified using an epitope specific to WDFY3 immobilized on solid support.

The epitope recognized by IHC-00372 maps to a region between residue 500 and 550 of human WD repeat and FYVE domain containing 3 using the numbering given in entry NP_055806.2 (GeneID 23001).

Antibody concentration was determined by extinction coefficient: absorbance at 280 nm of 1.4 equals 1.0 mg of IgG.

APPLICATIONS Centrifuge tube to remove product from lid. Optimal working dilutions should be determined experimentally by the investigator. Prepare working dilution immediately before use.

Immunohistochemistry 1:100 – 1:500

APPLICATION NOTES Epitope exposure is recommended.

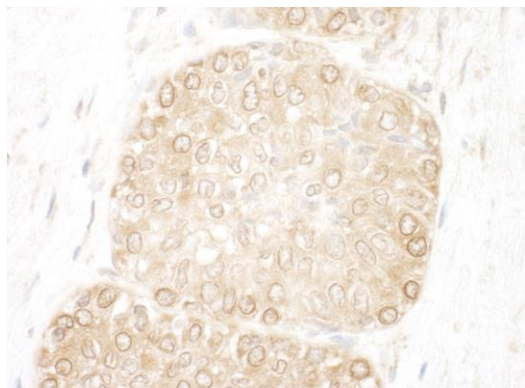
Epitope exposure with citrate buffer will enhance staining.

Likely to work with frozen sections.

IHC HUMAN CONTROLS In some cases, the antibody may be diluted further than indicated.
Breast Carcinoma, Ovarian Carcinoma, Placenta, Prostate Carcinoma

ADDITIONAL INFO <https://www.fortislifesciences.com/p/IHC-00372>
Use the link above to view SDS, a current list of citations, and other product specific information.

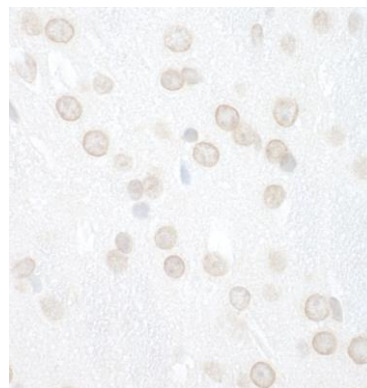
This document certifies that this product has met all of the quality control standards defined by Bethyl Laboratories, Inc.
Michael Spencer, PhD Date: November 15, 2022

**Detection of human WDFY3 by immunohistochemistry.**

Sample: FFPE section of human prostate carcinoma.

Antibody: Rabbit anti-WDFY3 antibody (IHC-00372-2).

Secondary: HRP-conjugated goat anti-rabbit IgG (A120-501P).

**Detection of human WDFY3 by immunohistochemistry.**

Sample: FFPE section of human glioblastoma. *Antibody:*

Rabbit anti-WDFY3 antibody (IHC-00372-2). *Secondary:*

HRP-conjugated goat anti-rabbit IgG (A120-501P).