



# SZABO SCANDIC

Part of Europa Biosite

## Produktinformation



Forschungsprodukte & Biochemikalien



Zellkultur & Verbrauchsmaterial



Diagnostik & molekulare Diagnostik



Laborgeräte & Service

Weitere Information auf den folgenden Seiten!  
See the following pages for more information!



### Lieferung & Zahlungsart

siehe unsere [Liefer- und Versandbedingungen](#)

### Zuschläge

- Mindermengenzuschlag
- Trockeneiszuschlag
- Gefahrgutzuschlag
- Expressversand

### SZABO-SCANDIC HandelsgmbH

Quellenstraße 110, A-1100 Wien

T. +43(0)1 489 3961-0

F. +43(0)1 489 3961-7

[mail@szabo-scandic.com](mailto:mail@szabo-scandic.com)

[www.szabo-scandic.com](http://www.szabo-scandic.com)

[linkedin.com/company/szaboscandic](https://www.linkedin.com/company/szaboscandic) 

# SARS-CoV-2 S-RBD/HIS Tag Protein [HEK293 Expressed]

## Recombinant Protein

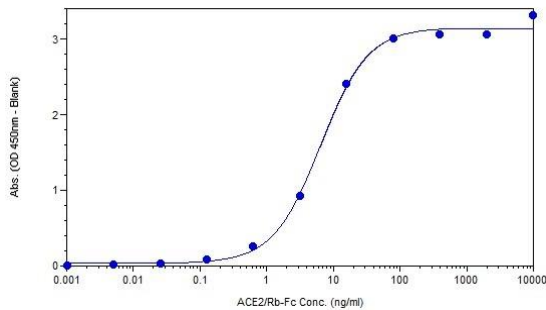
Purified		Protein ID	YP_009724390.1
Catalog No.	P170-100	GeneID	43740568
Lot No.	P170-100-1		

---

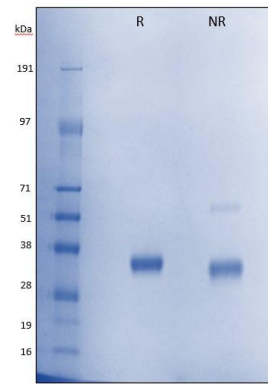
<b>APPLICATIONS</b>	ELISA
<b>AMOUNT</b>	100 µl
<b>CONCENTRATION</b>	1000 µg/ml
<b>STORAGE/SHELF LIFE</b>	Store at -20°C to -80°C / 3 months from date of receipt
<b>PHYSICAL STATE</b>	Liquid
<b>BUFFER</b>	Phosphate Buffered Saline (PBS) containing 0.09% Sodium Azide
<b>ORIGIN</b>	USA
<b>PRODUCTION PROCEDURES</b>	HEK293-derived SARS-CoV-2 S-RBD protein Ala319-Phe541, with a C-terminal 6-His tag.  Protein was purified from cell culture supernatant by IMAC chromatography.  30-35kDa observed molecular weight by SDS-PAGE under reducing conditions.  Purity >90% by SDS-PAGE.  SARS-CoV-2 S-RBD protein binding activity determined in functional ELISA with ACE2/Rb-Fc (Cat# P710-001). See figure for details.

**ADDITIONAL INFO** <https://www.bethyl.com/product/P170-100>  
Use the link above to view SDS, a current list of citations, and other product specific information.

This document certifies that this product has met all of the quality control standards defined by Bethyl Laboratories, Inc.  
Michael Spencer, PhD Date: May 3, 2022



**Analysis of Recombinant SARS-CoV-2 S-RBD/ HIS tag Protein by ELISA.** *Sample:* Plate coated with SARS-CoV-2 S-RBD/HIS Tag (P170-100 lot 1) at 2 µg/ml. ACE2/Rb Fc Chimera Protein (P710-001 lot 1) 5-fold dilution series added beginning at 10,000 ng/ml. *Detection:* A120-111P used at 1:25K dilution.



**Analysis of Recombinant SARS-CoV-2 S-RBD/ HIS tag Protein by SDS-PAGE and Coomassie staining.** *Sample:* 2 µg/lane of Recombinant SARS-CoV-2 S-RBD/ HIS tag Protein (HEK293 Expressed) (P170-100 lot 1). *Detection:* Resolved on a 4-12% gradient gel under reducing (R) and non-reducing (NR) conditions and visualized by Coomassie Blue staining.