



SZABO SCANDIC

Part of Europa Biosite

Produktinformation



Forschungsprodukte & Biochemikalien



Zellkultur & Verbrauchsmaterial



Diagnostik & molekulare Diagnostik



Laborgeräte & Service

Weitere Information auf den folgenden Seiten!
See the following pages for more information!



Lieferung & Zahlungsart

siehe unsere [Liefer- und Versandbedingungen](#)

Zuschläge

- Mindermengenzuschlag
- Trockeneiszuschlag
- Gefahrgutzuschlag
- Expressversand

SZABO-SCANDIC HandelsgmbH

Quellenstraße 110, A-1100 Wien

T. +43(0)1 489 3961-0

F. +43(0)1 489 3961-7

mail@szabo-scandic.com

www.szabo-scandic.com

[linkedin.com/company/szaboscandic](https://www.linkedin.com/company/szaboscandic) 

Human ACE2/Rb Fc Chimera Protein [HEK293 Expressed]

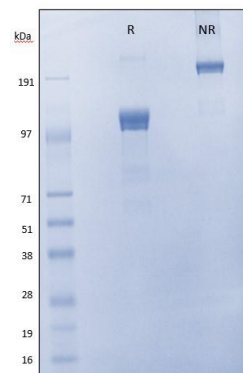
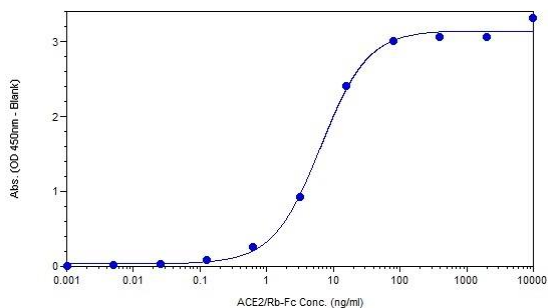
Recombinant Protein

Purified		Protein ID	NP_068576.1
Catalog No.	P710-001	GeneID	59272
Lot No.	P710-001-1		

APPLICATIONS	ELISA
AMOUNT	100 µl
CONCENTRATION	1000 µg/ml
STORAGE/SHELF LIFE	Store at -20°C to -80°C / 3 months from date of receipt
PHYSICAL STATE	Liquid
BUFFER	Phosphate Buffered Saline (PBS) containing 0.09% Sodium Azide
ORIGIN	USA
PRODUCTION PROCEDURES	HEK293-derived human ACE2 Gln18-Ser740, with a C-terminal Myc/TEV/HIS6/Rb-Fc Tag. Protein was purified from cell culture supernatant by Protein A chromatography. By SDS-PAGE, the protein runs at ~125kDa under reducing conditions. Purity >90% by SDS-PAGE as judged by Coomassie Blue staining. ACE2 binding activity determined in functional ELISA with SARS-CoV-2 S-RBD/HIS tag Protein (Cat# P170-100). See figure for details.

ADDITIONAL INFO <https://www.bethyl.com/product/P710-001>
Use the link above to view SDS, a current list of citations, and other product specific information.

This document certifies that this product has met all of the quality control standards defined by Bethyl Laboratories, Inc.
Michael Spencer, PhD Date: April 27, 2022



Analysis of Recombinant Human ACE2/Rb Fc Chimera Protein by ELISA. *Sample:* Plate coated with SARS-CoV2 S-RBD/HIS Tag (P170-100 lot 1) at 2 µg/ml. ACE2/Rb Fc Chimera Protein (P710-001 lot 1) 5-fold dilution series added beginning at 10,000 ng/ml. *Detection:* A120-111P used at 1:25K dilution.

Analysis of Recombinant Human ACE2/Rb Fc Chimera Protein by SDS-PAGE and Coomassie staining. *Sample:* 2 µg/lane of Recombinant Human ACE2/Rb Fc Chimera (P710-001 lot 1). *Detection:* Resolved with SDS-PAGE under reducing (R) and non-reducing (NR) conditions and visualized by Coomassie® Blue staining, showing bands at ~126 kDa under reducing conditions.