



# SZABO SCANDIC

Part of Europa Biosite

## Produktinformation



Forschungsprodukte & Biochemikalien



Zellkultur & Verbrauchsmaterial



Diagnostik & molekulare Diagnostik



Laborgeräte & Service

Weitere Information auf den folgenden Seiten!  
See the following pages for more information!



### Lieferung & Zahlungsart

siehe unsere [Liefer- und Versandbedingungen](#)

### Zuschläge

- Mindermengenzuschlag
- Trockeneiszuschlag
- Gefahrgutzuschlag
- Expressversand

### SZABO-SCANDIC HandelsgmbH

Quellenstraße 110, A-1100 Wien

T. +43(0)1 489 3961-0

F. +43(0)1 489 3961-7

[mail@szabo-scandic.com](mailto:mail@szabo-scandic.com)

[www.szabo-scandic.com](http://www.szabo-scandic.com)

[linkedin.com/company/szaboscandic](https://www.linkedin.com/company/szaboscandic) 



## Apolipoprotein J, His Tag, canine recombinant (rcApo-J-His)

**Catalog No:** 69757  
**Lot No:** XXXXX  
**Source:** *E. coli*  
**Synonyms:** CLI, AAG4, KUB1, SGP2, SGP-2, SP-40, TRPM2, MGC24903, Glycoprotein 80, Gp80, CLU, Clusterin, Apolipoprotein J, Apo-J

### Background

Clusterin also named Apolipoprotein J (APO-J) is a 75-80 kD disulfide-linked heterodimeric protein containing about 30% of N-linked carbohydrate rich in sialic acid but truncated forms targeted to the nucleus have also been identified. The precursor polypeptide chain is cleaved proteolytically to remove the 22-mer secretory signal peptide and subsequently between residues 227/228 to generate the a and b chains. These are assembled in anti-parallel to give a heterodimeric molecule in which the cysteine-rich centers are linked by five disulfide bridges and are flanked by two predicted coiled-coil  $\alpha$ -helices and three predicted amphipathic  $\alpha$ -helices. Across a broad range of species clusterin shows a high degree of sequence homology ranging from 70% to 80%. It is nearly ubiquitously expressed in most mammalian tissues and can be found in plasma, milk, urine, cerebrospinal fluid and semen. It is able to bind and form complexes with numerous partners such as immunoglobulins, lipids, heparin, bacteria, complement components, paraoxonase, beta amyloid, leptin and others. Clusterin has been ascribed a plethora of functions such as phagocyte recruitment, aggregation induction, complement attack prevention, apoptosis inhibition, membrane remodeling, lipid transport, hormone transport and/or scavenging, matrix metalloproteinase inhibition. A genuine function of clusterin has not been defined. One tempting hypothesis says that clusterin is an extracellular chaperone protecting cells from stress induced insults caused by degraded and misfolded protein precipitates. Clusterin is up- or down regulated on the mRNA or protein level in many pathological and clinically relevant situations including cancer, organ regeneration, infection, Alzheimer disease, retinitis pigmentosa, myocardial infarction, renal tubular damage, autoimmunity and others.

### Description

Apolipoprotein-J canine recombinant produced in *E. coli* is a single, non-glycosylated, polypeptide chain containing 433 amino acids and having a molecular mass of 50.6 kDa. The protein is fused to His Tag at the N-terminus. Apolipoprotein-J canine is purified by proprietary chromatographic techniques. The amino acid sequence is identical to UniProtKB/Swiss-Prot entry P25473 (amino acids 23–445).

### Physical Appearance

Sterile filtered white lyophilized (freeze-dried) powder.

### Formulation

Canine Clusterin was lyophilized from PBS, pH 7.5.

### Solubility

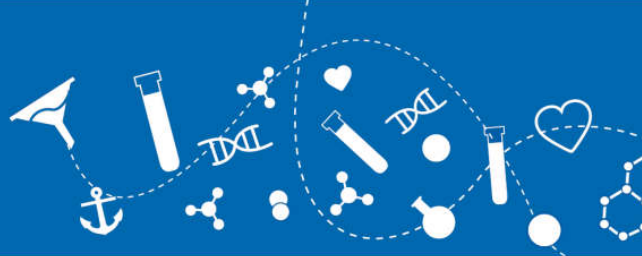
Add deionized H<sub>2</sub>O to a working volume of 0.5 mg/ml and let the lyophilized pellet dissolve completely.

### Stability

Store lyophilized protein at -20°C. Aliquot the product after reconstitution to avoid repeated freezing/thawing cycles. Reconstituted protein can be stored at 4°C for a limited period of time; it does not show any change after two weeks at 4°C.

### Purity

Greater than 95% as determined by SDS PAGE.



### Amino Acid Sequence

MKHHHHHSHAS DQAVSDTELQ EMSTEGSKYI NKEIKNALKG VKQIKTLIEQ TNEERKSLLS NLEEAKKKKE DALNDTKDSE  
TKLKASQGVC NDTMMALWEE CKPCLKQTCM KFYARVCRSG SGLVGHQLEE FLNQSSPFYF WMNGDRIDSL LENDRQQTHA  
LDVMQDSFNR ASSIMDELFO DRFFFTREPQD TYHYSFSLF QRRPFFNPKF RIARNIIPFP RFQPLNFHDM FQPFFDMIHQ  
AQQAMDVNLH RPYHFPIEF PEEDNRTVCK EIRHNSTGCL KMKDQCEKQ EILSVDCSSN NPAQVQLRQE LSNSLQIAEK  
FTKLYDELLQ SYQEKMFNTS SLLKQLNEQF SWVSQLANLT QSEDPFYLVV TTVGSQTSDS NVPVGFVKV VKLFDSDPIT  
VMIPEAVSRN NPKFMETVAE KALQEYRQKH REE

### Usage

**This product is offered by Biomol for research purposes only. Not for diagnostic purposes or human use. It may not be resold or used to manufacture commercial products without written approval of Biomol GmbH.**