



# SZABO SCANDIC

Part of Europa Biosite

## Produktinformation



Forschungsprodukte & Biochemikalien



Zellkultur & Verbrauchsmaterial



Diagnostik & molekulare Diagnostik



Laborgeräte & Service

Weitere Information auf den folgenden Seiten!  
See the following pages for more information!



### Lieferung & Zahlungsart

siehe unsere [Liefer- und Versandbedingungen](#)

### Zuschläge

- Mindermengenzuschlag
- Trockeneiszuschlag
- Gefahrgutzuschlag
- Expressversand

### SZABO-SCANDIC HandelsgmbH

Quellenstraße 110, A-1100 Wien

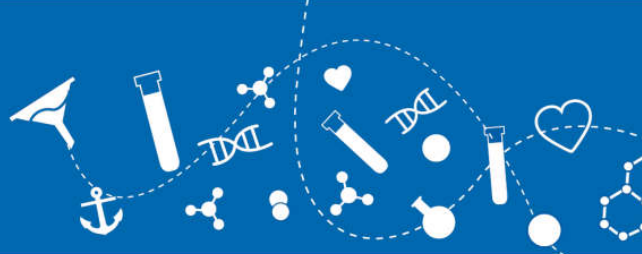
T. +43(0)1 489 3961-0

F. +43(0)1 489 3961-7

[mail@szabo-scandic.com](mailto:mail@szabo-scandic.com)

[www.szabo-scandic.com](http://www.szabo-scandic.com)

[linkedin.com/company/szaboscandic](https://www.linkedin.com/company/szaboscandic) 



## Leptin, His Tag, human recombinant (rHuLeptin-His)

**Catalog No:** 94918  
**Lot No:** XXXXX  
**Source:** *E. coli*  
**Synonyms:** OB Protein, Obesity Protein, OBS, Obesity factor

### Background

Leptin is a protein hormone with important effects in regulating body weight, metabolism and reproductive function. The protein is approximately ~16 kDa in mass and encoded by the obese (*ob*) gene. Leptin is expressed predominantly by adipocytes, which fits with the idea that body weight is sensed as the total mass of fat in the body. Smaller amounts of leptin are also secreted by cells in the epithelium of the stomach and in the placenta. Leptin receptors are highly expressed in areas of the hypothalamus known to be important in regulating body weight, as well as in T lymphocytes and vascular endothelial cells.

### Description

Leptin human recombinant produced in *E. coli* is a single, non-glycosylated, polypeptide chain containing amino acids 48-167 and having a total molecular mass of 19 kDa including the 4 kDa His Tag. Leptin is purified by proprietary chromatographic techniques.

### Physical Appearance

Sterile filtered white lyophilized (freeze-dried) powder.

### Formulation

The protein was lyophilized from a concentrated (1 mg/ml) solution with 1X PBS, 0.1% SDS and 1 mM DTT.

### Solubility

Lyophilized leptin is very soluble in water and most aqueous buffers below and above the isoelectric point.

### Stability

Lyophilized leptin, although stable at room temperature, should be stored desiccated below 0°C. Reconstituted leptin is best stored refrigerated at 4°C. Please avoid freeze-thaw cycles.

### Purity

Greater than 90.0% as determined by (a) Analysis by RP-HPLC, (b) Analysis by SDS-PAGE.

### Applications

Protein Assays\* Antibody Production\* WB

### Usage

**This product is offered by Biomol for research purposes only. Not for diagnostic purposes or human use. It may not be resold or used to manufacture commercial products without written approval of Biomol GmbH.**