



# SZABO SCANDIC

Part of Europa Biosite

## Produktinformation



Forschungsprodukte & Biochemikalien



Zellkultur & Verbrauchsmaterial



Diagnostik & molekulare Diagnostik



Laborgeräte & Service

Weitere Information auf den folgenden Seiten!  
See the following pages for more information!



### Lieferung & Zahlungsart

siehe unsere [Liefer- und Versandbedingungen](#)

### Zuschläge

- Mindermengenzuschlag
- Trockeneiszuschlag
- Gefahrgutzuschlag
- Expressversand

### SZABO-SCANDIC HandelsgmbH

Quellenstraße 110, A-1100 Wien

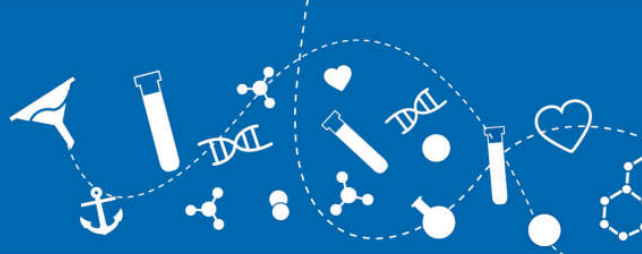
T. +43(0)1 489 3961-0

F. +43(0)1 489 3961-7

[mail@szabo-scandic.com](mailto:mail@szabo-scandic.com)

[www.szabo-scandic.com](http://www.szabo-scandic.com)

[linkedin.com/company/szaboscandic](https://www.linkedin.com/company/szaboscandic) 



## B-type Natriuretic Protein (BNP), human

**Catalog No:** 94959  
**Lot No:** XXXXX  
**Source:** Synthetic  
**Synonyms:** NPPB, Natriuretic Peptide Precursor B, BNP, B-type Natriuretic Peptide

### Background

Natriuretic Peptide Precursor B acts as a cardiac hormone with a variety of biological actions including natriuresis, diuresis, vasorelaxation, and inhibition of renin and aldosterone secretion. It is thought to play a key role in cardiovascular homeostasis. Helps restore the body's salt and water balance. Improves heart function.

### Description

B-type Natriuretic Peptide human is a polypeptide chain containing 32 amino acids and having a molecular mass of 3464 Dalton.

### Physical Appearance

Sterile filtered white lyophilized (freeze-dried) powder.

### Formulation

The protein was lyophilized without additives.

### Solubility

It is recommended to reconstitute the lyophilized B-type Natriuretic Peptide in sterile 18 M $\Omega$ -cm H<sub>2</sub>O not less than 100  $\mu$ g/ml, which can then be further diluted to other aqueous solutions.

### Stability

Lyophilized B-type Natriuretic Peptide, although stable at room temperature for 3 weeks, should be stored desiccated below -18°C. Upon reconstitution B-type Natriuretic Peptide should be stored at 4°C between 2-7 days and for future use below -18°C. For long term storage it is recommended to add a carrier protein (0.1% HSA or BSA). Please prevent freeze-thaw cycles.

### Purity

Greater than 95.0% as determined by Analysis by RP-HPLC.

### Amino Acid Sequence

SPKMOVQSGC FGRKMDRISS SSGLGCKVLR RH

### Usage

**This product is offered by Biomol for research purposes only. Not for diagnostic purposes or human use. It may not be resold or used to manufacture commercial products without written approval of Biomol GmbH.**