



# SZABO SCANDIC

Part of Europa Biosite

## Produktinformation



Forschungsprodukte & Biochemikalien



Zellkultur & Verbrauchsmaterial



Diagnostik & molekulare Diagnostik



Laborgeräte & Service

Weitere Information auf den folgenden Seiten!  
See the following pages for more information!



### Lieferung & Zahlungsart

siehe unsere [Liefer- und Versandbedingungen](#)

### Zuschläge

- Mindermengenzuschlag
- Trockeneiszuschlag
- Gefahrgutzuschlag
- Expressversand

### SZABO-SCANDIC HandelsgmbH

Quellenstraße 110, A-1100 Wien

T. +43(0)1 489 3961-0

F. +43(0)1 489 3961-7

[mail@szabo-scandic.com](mailto:mail@szabo-scandic.com)

[www.szabo-scandic.com](http://www.szabo-scandic.com)

[linkedin.com/company/szaboscandic](https://www.linkedin.com/company/szaboscandic) 



## Mucosae-Associated Epithelial Chemokine (CCL28), mouse recombinant (rmMEC)

**Catalog No:** 97263  
**Lot No:** XXXXX  
**Source:** *E. coli*  
**Synonyms:** MEC, CCK1, SCYA28, MGC71902, CCL28, C-C motif chemokine 28, Small-inducible cytokine A28, Mucosae-associated epithelial chemokine, Protein CCK1

### Background

CCL28 is part of the subfamily of small cytokine CC genes. CCL28 shows chemotactic activity for resting CD4 or CD8 T cells and eosinophils. CCL28 binds to chemokine receptors CCR3 and CCR10. CCL28 is involved in the physiology of extracutaneous epithelial tissues, including diverse mucosal organs. CCL28 mediates mucosal immunity in HIV exposure and infection. CCL28 is involved in the pathogenesis of inflammatory skin diseases. Human CCL28 cDNA encodes a 127 amino acid residue precursor protein with a putative 22 amino acid residue signal peptide that is cleaved to produce the 105 amino acid residue mature protein. Human and mouse CCL28 are highly conserved, sharing 83% amino acid identity in their mature regions. CCL28 shares the most homology with CCL27/CTACK. Human and mouse CCL28 RNA expression was found to be highest in normal and pathologic colon with the protein being expressed by epithelial cells. Human CCL28 RNA was also present in normal and asthmatic lung tissues.

### Description

CCL28 mouse recombinant produced in *E. coli* is a single, non-glycosylated, polypeptide chain containing 111 amino acids and having a molecular mass of 12.6 kDa. CCL28 is purified by proprietary chromatographic techniques.

### Physical Appearance

Sterile filtered white lyophilized (freeze-dried) powder.

### Formulation

Lyophilized from a concentrated (1 mg/ml) solution in water containing 20 mM phosphate buffer pH 7.4 and 150 mM NaCl.

### Solubility

It is recommended to reconstitute the lyophilized CCL28 in sterile 18 M $\Omega$ -cm H<sub>2</sub>O not less than 100  $\mu$ g/ml, which can then be further diluted to other aqueous solutions.

### Stability

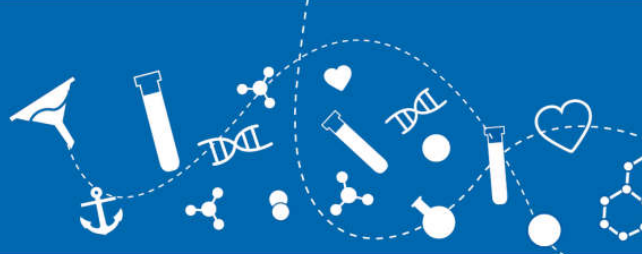
Lyophilized CCL28, although stable at room temperature for 3 weeks, should be stored desiccated below -18°C. Upon reconstitution CCL28 should be stored at 4°C between 2-7 days and for future use below -18°C. For long term storage it is recommended to add a carrier protein (0.1% HSA or BSA). Please prevent freeze-thaw cycles.

### Purity

Greater than 97.0% as determined by (a) Analysis by RP-HPLC, (b) Analysis by SDS-PAGE.

### Amino Acid Sequence

SEAILPMASS CTEVSHHVS GRLLERVSSC SIQRADGDCD LAAVILHVKR RRICISPHNR TLKQWMRASE VKKNGRENV  
SGKKQPSRKD RKGHTTRKHR TRGTHRHEAS R



**Activity**

Determined by its ability to chemoattract mouse lymphocytes using a concentration range of 1 - 10 ng/ml corresponding to a specific activity of 100,000 - 1,000,000 IU/mg.

**Usage**

**This product is offered by Biomol for research purposes only. Not for diagnostic purposes or human use. It may not be resold or used to manufacture commercial products without written approval of Biomol GmbH.**