



# SZABO SCANDIC

Part of Europa Biosite

## Produktinformation



Forschungsprodukte & Biochemikalien



Zellkultur & Verbrauchsmaterial



Diagnostik & molekulare Diagnostik



Laborgeräte & Service

Weitere Information auf den folgenden Seiten!  
See the following pages for more information!



### Lieferung & Zahlungsart

siehe unsere [Liefer- und Versandbedingungen](#)

### Zuschläge

- Mindermengenzuschlag
- Trockeneiszuschlag
- Gefahrgutzuschlag
- Expressversand

### SZABO-SCANDIC HandelsgmbH

Quellenstraße 110, A-1100 Wien

T. +43(0)1 489 3961-0

F. +43(0)1 489 3961-7

[mail@szabo-scandic.com](mailto:mail@szabo-scandic.com)

[www.szabo-scandic.com](http://www.szabo-scandic.com)

[linkedin.com/company/szaboscandic](https://www.linkedin.com/company/szaboscandic) 



## Stromal Cell-Derived Factor-1 beta (CXCL12), rat recombinant (rrSDF1b)

**Catalog No:** 97337  
**Lot No:** XXXXX  
**Source:** *E. coli*  
**Synonyms:** SDF-1, CXCL12, Pre-B cell growth-stimulating factor, PBSF, hIRH, chemokine (C-X-C motif) ligand 12, SDF1, SDF1B, TPAR1, SCYB12, SDF-1b, TLSF-b, 12-O-tetradecanoylphorbol 13-acetate repressed protein 1, Thymic lymphoma cell-stimulating factor, TLSF

### Background

SDF-1 (stromal cell-derived factor-1) is small cytokine belonging to the chemokine family that is officially designated Chemokine (C-X-C motif) ligand 12 (CXCL12). It is produced in two forms, SDF-1 $\alpha$ /CXCL12a and SDF-1 $\beta$ /CXCL12b, by alternate splicing of the same gene. Chemokines are characterized by the presence of four conserved cysteines, which form two disulfide bonds. The CXCL12 proteins belong to the group of CXC chemokines, whose initial pair of cysteines are separated by one intervening amino acid. CXCL12 is strongly chemotactic for lymphocytes and has been implicated as an important cell co-ordinator during development. During embryogenesis it directs the migration of hematopoietic cells from foetal liver to bone marrow. Mice which were knocked-out for CXCL12 gene were lethal before the birth or within just 1 hour of life. As another role, CXCL12a alters also the electrophysiology of neurons. CXCL12 was shown to be expressed in many tissues in mice (including brain, thymus, heart, lung, liver, kidney, spleen and bone marrow). The receptor for this chemokine is CXCR4, which was previously called fusin. This CXCL12-CXCR4 interaction used to be considered exclusive (unlike for other chemokines and their receptors), but recently it was suggested that CXCL12 is also bound by CXCR7 receptor. The gene for CXCL12 is located on human chromosome 10. In human and mouse both CXCL12 and CXCR4 show high identity of sequence: 99% and 90%, respectively.

### Description

Stromal Cell-Derived Factor-1 beta rat recombinant produced in *E. coli* is a non-glycosylated, polypeptide chain containing 72 amino acids and having a molecular mass of 8.4 kDa. SDF-1b is purified by proprietary chromatographic techniques.

### Physical Appearance

Sterile filtered white lyophilized (freeze-dried) powder.

### Formulation

The rat SDF1B protein was lyophilized from a concentrated (1 mg/ml) sterile solution containing 20 mM phosphate buffer pH 7.4 and 0.15 M NaCl.

### Solubility

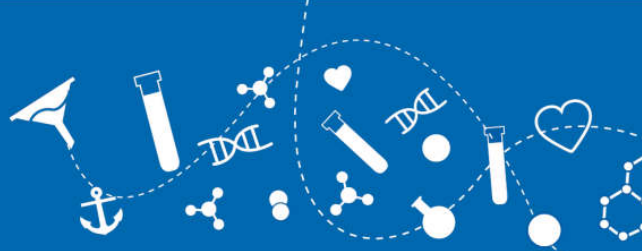
It is recommended to reconstitute the lyophilized SDF-1b in sterile 18 M $\Omega$ -cm H<sub>2</sub>O not less than 100  $\mu$ g/ml, which can then be further diluted to other aqueous solutions.

### Stability

Lyophilized SDF-1b, although stable at room temperature for 3 weeks, should be stored desiccated below -18°C. Upon reconstitution CXCL12 should be stored at 4°C between 2-7 days and for future use below -18°C. For long term storage it is recommended to add a carrier protein (0.1% HSA or BSA). Please prevent freeze-thaw cycles.

### Purity

Greater than 97.0% as determined by (a) Analysis by RP-HPLC, (b) Analysis by SDS-PAGE.



### **Amino Acid Sequence**

KPVSLSYRCP CRFFESHVAR ANVKHLKILN TPNCALQIVA RLKSNRQVC IDPKLKWIQE YLDKALNKRL KM

### **Activity**

The specific activity as determined by its ability to chemoattract human peripheral blood monocytes at 100 - 150 ng/ml corresponding to a specific activity of 6,667 - 10,000 IU/mg.

### **Usage**

**This product is offered by Biomol for research purposes only. Not for diagnostic purposes or human use. It may not be resold or used to manufacture commercial products without written approval of Biomol GmbH.**