



SZABO SCANDIC

Part of Europa Biosite

Produktinformation



Forschungsprodukte & Biochemikalien



Zellkultur & Verbrauchsmaterial



Diagnostik & molekulare Diagnostik



Laborgeräte & Service

Weitere Information auf den folgenden Seiten!
See the following pages for more information!



Lieferung & Zahlungsart

siehe unsere [Liefer- und Versandbedingungen](#)

Zuschläge

- Mindermengenzuschlag
- Trockeneiszuschlag
- Gefahrgutzuschlag
- Expressversand

SZABO-SCANDIC HandelsgmbH

Quellenstraße 110, A-1100 Wien

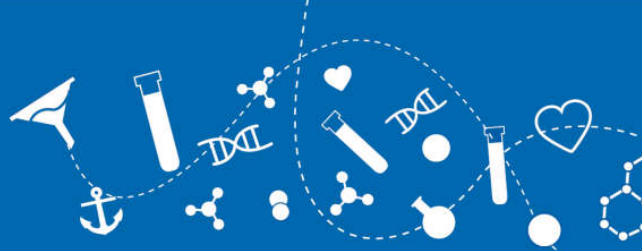
T. +43(0)1 489 3961-0

F. +43(0)1 489 3961-7

mail@szabo-scandic.com

www.szabo-scandic.com

[linkedin.com/company/szaboscandic](https://www.linkedin.com/company/szaboscandic) 



Exodus-2 (CCL21), mouse recombinant (rmExodus2)

Catalog No: 97348
Lot No: XXXXX
Source: *E. coli*
Synonyms: Small inducible cytokine A21, CCL21, Beta chemokine exodus-2, 6Ckine, Secondary lymphoid-tissue chemokine, SLC, chemokine (C-C motif) ligand 21, ECL, CKb9, TCA4, SCYA21, MGC34555

Background

Chemokine (C-C motif) ligand 21 (CCL21) is a small cytokine belonging to the CC chemokine family. This chemokine is also known as 6Ckine (because it has six conserved cysteine residues instead of the four cysteines typical to chemokines), exodus-2, and secondary lymphoid-tissue chemokine (SLC). CCL21 is expressed predominantly in the lymph nodes and, in contrast to other CC chemokines, is chemotactic for lymphocytes. The gene for CCL21 is located on human chromosome 9. CCL21 elicits its effects by binding to a cell surface chemokine receptor known as CCR7.

Description

Exodus-2 mouse recombinant produced in *E. coli* as a single, non-glycosylated, polypeptide chain containing 110 amino acids and having a molecular mass of 12 kDa. CCL21 is purified by proprietary chromatographic techniques.

Physical Appearance

Sterile filtered white lyophilized (freeze-dried) powder.

Formulation

Lyophilized from a concentrated (1 mg/ml) solution in water containing 20 mM phosphate buffer and 0.15 M NaCl pH 7.4.

Solubility

It is recommended to reconstitute the lyophilized Exodus2 in sterile 18 M Ω -cm H₂O not less than 100 μ g/ml, which can then be further diluted to other aqueous solutions.

Stability

Lyophilized Exodus-2, although stable at room temperature for 3 weeks, should be stored desiccated below -18°C. Upon reconstitution CCL21 should be stored at 4°C between 2-7 days and for future use below -18°C. For long term storage it is recommended to add a carrier protein (0.1% HSA or BSA). Please prevent freeze-thaw cycles.

Purity

Greater than 97.0% as determined by (a) Analysis by RP-HPLC, (b) Analysis by SDS-PAGE.

Amino Acid Sequence

SDGGGQDCCL KYSQKKIPYS IVRGYRKQEP SLGCPAIL FLPRKHSKPE LKANPEEGWV QNLMRRLDQP PAPGKQSPGC
RKNRGTSGSG KKGKSGKCK RTEQTQPSRG

Activity

Determined by its ability to chemoattract total murine T cell population using a concentration range of 10 - 100 ng/ml corresponding to a specific activity of 10,000 - 100,000 IU/mg.



Usage

This product is offered by Biomol for research purposes only. Not for diagnostic purposes or human use. It may not be resold or used to manufacture commercial products without written approval of Biomol GmbH.