



# SZABO SCANDIC

Part of Europa Biosite

## Produktinformation



Forschungsprodukte & Biochemikalien



Zellkultur & Verbrauchsmaterial



Diagnostik & molekulare Diagnostik



Laborgeräte & Service

Weitere Information auf den folgenden Seiten!  
See the following pages for more information!



### Lieferung & Zahlungsart

siehe unsere [Liefer- und Versandbedingungen](#)

### Zuschläge

- Mindermengenzuschlag
- Trockeneiszuschlag
- Gefahrgutzuschlag
- Expressversand

### SZABO-SCANDIC HandelsgmbH

Quellenstraße 110, A-1100 Wien

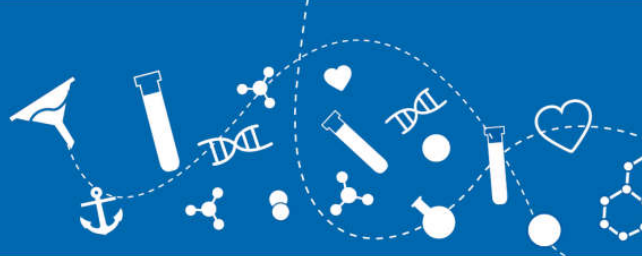
T. +43(0)1 489 3961-0

F. +43(0)1 489 3961-7

[mail@szabo-scandic.com](mailto:mail@szabo-scandic.com)

[www.szabo-scandic.com](http://www.szabo-scandic.com)

[linkedin.com/company/szaboscandic](https://www.linkedin.com/company/szaboscandic) 



## Macrophage Inflammatory Protein-3 alpha (CCL20), human recombinant (rHuMIP-3A)

**Catalog No:** 99847  
**Lot No:** XXXXX  
**Source:** *E. coli*  
**Synonyms:** S Small inducible cytokine A20 precursor, CCL20, Macrophage inflammatory protein 3 alpha, MIP-3-alpha, Liver and activation- regulated chemokine, CC chemokine LARC, Beta chemokine exodus-1, CKb4, LARC, ST38, MIP3A, MIP-3a, SCYA20

### Background

CCL-20 is a chemotactic factor that draws lymphocytes & neutrophils, rather than monocytes. MIP-3 alpha inhibits proliferation of myeloid progenitors in colony formation assays. MIP3A plays a role in the formation and function of the mucosal lymphoid tissues by attracting lymphocytes and dendritic cells towards epithelial cells. C-terminal processed forms have been shown to be equally chemotactically active for leukocytes. CCL-20 holds antibacterial activity *E. coli* atcc 25922 and *s.aureus* atcc 29213. CCL-20 gene transcription is activated by *H. pylori*, which activates NF-kappaB through intracellular signal pathway which involves I kappaB kinase and NF-kappaB-inducing kinase. MIP-3 alpha is involved in chemokine-mediated lymphocyte trafficking during gastric inflammation in *Helicobacter* infection. CCL-20 expression is involved in the recruitment of CD45RO-positive T cell subsets into the intestinal lamina propria. MIP-3A is in charge of the advancement of pulpal inflammation through the recruitment of C-C motif Receptor 6-expressing lymphocytes. Vaginal epithelial cells respond to factors present in semen by secreting MIP-3 alpha, which increases langerhans cells recruitment during HIV transmission.

### Description

Macrophage Inflammatory protein-3 alpha human recombinant produced in *E. coli* is a single, non-glycosylated, polypeptide chain containing 70 amino acids and having a molecular mass of 8 kDa. MIP-3a is purified by proprietary chromatographic techniques.

### Physical Appearance

Sterile filtered white lyophilized (freeze-dried) powder.

### Formulation

Lyophilized from a 0.2 µm filtered concentrated solution in 20 mM PB, pH 7.4, 150 mM NaCl.

### Solubility

It is recommended to reconstitute the lyophilized MIP-3a in sterile 18 MΩ-cm H<sub>2</sub>O not less than 100 µg/ml, which can then be further diluted to other aqueous solutions.

### Stability

Lyophilized MIP-3a, although stable at room temperature for 3 weeks, should be stored desiccated below -18°C. Upon reconstitution CCL20 should be stored at 4°C between 2-7 days and for future use below -18°C. For long term storage it is recommended to add a carrier protein (0.1% HSA or BSA). Please prevent freeze-thaw cycles.

### Purity

Greater than 97.0% as determined by (a) Analysis by RP-HPLC, (b) Analysis by SDS-PAGE.

### Amino Acid Sequence

ASNFDCCLGY TDRILHPKFI VGFTRQLANE GCDINAIIFH TKKKLSVCAN PKQTWVKYIV RLLSKKVKNM



**Activity**

Determined by its ability to chemoattract human T lymphocytes using a concentration range of 10.0 - 50.0 ng/ml, corresponding to a specific activity of 20,000 - 100,000 units/mg.

**Usage**

**This product is offered by Biomol for research purposes only. Not for diagnostic purposes or human use. It may not be resold or used to manufacture commercial products without written approval of Biomol GmbH.**