



# SZABO SCANDIC

Part of Europa Biosite

## Produktinformation



Forschungsprodukte & Biochemikalien



Zellkultur & Verbrauchsmaterial



Diagnostik & molekulare Diagnostik



Laborgeräte & Service

Weitere Information auf den folgenden Seiten!  
See the following pages for more information!



### Lieferung & Zahlungsart

siehe unsere [Liefer- und Versandbedingungen](#)

### Zuschläge

- Mindermengenzuschlag
- Trockeneiszuschlag
- Gefahrgutzuschlag
- Expressversand

### SZABO-SCANDIC HandelsgmbH

Quellenstraße 110, A-1100 Wien

T. +43(0)1 489 3961-0

F. +43(0)1 489 3961-7

[mail@szabo-scandic.com](mailto:mail@szabo-scandic.com)

[www.szabo-scandic.com](http://www.szabo-scandic.com)

[linkedin.com/company/szaboscandic](https://www.linkedin.com/company/szaboscandic) 

## Data Sheet

### **B7-1 (Woodchuck), Fc-fusion (Human), Avi-Tag, Biotin-labeled**

Woodchuck, Recombinant, Fc fusion protein,  
 C-terminal Avi-Tag, Biotin labeled

**Catalog #:** 100040

**Lot #:** 180405

**Conc.:** 0.86 mg/ml

**Formulated in:** 8 mM Phosphate, pH 7.4,  
 110 mM NaCl, 2.2 mM KCl, and 20%  
 glycerol.

**Stability:** At least 6 months at  $-80^{\circ}\text{C}$ . *Avoid freeze/thaw cycles. Protein may be diluted to  $\geq 100 \mu\text{g/ml}$  in PBS + glycerol and stored at  $-80^{\circ}\text{C}$ .*

**References:**

1. Byrum, J.N., Van Komen, J.S., Rodgers, W., *J. Immunol.* 2013 Sep 15; **191(6)**:3073-3081.
2. Legat, A., *et al.*, *Front Immunol.* 2013 Dec 19; **4**:455.

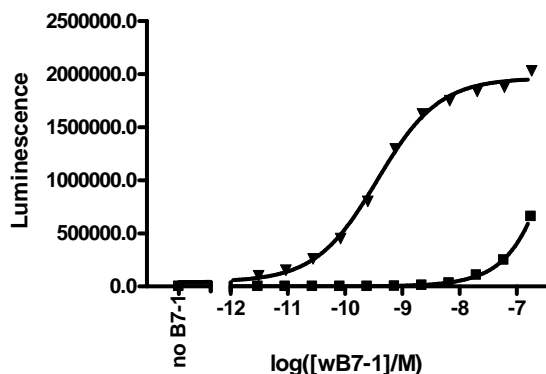
**Description:** Woodchuck B7-1, also known as CD80, with C-terminal Avi-Tag fused to the Fc-region of Human IgG1. a.a 30-237, expressed in a HEK293 cell expression system and enzymatically biotin-labeled using Avi-tag™ technology. MW = 52 kDa. This protein runs at a higher M.W. by SDS-PAGE due to glycosylation.

**Assay Conditions:** Reaction done similar to human CTLA4:B7-1[biotin] assay kit (BPS Catalog # 72009) protocol. Buffer is PBS with 0.1% BSA. Blocking buffer is Superblock + 0.05% Tween-20. The coat protein, woodchuck CTLA4 (wCTLA4), was added ON at 4 deg (various concentrations as indicated). Binding reaction initiated with addition of woodchuck B7-1-biotin (wB7-1-biotin) for 2h at RT. Binding was detected using Strep-HRP generated luminescence.

**Applications:** Useful for the study of enzyme kinetics, screening inhibitors, and selectivity profiling.

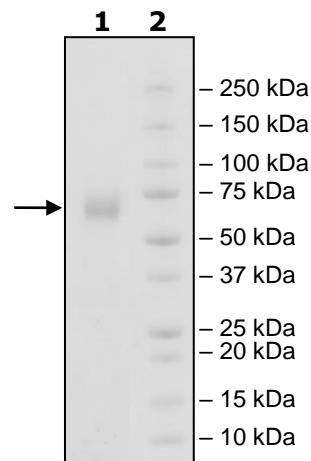
### Quality Assurance

**Woodchuck CTLA4: B7-1 Interaction**



**4-20% SDS-PAGE  
 Coomassie staining**

**Lane 1:**  
 B7-1 (Woodchuck)  
**Lane 2:**  
 Protein Marker  
**MW:**  
 52kDa + glycans  
**Purity:**  $\geq 90\%$



OUR PRODUCTS ARE FOR RESEARCH USE ONLY. NOT FOR DIAGNOSTIC OR THERAPEUTIC USE.

To place your order, please contact us by Phone **1.858.829.3082** Fax **1.858.481.8694**  
 Or you can Email us at: [info@bpsbioscience.com](mailto:info@bpsbioscience.com)  
 Please visit our website at: [www.bpsbioscience.com](http://www.bpsbioscience.com)