



SZABO SCANDIC

Part of Europa Biosite

Produktinformation



Forschungsprodukte & Biochemikalien



Zellkultur & Verbrauchsmaterial



Diagnostik & molekulare Diagnostik



Laborgeräte & Service

Weitere Information auf den folgenden Seiten!
See the following pages for more information!



Lieferung & Zahlungsart

siehe unsere [Liefer- und Versandbedingungen](#)

Zuschläge

- Mindermengenzuschlag
- Trockeneiszuschlag
- Gefahrgutzuschlag
- Expressversand

SZABO-SCANDIC HandelsgmbH

Quellenstraße 110, A-1100 Wien

T. +43(0)1 489 3961-0

F. +43(0)1 489 3961-7

mail@szabo-scandic.com

www.szabo-scandic.com

[linkedin.com/company/szaboscandic](https://www.linkedin.com/company/szaboscandic) 

Data Sheet

BCL2A1, His-Tag

Human, Recombinant, C-terminal His-tag

Catalog #: 100077

Lot #: 180713-2 **Conc.:** 0.27 mg/ml

Formulated in: 40 mM Tris-HCl, pH 8.0, 110 mM NaCl, 2.2 mM KCl, 0.04% Tween-20, 20% glycerol, 3mM DTT and 200mM Imidazole

Stability: At least 6 months at -80°C . Avoid freeze/thaw cycles. Storing diluted enzyme is not recommended, if necessary, use carrier protein (BSA 0.1-0.5%)

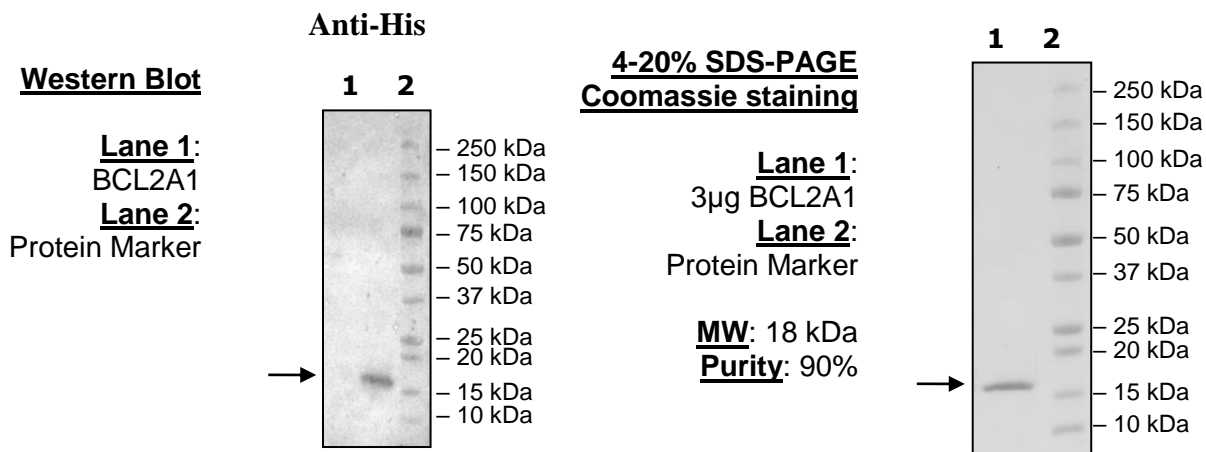
References:

1. Volger, G. *et al.*, *Blood*. Nov; **113**: 4403-4413 (2009).
2. Akatsuka, Y. *et al.*, *Journal of Experimental Medicine*. **197(11)**: 1489 (2003).

Description: Human BCL2A1, also known as BCL2L5, BFL1, HBPA1, and BCL-2-like-protein 5, a. a. 1-152, with C-terminal His-tag, GenBank Accession No. NM_004049, MW = 18 kDa, expressed in an *E. coli* expression system.

Application: Useful as a positive control for Western blot studies.

Quality Assurance



OUR PRODUCTS ARE FOR RESEARCH USE ONLY. NOT FOR DIAGNOSTIC OR THERAPEUTIC USE.

To place your order, please contact us by Phone **1.858.829.3082** Fax **1.858.481.8694**
 Or you can Email us at: info@bpsbioscience.com
 Please visit our website at: www.bpsbioscience.com