



# SZABO SCANDIC

Part of Europa Biosite

## Produktinformation



Forschungsprodukte & Biochemikalien



Zellkultur & Verbrauchsmaterial



Diagnostik & molekulare Diagnostik



Laborgeräte & Service

Weitere Information auf den folgenden Seiten!  
See the following pages for more information!



### Lieferung & Zahlungsart

siehe unsere [Liefer- und Versandbedingungen](#)

### Zuschläge

- Mindermengenzuschlag
- Trockeneiszuschlag
- Gefahrgutzuschlag
- Expressversand

### SZABO-SCANDIC HandelsgmbH

Quellenstraße 110, A-1100 Wien

T. +43(0)1 489 3961-0

F. +43(0)1 489 3961-7

[mail@szabo-scandic.com](mailto:mail@szabo-scandic.com)

[www.szabo-scandic.com](http://www.szabo-scandic.com)

[linkedin.com/company/szaboscandic](https://www.linkedin.com/company/szaboscandic)

## Data Sheet

### **BCL2L10, His-Tag**

Human, Recombinant, C-terminal His-tag

**Catalog #:** 100080

**Lot #:** 180605      **Conc.:** 0.33 mg/ml

**Formulated in:** 40 mM Tris-HCl, pH 8.0, 110 mM NaCl, 2.2 mM KCl, 0.04% Tween-20, 20% glycerol, 3mM DTT and 133mM Imidazole

**Stability:** At least 6 months at  $-80^{\circ}\text{C}$ . Avoid freeze/thaw cycles. Storing diluted enzyme is not recommended, if necessary, use carrier protein (BSA 0.1-0.5%)

**References:**

1. Chulzeau T. *et al.*, *Oncotarget*. Apr; **3(4)**: 490-501 (2012).
2. Guillemin Y. *et al.*, *Journal of Molecular Medicine*. 87(9): 923-940 (2009).

**Description:** Human BCL2L10, also known as Bcl-2-like protein 10, and BCL-B, a. a. 1-175, with C-terminal His-tag, GenBank Accession No. NM\_020396, MW = 21 kDa, expressed in an *E. coli* expression system.

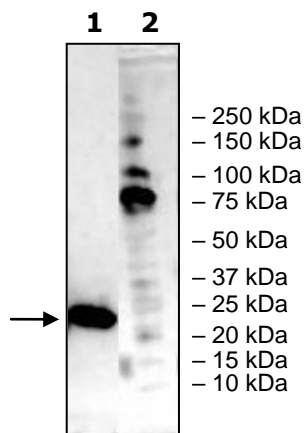
**Application:** Useful as a positive control for western blot studies.

---

## Quality Assurance

**Western Blot**

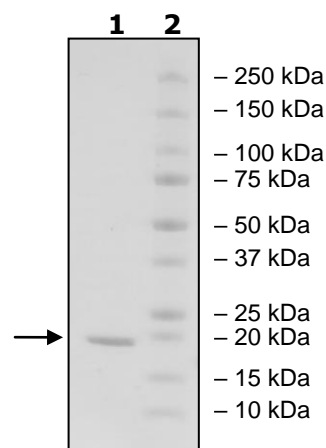
**Lane 1:**  
BCL2L10  
**Lane 2:**  
Protein Marker



**4-20% SDS-PAGE  
Coomassie staining**

**Lane 1:**  
2µg BCL2L10  
**Lane 2:**  
Protein Marker

**MW:** 21 kDa  
**Purity:** 80%



OUR PRODUCTS ARE FOR RESEARCH USE ONLY. NOT FOR DIAGNOSTIC OR THERAPEUTIC USE.

To place your order, please contact us by Phone **1.858.829.3082** Fax **1.858.481.8694**  
 Or you can Email us at: [info@bpsbioscience.com](mailto:info@bpsbioscience.com)  
 Please visit our website at: [www.bpsbioscience.com](http://www.bpsbioscience.com)