



SZABO SCANDIC

Part of Europa Biosite

Produktinformation



Forschungsprodukte & Biochemikalien



Zellkultur & Verbrauchsmaterial



Diagnostik & molekulare Diagnostik



Laborgeräte & Service

Weitere Information auf den folgenden Seiten!
See the following pages for more information!



Lieferung & Zahlungsart

siehe unsere [Liefer- und Versandbedingungen](#)

Zuschläge

- Mindermengenzuschlag
- Trockeneiszuschlag
- Gefahrgutzuschlag
- Expressversand

SZABO-SCANDIC HandelsgmbH

Quellenstraße 110, A-1100 Wien

T. +43(0)1 489 3961-0

F. +43(0)1 489 3961-7

mail@szabo-scandic.com

www.szabo-scandic.com

[linkedin.com/company/szaboscandic](https://www.linkedin.com/company/szaboscandic) 

Data Sheet

BCL2L2, His-Tag

Human, Recombinant, C-terminal His-tag

Catalog #: 100091

Lot #: 180601-2 **Conc.:** 0.73 mg/ml

Formulated in: 40 mM Tris-HCl, pH 8.0, 110 mM NaCl, 2.2 mM KCl, 0.04% Tween-20, 20% glycerol, 3mM DTT and Imidazole

Stability: At least 6 months at -80°C . Avoid freeze/thaw cycles. Storing diluted enzyme is not recommended, if necessary, use carrier protein (BSA 0.1-0.5%)

References:

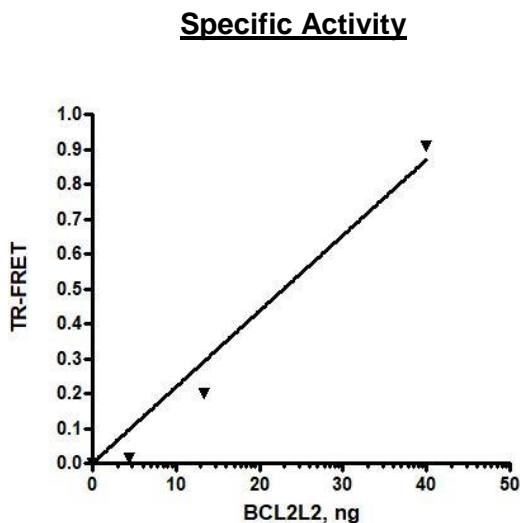
1. Shi, G. *et al.*, *Experimental Brain Research*. Nov; **216(2)** : 225-230 (2012).
2. Qu J. *et al.*, *Journal of Cellular Physiology*. 230(3): 1868-1878 (2018).

Description: Human BCL2L2, also known as Bcl-2-like protein 2, and BCL2 like 2, a. a. 1-172, with C-terminal His-tag, GenBank Accession No. NM_004050, MW = 20 kDa, expressed in an *E. coli* expression system.

Assay Conditions: Add 20-40 ng of BCL2L2 to 20 μl reaction mix containing 130 nM MCL1 substrate, anti-His Tb-labeled donor, and dye-labeled acceptor. Incubate 1h at room temperature. Read TR-FRET ($\lambda_{\text{exc}}=340$ nm, $\lambda_{\text{em1}}=620$ nm and $\lambda_{\text{em2}}=665$ nm).

Application: Useful for the study of enzyme kinetics, screening inhibitors, selectivity profiling, and as a positive control for western blot studies.

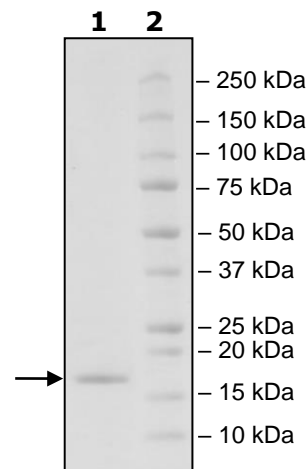
Quality Assurance



4-20% SDS-PAGE
Coomassie staining

Lane 1:
2 μg BCL2L2
Lane 2:
Protein Marker

MW: 20 kDa
Purity: 90%



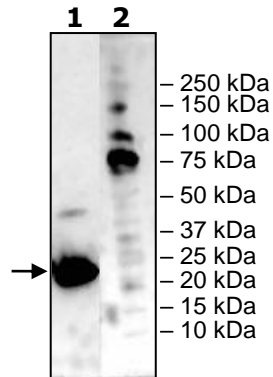
OUR PRODUCTS ARE FOR RESEARCH USE ONLY. NOT FOR DIAGNOSTIC OR THERAPEUTIC USE.

To place your order, please contact us by Phone **1.858.829.3082** Fax **1.858.481.8694**
 Or you can Email us at: info@bpsbioscience.com
 Please visit our website at: www.bpsbioscience.com

Western Blot

Lane 1:
BCL2L2

Lane 2:
Protein Marker



OUR PRODUCTS ARE FOR RESEARCH USE ONLY. NOT FOR DIAGNOSTIC OR THERAPEUTIC USE.

To place your order, please contact us by Phone **1.858.829.3082** Fax **1.858.481.8694**
Or you can Email us at: info@bpsbioscience.com
Please visit our website at: www.bpsbioscience.com