



SZABO SCANDIC

Part of Europa Biosite

Produktinformation



Forschungsprodukte & Biochemikalien



Zellkultur & Verbrauchsmaterial



Diagnostik & molekulare Diagnostik



Laborgeräte & Service

Weitere Information auf den folgenden Seiten!
See the following pages for more information!



Lieferung & Zahlungsart

siehe unsere [Liefer- und Versandbedingungen](#)

Zuschläge

- Mindermengenzuschlag
- Trockeneiszuschlag
- Gefahrgutzuschlag
- Expressversand

SZABO-SCANDIC HandelsgmbH

Quellenstraße 110, A-1100 Wien

T. +43(0)1 489 3961-0

F. +43(0)1 489 3961-7

mail@szabo-scandic.com

www.szabo-scandic.com

[linkedin.com/company/szaboscandic](https://www.linkedin.com/company/szaboscandic) 

Data Sheet

METTL3/METTL14 Protein Complex, FLAG-Tag, His-Tag

Human, Recombinant, METTL3: N-terminal FLAG-tag, METTL14: N-terminal His-Tag

Catalog #: 100105

Lot #: 180627-H **Conc.:** 0.39 mg/ml

Formulated in: 40 mM Tris-HCl, pH 8.0, 110 mM NaCl, 2.2 mM KCl, 20% glycerol, 3mM DTT, 100ug/ml flag peptide

Stability: At least 6 months at -80°C . Avoid freeze/thaw cycles. For optimal storage, aliquot target into smaller quantities after centrifugation and store at recommended temperature.

References:

1. Liu J. *et al. Nat. Chem. Biol.* 2014. **10**: 93–95
2. Wang X. *et al. Nature.* 2016. **534**:575-578

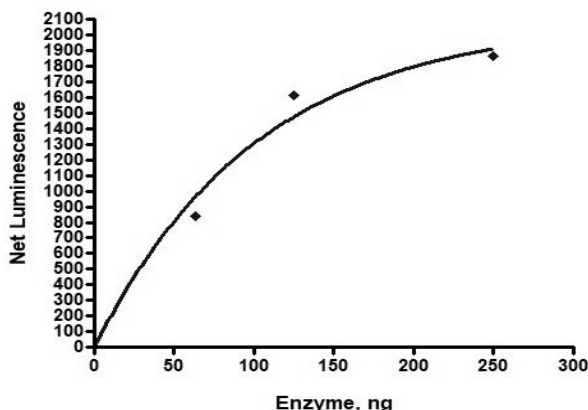
Description: Complex of Human Methyltransferase-like 3 (METTL3), GenBank Accession No. NM_019852, a.a. 2-580 (end) with N-terminal FLAG-tag, MW = 66 kDa and Methyltransferase-like 14 (METTL14), Genbank Accession No. NM_020961 a.a. 2-456 (end), with N-terminal His-tag, MW = 53 kDa, co-expressed by baculovirus in Sf9 insect cells.

Assay Conditions: Add 50 μl reaction mix containing S-adenosylmethionine, METTL enzyme, and METTL buffer to wells coated with the substrate. Incubate overnight at room temperature. Add antibody against methylated adenosine, incubate 1 hr. Then, add secondary HRP-labeled antibody and incubate 30 min. Finally, add HRP chemiluminescent substrates and read luminescence.

Application: Useful for the study of enzyme kinetics, screening inhibitors, and selectivity profiling.

Quality Assurance

Specific Activity



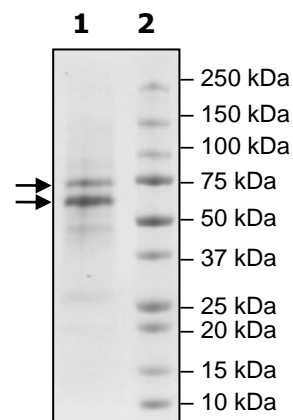
4-20% SDS-PAGE Coomassie staining

Lane 1:
METTL3/METTL14

Lane 2:
Protein Marker

Purity: $\geq 70\%$

MW:
METTL3: 66 kDa
METTL14: 53 kDa



OUR PRODUCTS ARE FOR RESEARCH USE ONLY. NOT FOR DIAGNOSTIC OR THERAPEUTIC USE.

To place your order, please contact us by Phone **1.858.829.3082** Fax **1.858.481.8694**

Or you can Email us at: info@bpsbioscience.com

Please visit our website at: www.bpsbioscience.com