



# SZABO SCANDIC

Part of Europa Biosite

## Produktinformation



Forschungsprodukte & Biochemikalien



Zellkultur & Verbrauchsmaterial



Diagnostik & molekulare Diagnostik



Laborgeräte & Service

Weitere Information auf den folgenden Seiten!  
See the following pages for more information!



### Lieferung & Zahlungsart

siehe unsere [Liefer- und Versandbedingungen](#)

### Zuschläge

- Mindermengenzuschlag
- Trockeneiszuschlag
- Gefahrgutzuschlag
- Expressversand

### SZABO-SCANDIC HandelsgmbH

Quellenstraße 110, A-1100 Wien

T. +43(0)1 489 3961-0

F. +43(0)1 489 3961-7

[mail@szabo-scandic.com](mailto:mail@szabo-scandic.com)

[www.szabo-scandic.com](http://www.szabo-scandic.com)

[linkedin.com/company/szaboscandic](https://www.linkedin.com/company/szaboscandic) 

## Data Sheet

### IL-2 (R58A, F62A, Y65A, E82A, C145A) (Woodchuck)

Woodchuck, Recombinant

**Catalog #:** 100156

**Lot #:** 180831

**Conc.:** 0.37 mg/ml

**Formulated in:** 10 mM Na phosphate  
pH7.4, 138 mM NaCl, 2.75 mM KCl

**Stability:** At least 6 months at  $-80^{\circ}\text{C}$ . Avoid  
freeze/thaw cycles.

#### References:

1. Shevach EM. Trends Immunol. 2012  
Dec,33(12):626-32.
2. Dooms H, Abbas AK. Eur J Immunol.  
2010 Jun,40(6):1538-40.

#### Description:

Woodchuck IL-2, also known as interleukin 2, (Genbank Accession No. NM\_000586), a.a. 21-154(end), with R58A, F62A, Y65A, E82A, and C145A mutations, expressed in an E.coli expression system. MW = 15 kDa.

## Quality Assurance

#### 4-20% SDS-PAGE Coomassie staining

Lane 1:

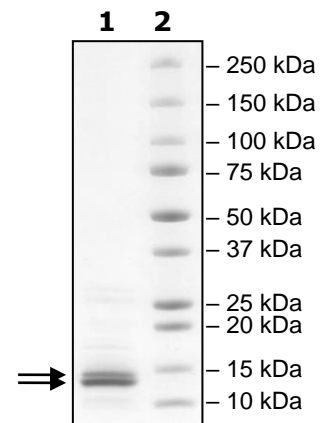
2 $\mu\text{g}$  IL-2

Lane 2:

Protein Marker

MW: 15 kDa

Purity:  $\geq 90\%$



OUR PRODUCTS ARE FOR RESEARCH USE ONLY. NOT FOR DIAGNOSTIC OR THERAPEUTIC USE.

To place your order, please contact us by Phone **1.858.829.3082** Fax **1.858.481.8694**

Or you can Email us at: [info@bpsbioscience.com](mailto:info@bpsbioscience.com)

Please visit our website at: [www.bpsbioscience.com](http://www.bpsbioscience.com)