



SZABO SCANDIC

Part of Europa Biosite

Produktinformation



Forschungsprodukte & Biochemikalien



Zellkultur & Verbrauchsmaterial



Diagnostik & molekulare Diagnostik



Laborgeräte & Service

Weitere Information auf den folgenden Seiten!
See the following pages for more information!



Lieferung & Zahlungsart

siehe unsere [Liefer- und Versandbedingungen](#)

Zuschläge

- Mindermengenzuschlag
- Trockeneiszuschlag
- Gefahrgutzuschlag
- Expressversand

SZABO-SCANDIC HandelsgmbH

Quellenstraße 110, A-1100 Wien

T. +43(0)1 489 3961-0

F. +43(0)1 489 3961-7

mail@szabo-scandic.com

www.szabo-scandic.com

[linkedin.com/company/szaboscandic](https://www.linkedin.com/company/szaboscandic) 

Data Sheet

IL-2 (R58D, K63E, E81R, C146A) (Woodchuck)

Woodchuck, Recombinant

Catalog #: 100157

Lot #: 180831

Conc.: 0.56 mg/ml

Formulated in: 10 mM Na phosphate
pH7.4, 138 mM NaCl, 2.75 mM KCl.

Stability: At least 6 months at -80°C . Avoid
freeze/thaw cycles.

References:

1. Shevach EM. Trends Immunol. 2012 Dec,33(12):626-32.
2. Dooms H, Abbas AK. Eur J Immunol. 2010 Jun,40(6):1538-40.

Description:

Woodchuck IL-2, also known as interleukin 2, (Genbank Accession No. NM_000586), a.a. 21-154(end), with R58D, K63E, E81R, and C146A mutations, expressed in an E.coli expression system. MW = 15 kDa.

Quality Assurance

4-20% SDS-PAGE Coomassie staining

Lane 1:

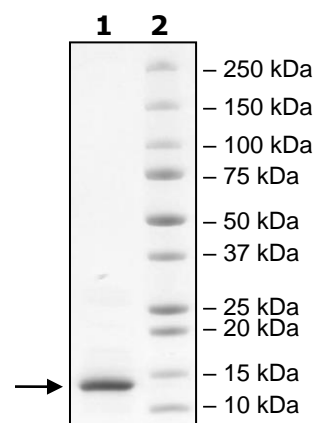
2 μg IL-2

Lane 2:

Protein Marker

MW: 15 kDa

Purity: $\geq 90\%$



OUR PRODUCTS ARE FOR RESEARCH USE ONLY. NOT FOR DIAGNOSTIC OR THERAPEUTIC USE.

To place your order, please contact us by Phone **1.858.829.3082** Fax **1.858.481.8694**

Or you can Email us at: info@bpsbioscience.com

Please visit our website at: www.bpsbioscience.com