



# SZABO SCANDIC

Part of Europa Biosite

## Produktinformation



Forschungsprodukte & Biochemikalien



Zellkultur & Verbrauchsmaterial



Diagnostik & molekulare Diagnostik



Laborgeräte & Service

Weitere Information auf den folgenden Seiten!  
See the following pages for more information!



### Lieferung & Zahlungsart

siehe unsere [Liefer- und Versandbedingungen](#)

### Zuschläge

- Mindermengenzuschlag
- Trockeneiszuschlag
- Gefahrgutzuschlag
- Expressversand

### SZABO-SCANDIC HandelsgmbH

Quellenstraße 110, A-1100 Wien

T. +43(0)1 489 3961-0

F. +43(0)1 489 3961-7

[mail@szabo-scandic.com](mailto:mail@szabo-scandic.com)

[www.szabo-scandic.com](http://www.szabo-scandic.com)

[linkedin.com/company/szaboscandic](https://www.linkedin.com/company/szaboscandic) 

## Data Sheet

### Mesothelin, Avi-His-Tag

Human, Recombinant, C-terminal Avi-His-tag

**Catalog#:** 100290

**Lot#:** 190220-1

**Conc.:** 1.91 mg/ml

**Formulated in:** 8 mM phosphate, pH 7.4, 110 mM NaCl, 2.2 mM KCl, and 20% glycerol.

**Stability:** At least 6 months at  $-80^{\circ}\text{C}$ . Avoid freeze/thaw cycles.

#### Description:

Human Mesothelin, also known as MSLN, MPF, SMRP, GenBank Accession No. NM\_005823, a.a. 296–580 with C-terminal Avi-His-tag, expressed in a HEK293 cell expression system. MW = 35 kDa. This protein runs at a higher MW by SDS-PAGE due to glycosylation.

#### References:

1. Robinson, B, W.S. *et al.*, *The Lancet*. 2003; **362(9396)**: 1612-1616.
2. Chang, K. *et al.*, *PNAS*. 1996; **93(1)**: 136-140.

---

### Quality Assurance

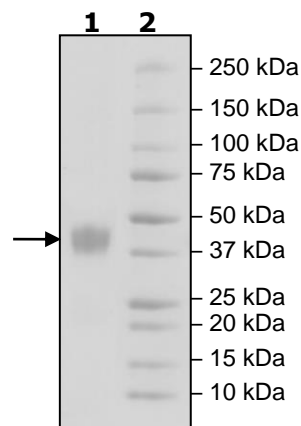
#### 4-20% SDS-PAGE Coomassie staining

**Lane 1:**  
4  $\mu\text{g}$  Mesothelin

**Lane 2:**  
Protein Marker

**MW:**  
35 kDa+glycans

**Purity:**  $\geq 90\%$



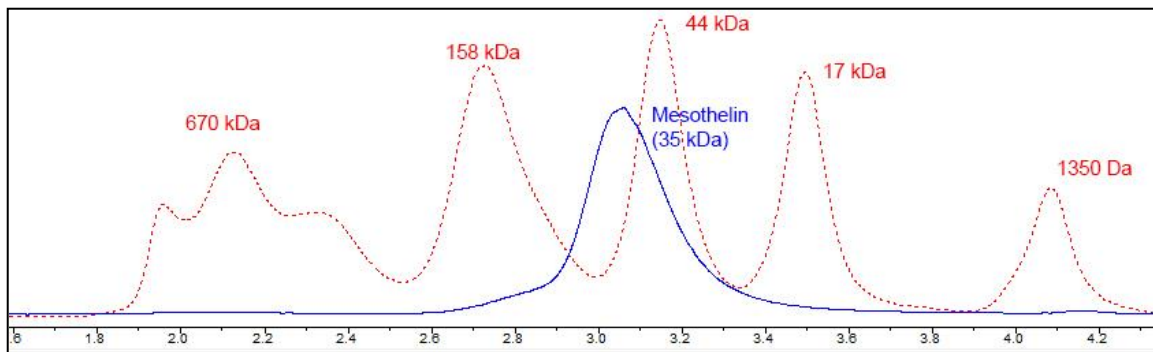
OUR PRODUCTS ARE FOR RESEARCH USE ONLY. NOT FOR DIAGNOSTIC OR THERAPEUTIC USE.

To place your order, please contact us by Phone **1.858.202.1401** Fax **1.858.481.8694**

Or you can Email us at: [info@bpsbioscience.com](mailto:info@bpsbioscience.com)

Please visit our website at: [www.bpsbioscience.com](http://www.bpsbioscience.com)

**Gel Filtration**



<10% Aggregation

OUR PRODUCTS ARE FOR RESEARCH USE ONLY. NOT FOR DIAGNOSTIC OR THERAPEUTIC USE.

To place your order, please contact us by Phone **1.858.202.1401** Fax **1.858.481.8694**  
Or you can Email us at: [info@bpsbioscience.com](mailto:info@bpsbioscience.com)  
Please visit our website at: [www.bpsbioscience.com](http://www.bpsbioscience.com)