



SZABO SCANDIC

Part of Europa Biosite

Produktinformation



Forschungsprodukte & Biochemikalien



Zellkultur & Verbrauchsmaterial



Diagnostik & molekulare Diagnostik



Laborgeräte & Service

Weitere Information auf den folgenden Seiten!
See the following pages for more information!



Lieferung & Zahlungsart

siehe unsere [Liefer- und Versandbedingungen](#)

Zuschläge

- Mindermengenzuschlag
- Trockeneiszuschlag
- Gefahrgutzuschlag
- Expressversand

SZABO-SCANDIC HandelsgmbH

Quellenstraße 110, A-1100 Wien

T. +43(0)1 489 3961-0

F. +43(0)1 489 3961-7

mail@szabo-scandic.com

www.szabo-scandic.com

[linkedin.com/company/szaboscandic](https://www.linkedin.com/company/szaboscandic) 

Data Sheet

MLL3/WDR5/Ash2L/RbBP5/DPY30 Complex

Human, Recombinant
Catalog #: 100323
Lot #: 190318 **Conc.:** 0.58 mg/ml

Formulated in: 40 mM Tris-HCl pH 8.0, 110 mM NaCl, 2.2 mM KCl, 0.04% Tween-20, 20% glycerol, 200 mM imidazole, 1 μ M ZnCl₂, 1mM TCEP.

Stability: At least 6 months at -80°C .
 Avoid freeze/thaw cycles.

References:

1. Patel, A., *et al.*, *J. Biol. Chem.* 2009; **284(36)**: 24242-24256.
2. Mohan, M., *et al.*, *Nat. Rev. Cancer* 2010; **10(10)**: 721-728.

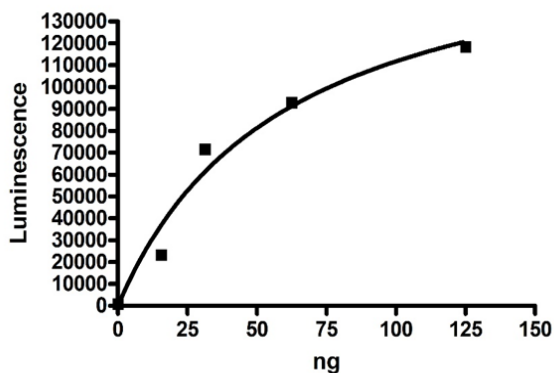
Description: MLL3/WARD complex of human **MLL3** (GenBank Accession No. NM_170606) a.a. 4689-4911(end) with N-terminal His-tag and MW= 27 kDa, human **WDR5** (GenBank Accession No. NM_017588), a.a. 2-334(end) with N-terminal His-tag and MW= 37 kDa, human **Ash2L** (GenBank Accession No. NM_001105214), a.a. 2-534(end) with N-terminal His-tag and MW= 61 kDa, human **RbBP5** (GenBank Accession No. NM_005057), a.a. 2-538(end) with N-terminal His-tag and MW= 60 kDa, and human **DPY30** (GenBank Accession No. NM_032574) a.a. 2-99(end) with N-terminal His-tag and MW=12 kDa individually expressed in an *E. coli* expression system.

Specific Activity: 0.015 pmole/min/ μ g
 Assay Conditions: H3, 1-21-Biotin was coated onto a neutravidin plate at 0.4 μ g/ml. Reaction mixture contained 1X HMT buffer 1 (50 mM Tris buffer pH 8.8, 5 mM MgCl₂, 4 mM DTT, 0.05% Tween-20), various amounts of S-adenosylmethionine (40 μ M for SA determination, 20 μ M for inhibition), and/or various amounts of MLL3 Complex—incubated for 1-hour at room temperature. Followed by 1-hour incubation with primary antibody against 3MeK4 Histone 3 (cell signaling #9751) and 30-minute incubation with α -rabbit secondary antibody (abcam). Luminescence was developed with ELISA ECL Substrates A and B (BPS #79670).

Application(s): Useful for the study of enzyme kinetics, screening inhibitors, and selectivity profiling.

Quality Assurance

Specific Activity

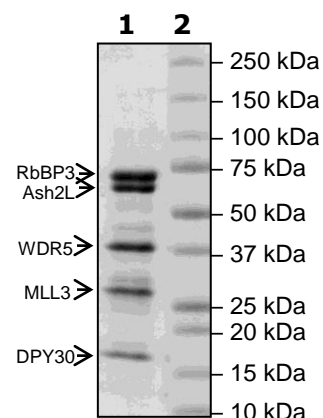


4-20% SDS-PAGE
Coomassie staining

Lane 1:
 8 μ g MLL3-WARD
Lane 2:
 Protein Marker

MW: RbBP5: 60 kDa
 Ash2L: 61 kDa
 WDR5: 37 kDa
 MLL3: 27 kDa
 DPY30: 12 kDa

Purity: $\geq 85\%$



OUR PRODUCTS ARE FOR RESEARCH USE ONLY. NOT FOR DIAGNOSTIC OR THERAPEUTIC USE.

To place your order, please contact us by Phone **1.858.202.1401** Fax **1.858.481.8694**

Or you can Email us at: info@bpsbioscience.com

Please visit our website at: www.bpsbioscience.com