



SZABO SCANDIC

Part of Europa Biosite

Produktinformation



Forschungsprodukte & Biochemikalien



Zellkultur & Verbrauchsmaterial



Diagnostik & molekulare Diagnostik



Laborgeräte & Service

Weitere Information auf den folgenden Seiten!
See the following pages for more information!



Lieferung & Zahlungsart

siehe unsere [Liefer- und Versandbedingungen](#)

Zuschläge

- Mindermengenzuschlag
- Trockeneiszuschlag
- Gefahrgutzuschlag
- Expressversand

SZABO-SCANDIC HandelsgmbH

Quellenstraße 110, A-1100 Wien

T. +43(0)1 489 3961-0

F. +43(0)1 489 3961-7

mail@szabo-scandic.com

www.szabo-scandic.com

[linkedin.com/company/szaboscandic](https://www.linkedin.com/company/szaboscandic) 

Data Sheet

Cereblon/DDB1/Cul4A/Rbx1 Complex

Human, Recombinant
Catalog #: 100329
Lot #: 190422 **Conc.:** 0.29 mg/ml

Formulated in: : 40 mM Tris-HCl, pH 8.0, 110 mM NaCl, 2.2 mM KCl, 0.04% Tween-20 and 20% Glycerol.

Stability: At least 6 months at -80°C .
 Avoid freeze/thaw cycles.

References:

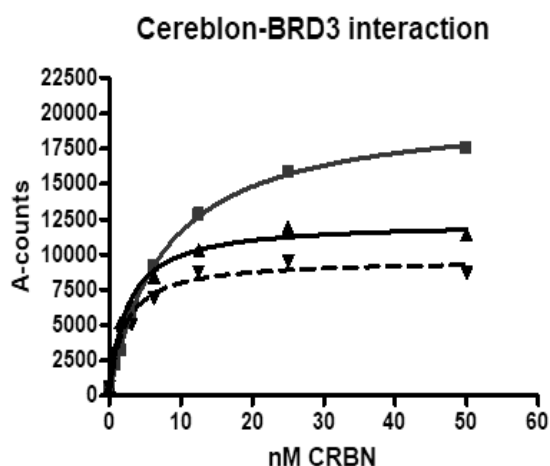
1. Gang, Lu., *et al.*, *Science*. 2014; **343(6168)**: 305-309.
2. Zhu, Y.X., *et al.*, *Blood*. 2011; **118**: 4771-4779.

Description: Cereblon/DDB1/Cul4A/Rbx1 complex of human **Cereblon** (GenBank Accession No. NM_016302) a.a. 2-442(end) with N-terminal FLAG-tag and MW= 51 kDa, human **DDB1** (GenBank Accession No. NM_001923), a.a. 1-1140(end) with N-terminal FLAG-tag and MW= 128 kDa, human **Cul4A** (GenBank Accession No. NM_003589), a.a. 2-759(end) with N-terminal His-tag and MW= 87 kDa, human **Rbx1** (GenBank Accession No. NM_014248), a.a. 2-108(end) with N-terminal His-tag and MW= 13 kDa, co-expressed in a HEK293 expression system.

Assay Conditions: This assay was completed using AlphaScreen™ technology using FLAG-acceptor beads and GSH-donor beads.

Applications: Useful for the study of enzyme kinetics, screening inhibitors, and selectivity profiling.

Quality Assurance

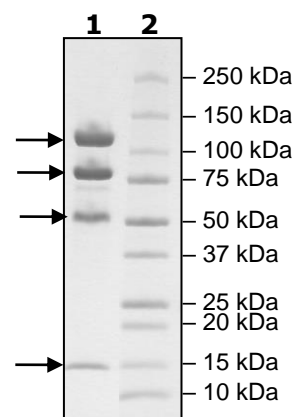


**4-20% SDS-PAGE
 Coomassie staining**

Lane 1:
 8 µg 4-complex

Lane 2:
 Protein Marker

MW: DDB1 128 kDa
 Cul4A 88 kDa
 Cereblon 51 kDa
 Rbx1 13 kDa



Purity: ≥90%