



SZABO SCANDIC

Part of Europa Biosite

Produktinformation



Forschungsprodukte & Biochemikalien



Zellkultur & Verbrauchsmaterial



Diagnostik & molekulare Diagnostik



Laborgeräte & Service

Weitere Information auf den folgenden Seiten!
See the following pages for more information!



Lieferung & Zahlungsart

siehe unsere [Liefer- und Versandbedingungen](#)

Zuschläge

- Mindermengenzuschlag
- Trockeneiszuschlag
- Gefahrgutzuschlag
- Expressversand

SZABO-SCANDIC HandelsgmbH

Quellenstraße 110, A-1100 Wien

T. +43(0)1 489 3961-0

F. +43(0)1 489 3961-7

mail@szabo-scandic.com

www.szabo-scandic.com

[linkedin.com/company/szaboscandic](https://www.linkedin.com/company/szaboscandic) 

Data Sheet

CBLC, FLAG-Tag

Human, Recombinant, N-terminal FLAG-tag

Catalog #: 100332

Lot #: 190401

Conc.: 0.15 mg/ml

Formulated in: 40 mM Tris-HCl, pH 8.0, 110 mM NaCl, 2.2 mM KCl, 0.04% Tween-20, 20% Glycerol and 100 µg/mL FLAG peptide.

Stability: At least 6 months at -80°C. Avoid freeze/thaw cycles.

References:

1. Keane, M.M., *Oncogene*, 1999 June; **18**: 3365-3375.
2. Griffiths, E.K., *Molec. and Cellular Bio.* 2003; Oct. **23(21)**:7708-7718

Description:

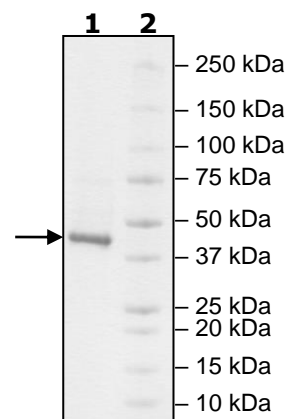
Human CBLC, also known as CBL-3, Cbl Proto-Oncogene C, Signal Transduction Protein CBL-C, and Cbl Proto-Oncogene C, E3 Ubiquitin Protein Ligase, Genbank Accession No. NM_012116, a.a. 11-404 with N-terminal FLAG-tag, expressed in a HEK293 expression system. MW = 45 kDa.

Quality Assurance

**4-20% SDS-PAGE
Coomassie staining**

Lane 1:
2 µg CBLC
Lane 2:
Protein Marker

MW: 45 kDa
Purity: ≥90%



OUR PRODUCTS ARE FOR RESEARCH USE ONLY. NOT FOR DIAGNOSTIC OR THERAPEUTIC USE.

To place your order, please contact us by Phone **1.858.202.1401** Fax **1.858.481.8694**

Or you can Email us at: info@bpsbioscience.com

Please visit our website at: www.bpsbioscience.com