



SZABO SCANDIC

Part of Europa Biosite

Produktinformation



Forschungsprodukte & Biochemikalien



Zellkultur & Verbrauchsmaterial



Diagnostik & molekulare Diagnostik



Laborgeräte & Service

Weitere Information auf den folgenden Seiten!
See the following pages for more information!



Lieferung & Zahlungsart

siehe unsere [Liefer- und Versandbedingungen](#)

Zuschläge

- Mindermengenzuschlag
- Trockeneiszuschlag
- Gefahrgutzuschlag
- Expressversand

SZABO-SCANDIC HandelsgmbH

Quellenstraße 110, A-1100 Wien

T. +43(0)1 489 3961-0

F. +43(0)1 489 3961-7

mail@szabo-scandic.com

www.szabo-scandic.com

[linkedin.com/company/szaboscandic](https://www.linkedin.com/company/szaboscandic) 

Data Sheet

LATS2, GST-Tag

Human, Recombinant, N-terminal GST-tag

Catalog #: 100353

Lot #: 190628-G1 **Conc.:** 0.49 mg/mL

Formulated in: 40 mM Tris-HCl, pH 8.0,
110 mM NaCl, 2.2 mM KCl, 3 mM DTT,
0.04% Tween20, 20% glycerol.

Stability: At least 6 months at -80°C . Avoid
freeze/thaw cycles.

References:

1. Yunfang, L., *et al.*, *Oncogene*. 2003;
(22):4398-4405.
2. Murakami, H., *et al.*, *Cancer Research*.
2011; 71(3):873-883

Description: Human Large Tumor
Suppressor Kinase 2 (LATS2) protein, also
known as KPM and LATS, GenBank
Accession No. NM_014572, a.a 480-
1088(end), with an N-terminal GST-tag,
expressed in a Baculovirus infected Sf9 cell
expression system. MW = 97 kDa.

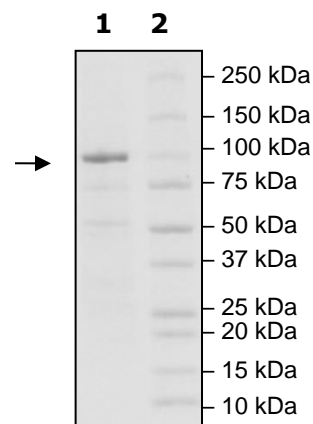
Quality Assurance

4-20% SDS-PAGE Coomassie staining

Lane 1:
LATS2
Lane 2:
Protein Marker

Purity: $\geq 80\%$

MW: 97 kDa



OUR PRODUCTS ARE FOR RESEARCH USE ONLY. NOT FOR DIAGNOSTIC OR THERAPEUTIC USE.

To place your order, please contact us by Phone **1.858.202.1401** Fax **1.858.481.8694**

Or you can Email us at: info@bpsbioscience.com

Please visit our website at: www.bpsbioscience.com