



# SZABO SCANDIC

Part of Europa Biosite

## Produktinformation



Forschungsprodukte & Biochemikalien



Zellkultur & Verbrauchsmaterial



Diagnostik & molekulare Diagnostik



Laborgeräte & Service

Weitere Information auf den folgenden Seiten!  
See the following pages for more information!



### Lieferung & Zahlungsart

siehe unsere [Liefer- und Versandbedingungen](#)

### Zuschläge

- Mindermengenzuschlag
- Trockeneiszuschlag
- Gefahrgutzuschlag
- Expressversand

### SZABO-SCANDIC HandelsgmbH

Quellenstraße 110, A-1100 Wien

T. +43(0)1 489 3961-0

F. +43(0)1 489 3961-7

[mail@szabo-scandic.com](mailto:mail@szabo-scandic.com)

[www.szabo-scandic.com](http://www.szabo-scandic.com)

[linkedin.com/company/szaboscandic](https://www.linkedin.com/company/szaboscandic) 

## Data Sheet

### VHL/CUL2/ELOB/ELOC/RBX1 Complex

Human, Recombinant

**Catalog #:** 100373

**Lot #:** 190503

**Conc.:** 0.31 mg/ml

**Formulated in:** 40 mM Tris-HCl, pH 8.0, 110 mM NaCl, 2.2 mM KCl, 20% glycerol, 3 mM DTT.

**Stability:** At least 6 months at  $-80^{\circ}\text{C}$ .  
 Avoid freeze/thaw cycles.

**References:**

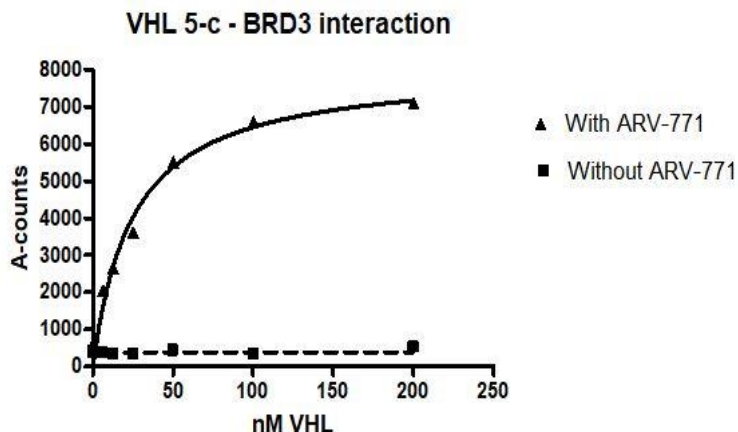
1. Kamura, T., *et al.*, *Science*. 1999; **284(5414)**: 657-661.
2. Stebbins, C.E., *et al.*, *Science*. 1999; **284(5413)**: 455-461.

**Description:** VHL/CUL2/ELOB/ELOC/RBX1 complex of human **VHL** (GenBank Accession No. NM\_000551) a.a. 2-212(end) with N-terminal FLAG-tag and MW= 25 kDa, human **CUL2** (GenBank Accession No. NM\_003591), a.a. 2-745(end) with N-terminal FLAG-tag and MW= 88 kDa, human **ELOB** (GenBank Accession No. NM\_007108), a.a. 2-118 with N-terminal FLAG-tag and MW= 14 kDa, **ELOC** (GenBank Accession No. NM\_005648), a.a. 2-112(end) with N-terminal His-tag and MW= 13 kDa human **Rbx1** (GenBank Accession No. NM\_014248), a.a. 2-108(end) with N-terminal His-tag and MW= 13 kDa, individually expressed in a HEK293 expression system.

**Assay Conditions:** ARV-771-mediated binding of VHL BPS #100373 to BET bromodomain was assessed using A-screen technology. Various amounts of VHL were incubated in 10- $\mu\text{l}$  reaction with ARV-771 and GST-BRD3(BD2) BPS #31033 at room temperature for one hour. After this, FLAG-acceptor beads and GSH-donor beads were added followed by detection of A-counts.

**Applications:** Useful for the study of protein degradation and PROTAC design, and selectivity profiling.

### Quality Assurance



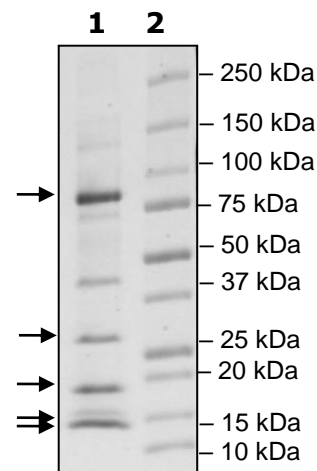
### 4-20% SDS-PAGE Coomassie staining

**Lane 1:**  
VHL/Cul2/Elob/Eloc/Rbx1

**Lane 2:**  
Protein Marker

**Purity:**  $\geq 80\%$

**MW:**  
 CUL2: 88 kDa  
 VHL: 25 kDa  
 ELOB: 14 kDa (as 18 kDa)  
 Rbx1: 13 kDa (as 15 kDa)  
 ELOC: 13 kDa



OUR PRODUCTS ARE FOR RESEARCH USE ONLY. NOT FOR DIAGNOSTIC OR THERAPEUTIC USE.

To place your order, please contact us by Phone **1.858.202.1401** Fax **1.858.481.8694**

Or you can Email us at: [info@bpsbioscience.com](mailto:info@bpsbioscience.com)

Please visit our website at: [www.bpsbioscience.com](http://www.bpsbioscience.com)