



SZABO SCANDIC

Part of Europa Biosite

Produktinformation



Forschungsprodukte & Biochemikalien



Zellkultur & Verbrauchsmaterial



Diagnostik & molekulare Diagnostik



Laborgeräte & Service

Weitere Information auf den folgenden Seiten!
See the following pages for more information!



Lieferung & Zahlungsart

siehe unsere [Liefer- und Versandbedingungen](#)

Zuschläge

- Mindermengenzuschlag
- Trockeneiszuschlag
- Gefahrgutzuschlag
- Expressversand

SZABO-SCANDIC HandelsgmbH

Quellenstraße 110, A-1100 Wien

T. +43(0)1 489 3961-0

F. +43(0)1 489 3961-7

mail@szabo-scandic.com

www.szabo-scandic.com

[linkedin.com/company/szaboscandic](https://www.linkedin.com/company/szaboscandic) 

Data Sheet

TET2, FLAG-Tag, His-Tag

Human recombinant, N-terminal FLAG-tag,
C-terminal His-tag

Catalog #: 100408

Lot #: 200205-1

Conc: 0.37 mg/ml

Formulated in: 40 mM Tris-HCl, pH 8.0, 110 mM NaCl, 2.2 mM KCl, 0.04% Tween-20, 3 mM DTT, 20% Glycerol and 100 µg/mL FLAG peptide.

Stability: At least 6 months at -80°C. Avoid freeze/thaw cycles.

References:

1. Myunggon, K., *et al.*, *Nature*. 2013;**497**: 122-126.
2. Shinsuke, I, *et al.*, *Nature*. 2010; **466**: 1129-1133.

Description: Human TET2, also known as Ten-eleven translocation 2 protein, and methylcytosine dioxygenase TET2, GenBank Accession #NM_001127208, a.a. 916-2002(end) with N-terminal FLAG-tag and C-terminal His-tag, expressed in a Baculovirus infected Sf9 cell expression system. MW = 126 kDa.

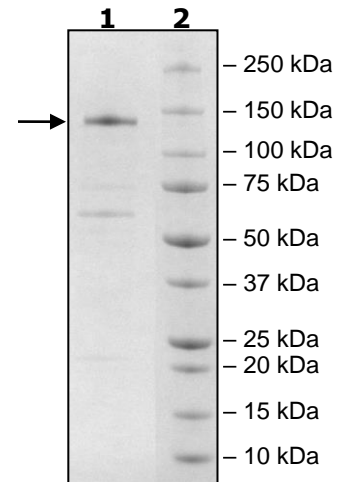
Quality Assurance

**4-20% SDS-PAGE
Coomassie staining**

Lane 1:
3 µg TET2
Lane 2:
Protein Marker

MW: 126 kDa

Purity: 74%



OUR PRODUCTS ARE FOR RESEARCH USE ONLY. NOT FOR DIAGNOSTIC OR THERAPEUTIC USE.

To place your order, please contact us by Phone **1.858.202.1401** Fax **1.858.481.8694**

Or you can Email us at: info@bpsbioscience.com

Please visit our website at: www.bpsbioscience.com