



SZABO SCANDIC

Part of Europa Biosite

Produktinformation



Forschungsprodukte & Biochemikalien



Zellkultur & Verbrauchsmaterial



Diagnostik & molekulare Diagnostik



Laborgeräte & Service

Weitere Information auf den folgenden Seiten!
See the following pages for more information!



Lieferung & Zahlungsart

siehe unsere [Liefer- und Versandbedingungen](#)

Zuschläge

- Mindermengenzuschlag
- Trockeneiszuschlag
- Gefahrgutzuschlag
- Expressversand

SZABO-SCANDIC HandelsgmbH

Quellenstraße 110, A-1100 Wien

T. +43(0)1 489 3961-0

F. +43(0)1 489 3961-7

mail@szabo-scandic.com

www.szabo-scandic.com

[linkedin.com/company/szaboscandic](https://www.linkedin.com/company/szaboscandic) 

Data Sheet

KRAS (G12C), His-Tag

Human, Recombinant, N-terminal His-tag

Catalog #: 100413

Lot #: 190731-G **Conc.:** 0.33 mg/ml

Formulated in: 40 mM Tris-HCl, pH 8.0, 122 mM NaCl, 2.2 mM KCl and 20% glycerol.

Stability: At least 6 months at -70°C. Avoid freeze/thaw cycles.

References:

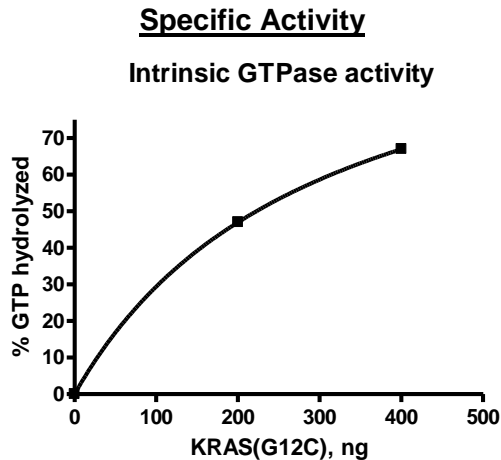
1. Lito, P., *et al.*, *Science*. 2016 Feb;**351(6273)**:604-608.
2. Dogan, S., *et al.*, *Clinical Cancer Research*. 2012 Nov;**18(22)**:6169-6177.

Description: Human KRAS also known as C-K-RAS, CFC2, and K-RAS2A, GenBank Accession No. NM_033360, a.a. 2-186, with G12C mutation and N-terminal His-tag, expressed in an E. coli expression system. MW=23 kDa.

Assay Conditions: Intrinsic GTPase reaction of KRAS (G12C) was conducted at room temperature for 60 min using GTPase-Glo (Promega) reagents with 1 μ M GTP.

Applications: Useful for the study of enzyme kinetics, screening inhibitors, and selectivity profiling.

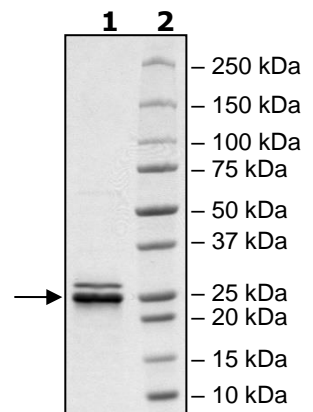
Quality Assurance



4-20% SDS-PAGE Coomassie staining

Lane 1:
2 μ g KRAS
Lane 2:
Protein Marker

MW: 23 kDa
Purity: 77%



OUR PRODUCTS ARE FOR RESEARCH USE ONLY. NOT FOR DIAGNOSTIC OR THERAPEUTIC USE.

To place your order, please contact us by Phone **1.858.202.1401** Fax **1.858.481.8694**

Or you can Email us at: info@bpsbioscience.com

Please visit our website at: www.bpsbioscience.com