



SZABO SCANDIC

Part of Europa Biosite

Produktinformation



Forschungsprodukte & Biochemikalien



Zellkultur & Verbrauchsmaterial



Diagnostik & molekulare Diagnostik



Laborgeräte & Service

Weitere Information auf den folgenden Seiten!
See the following pages for more information!



Lieferung & Zahlungsart

siehe unsere [Liefer- und Versandbedingungen](#)

Zuschläge

- Mindermengenzuschlag
- Trockeneiszuschlag
- Gefahrgutzuschlag
- Expressversand

SZABO-SCANDIC HandelsgmbH

Quellenstraße 110, A-1100 Wien

T. +43(0)1 489 3961-0

F. +43(0)1 489 3961-7

mail@szabo-scandic.com

www.szabo-scandic.com

[linkedin.com/company/szaboscandic](https://www.linkedin.com/company/szaboscandic) 

Data Sheet

Siglec8, Fc Fusion, Avi-Tag

Human, Recombinant protein, Fc-Avi-tag
C-terminal Avi-tag

Catalog #: 100421

Lot #: 191023

Conc.: 0.76 mg/ml

Formulated in: 8 mM Phosphate, pH 7.4,
110 mM NaCl, 2.2 mM KCl, and 20%
glycerol.

Stability: At least 6 months at -80°C . Avoid
freeze/thaw cycles.

Description: Human secreted Siglec8, also known as Sialic Acid Binding Ig Like Lectin 8, and SAF2, GenBank Accession No. NM_014442, a.a. 17-363, fused at the C-terminus of the Fc portion of human IgG1, with C-terminal Avi-tag™ expressed in a HEK293 cell expression system. MW = 67 kDa. This protein runs at a higher MW by SDS-PAGE due to glycosylation.

References:

1. Bochner, B.S., *et al.*, *JBC*. 2005 Feb; **280**: 4307-4312.
2. Nutku, E., *et al.*, *Blood*. 2003 Jun; **101(12)**: 5014-5020

Quality Assurance

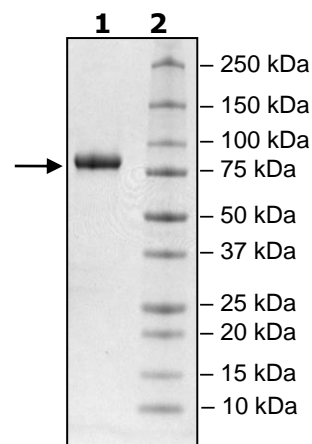
4-20% SDS-PAGE Coomassie staining

Lane 1:
4 μ g Siglec8

Lane 2:
Protein Marker

MW: 67 kDa + glycans

Purity: $\geq 90\%$



OUR PRODUCTS ARE FOR RESEARCH USE ONLY. NOT FOR DIAGNOSTIC OR THERAPEUTIC USE.

To place your order, please contact us by Phone **1.858.202.1401** Fax **1.858.481.8694**

Or you can Email us at: info@bpsbioscience.com

Please visit our website at: www.bpsbioscience.com