



SZABO SCANDIC

Part of Europa Biosite

Produktinformation



Forschungsprodukte & Biochemikalien



Zellkultur & Verbrauchsmaterial



Diagnostik & molekulare Diagnostik



Laborgeräte & Service

Weitere Information auf den folgenden Seiten!
See the following pages for more information!



Lieferung & Zahlungsart

siehe unsere [Liefer- und Versandbedingungen](#)

Zuschläge

- Mindermengenzuschlag
- Trockeneiszuschlag
- Gefahrgutzuschlag
- Expressversand

SZABO-SCANDIC HandelsgmbH

Quellenstraße 110, A-1100 Wien

T. +43(0)1 489 3961-0

F. +43(0)1 489 3961-7

mail@szabo-scandic.com

www.szabo-scandic.com

[linkedin.com/company/szaboscandic](https://www.linkedin.com/company/szaboscandic) 

Data Sheet

Siglec15, Fc Fusion, Avi-tag, Biotin-labeled

Human, Recombinant protein
C-terminal Avi-tag, Biotin labeled

Catalog #: 100424

Lot #: 190711

Conc.: 0.72 mg/ml

Formulated in: 8 mM Phosphate, pH 7.4,
110 mM NaCl, 2.2 mM KCl, and 20%
glycerol.

Stability: At least 6 months at -80°C . Avoid
freeze/thaw cycles.

References:

1. Angata, T., *et al.*, *Glycobiology*. 2007
May 4;**17(8)**:838-846.
2. Hiruma, Y., *et al.*, *BBRC*. 2011 Jun
10;**409(3)**:424-429

Description: Human secreted Sialic Acid Binding Ig Like Lectin 15 (Siglec15)-Fc fusion protein, also known as CD33 Antigen-Like 3 (CD33L3) and HsT1361, GenBank Accession No. NM_213602, a.a. 20-263, fused at the C-terminus of the Fc portion of human IgG1, with C-terminal Avi-tag, expressed in a HEK293 cell expression system and enzymatically biotinylated using Avi-tag™ technology. MW = 55 kDa.

Quality Assurance

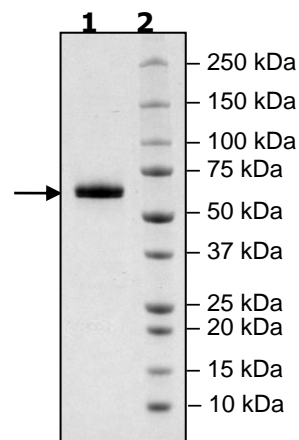
4-20% SDS-PAGE Coomassie staining

Lane 1:
4 μg Siglec15

Lane 2:
Protein Marker

MW: 55 kDa + glycans

Purity: $\geq 90\%$



OUR PRODUCTS ARE FOR RESEARCH USE ONLY. NOT FOR DIAGNOSTIC OR THERAPEUTIC USE.

To place your order, please contact us by Phone **1.858.202.1401** Fax **1.858.481.8694**

Or you can Email us at: info@bpsbioscience.com

Please visit our website at: www.bpsbioscience.com