



SZABO SCANDIC

Part of Europa Biosite

Produktinformation



Forschungsprodukte & Biochemikalien



Zellkultur & Verbrauchsmaterial



Diagnostik & molekulare Diagnostik



Laborgeräte & Service

Weitere Information auf den folgenden Seiten!
See the following pages for more information!



Lieferung & Zahlungsart

siehe unsere [Liefer- und Versandbedingungen](#)

Zuschläge

- Mindermengenzuschlag
- Trockeneiszuschlag
- Gefahrgutzuschlag
- Expressversand

SZABO-SCANDIC HandelsgmbH

Quellenstraße 110, A-1100 Wien

T. +43(0)1 489 3961-0

F. +43(0)1 489 3961-7

mail@szabo-scandic.com

www.szabo-scandic.com

[linkedin.com/company/szaboscandic](https://www.linkedin.com/company/szaboscandic) 



6042 Cornerstone Court W, Ste B
San Diego, CA 92121
Tel: 1.858.202.1401
Fax: 1.858.481.8694
Email: info@bpsbioscience.com

Data Sheet

Anti-CD19-Anti-CD3 Bispecific Antibody (Blinatumomab, CD19 BiTE)

Catalog #: 100441
Lot #: 190702 **Conc.:** 0.65 mg/ml

Host Species: Human

Formulated in: 8 mM phosphate, 110 mM NaCl, 2.2 mM KCl, pH 7.4, and 20% glycerol

Stability: Stable for at least 12 months at -80°C. Avoid freeze/thaw cycles.

Product description: Anti-CD19-Anti-CD3-His-Tag is a purified recombinant human bispecific T cell Engager (BiTE) based on Amgen's Blinatumomab. This BiTE has been tested for specific activity in both ELISA binding assay to CD19-biotin and functional reporter assays using Jurkat/NFAT-luc or Jurkat/IL2-Luc reporter cell lines in the presence of CD19+ Raji cells.

Purification: Ni-NTA affinity purification of the His-tag protein from HEK293 cells.

Background: Blinatumomab is a biopharmaceutical drug used as a second-line treatment for Philadelphia chromosome-negative relapsed or refractory acute lymphoblastic leukemia. It binds to CD19 on cancer cells (e.g. Raji cells) and CD3 on T cells simultaneously, thus bringing T lymphocytes closer to the cancer cells. The binding event potentiates unstimulated T cells and induces direct cytotoxicity against CD19+ cancer cells

Application: This product is for research use only. It is not suitable for human diagnostic or therapeutic use. The anti-CD19-Anti-CD3-His-Tag can be used as a reference BiTE for studying CD19+ cancer cell-mediated T cell activation, using either primary T cells or reporter cell lines such as Jurkat/NFAT-luc (BPS Bioscience #60621) or Jurkat/IL2-luc (BPS Bioscience #60481).

OUR PRODUCTS ARE FOR RESEARCH USE ONLY. NOT FOR DIAGNOSTIC OR THERAPEUTIC USE.

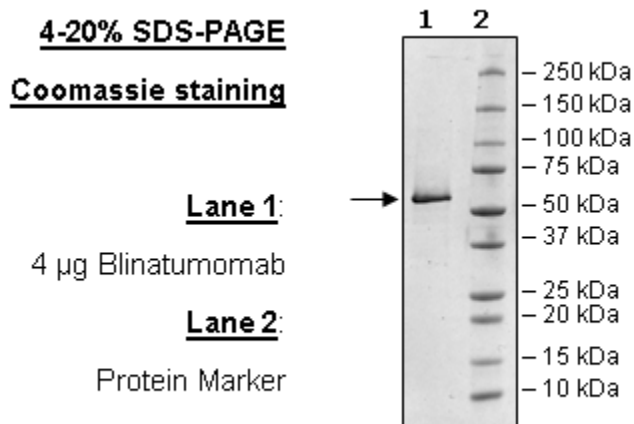
To place your order, please contact us by Phone **1.858.202.1401** Fax **1.858.481.8694**
Or you can Email us at: info@bpsbioscience.com
Please visit our website at: www.bpsbioscience.com

Fig. 1: Amino acid sequence of Blinatumomab

MALPVTALLLPLALLLHAARP
 DIQLTQSPASLAVSLGQRATISCKASQSVVDYDGD SYLNWYQQIPGQPPKLLIYDASNLVS
 GIPPRFSGSGSGTDFTLNIHPVEKVDAATYHCQQSTEDPWTFGGGTKLEIK **GGGGSGGGG**
SGGGGSQVQLQQSGAELVRPGSSVKISCKASGYAFSSYWMNWVKRPGQGLEWIGQIWPG
 DGDTNYNGKFKGKATLTAESSSTAYMQLSSLASEDSAVYFCARRETTTVGRYYYAMDYW
 GQGTTTVTVSSGGGGSDIKLQQSGAELARPGASVKMSCKTSGYTFTRYTMHWVKRPGQGL
 EWIGYINPSRGYTNYNQKFKDKATLTTDKSSSTAYMQLSSLTSEDSAVYYCARYDDHYC
 LDYWGQGTTLTVSSVE**GGGGSGGGSGGG**GGVDDIQLTQSPAIMSASPGKEKVTMTCRASSS
 VSYMNWYQQKSGTSPKRWIYDTSKVASGVPYRFSGSGSGTSSYSLTISMEAEADAATYYCQ
 QWSSNPLTFGAGTKLELK**HHHHHH**

(GGGG) are linkers

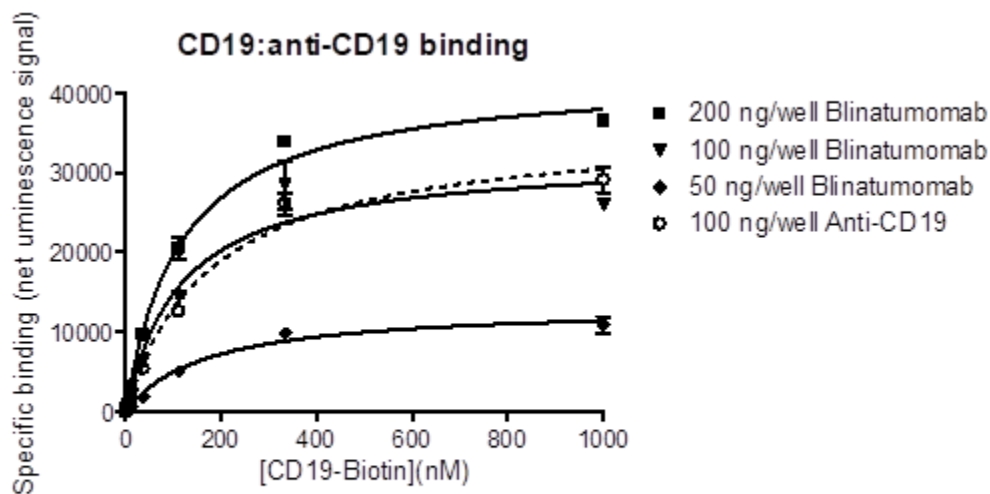
Fig. 2: Protein expression and purification of Anti-CD19-Anti-CD3-His-Tag



OUR PRODUCTS ARE FOR RESEARCH USE ONLY. NOT FOR DIAGNOSTIC OR THERAPEUTIC USE.

To place your order, please contact us by Phone **1.858.202.1401** Fax **1.858.481.8694**
 Or you can Email us at: info@bpsbioscience.com
 Please visit our website at: www.bpsbioscience.com

Fig. 3: ELISA assay shows specific binding of Blinatumomab to CD19 when the ELISA plate is coated with 3 different amounts of Blinatumomab and exposed to a CD19-Biotin titration.



MaxiSorp plate coated with Blinatumomab (#100441) or Anti-CD 19 (#100314)
 Titration of CD 19-Biotin (#79475) and signal developing with Streptavidin-HRP

Experimental Design and assay protocol for measuring Blinatumomab functional activity using Jurkat reporter cell lines:

- (1) Jurkat effector cells with endogenous TCR/CD3 and transfected reporter NFAT-Luc or IL-2 promoter-Luc are incubated with increasing concentrations of a CD19xCD3 bispecific Ab (e.g. Blinatumomab), in the presence or absence of CD19+ Raji cells.
- (2) The bispecific Ab (BiTE) simultaneously binds to TCR/CD3 on the Jurkat reporter cells and tumor antigen CD19 on the target Raji cells.
- (3) Bispecific Ab binding stimulates NFAT or IL-2 luciferase activity.

OUR PRODUCTS ARE FOR RESEARCH USE ONLY. NOT FOR DIAGNOSTIC OR THERAPEUTIC USE.

To place your order, please contact us by Phone **1.858.202.1401** Fax **1.858.481.8694**
 Or you can Email us at: info@bpsbioscience.com
 Please visit our website at: www.bpsbioscience.com

Fig. 4: Activation of NFAT Jurkat Reporter (BPS Bioscience #60621) by CD19xCD3 BiTE in the presence of CD19+ Raji Cells

**Activation of NFAT Jurkat Reporter by CD19xCD3 BiTE
 in the Presence of CD19+ Raji Cells**

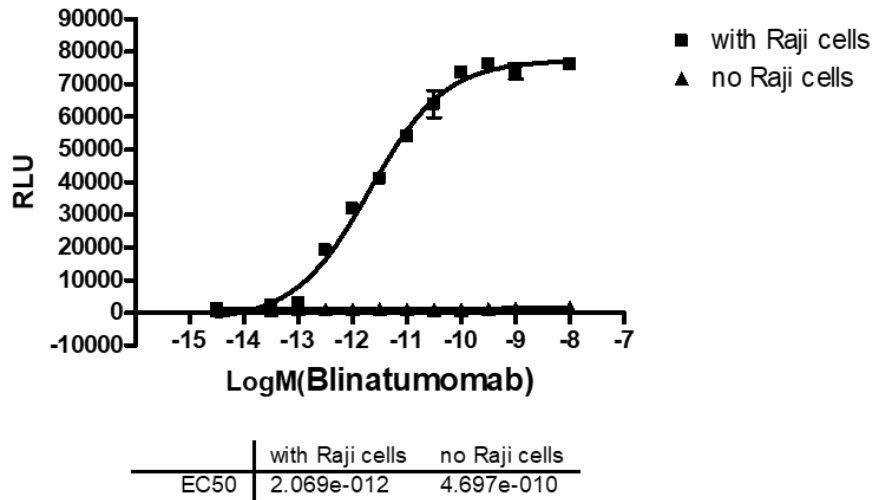
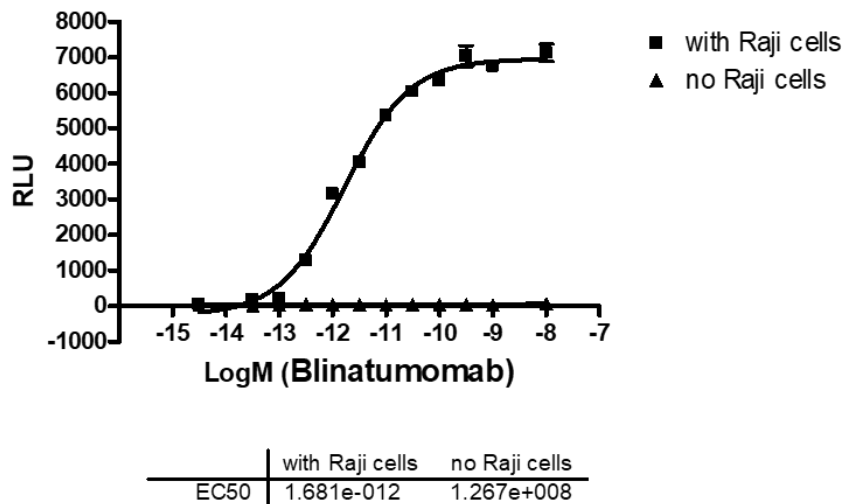


Fig. 5: Activation of IL-2 promoter Jurkat Reporter (BPS Bioscience #60481) by CD19xCD3 BiTE in the presence of CD19+ Raji Cells

**Activation of IL-2 Jurkat Reporter by CD19xCD3 BiTE
 in the Presence of CD19+ Raji Cells**



OUR PRODUCTS ARE FOR RESEARCH USE ONLY. NOT FOR DIAGNOSTIC OR THERAPEUTIC USE.

To place your order, please contact us by Phone **1.858.202.1401** Fax **1.858.481.8694**
 Or you can Email us at: info@bpsbioscience.com
 Please visit our website at: www.bpsbioscience.com