



# SZABO SCANDIC

Part of Europa Biosite

## Produktinformation



Forschungsprodukte & Biochemikalien



Zellkultur & Verbrauchsmaterial



Diagnostik & molekulare Diagnostik



Laborgeräte & Service

Weitere Information auf den folgenden Seiten!  
See the following pages for more information!



### Lieferung & Zahlungsart

siehe unsere [Liefer- und Versandbedingungen](#)

### Zuschläge

- Mindermengenzuschlag
- Trockeneiszuschlag
- Gefahrgutzuschlag
- Expressversand

### SZABO-SCANDIC HandelsgmbH

Quellenstraße 110, A-1100 Wien

T. +43(0)1 489 3961-0

F. +43(0)1 489 3961-7

[mail@szabo-scandic.com](mailto:mail@szabo-scandic.com)

[www.szabo-scandic.com](http://www.szabo-scandic.com)

[linkedin.com/company/szaboscandic](https://www.linkedin.com/company/szaboscandic) 

## Data Sheet

### PD-L1

Human, recombinant protein

**Catalog #:** 100443

**Lot #:** 190729-G1

**Conc.:** 1.73 mg/ml

**Formulated in:** 25 mM Tris-HCl pH 7.4, 150 mM NaCl, 1 mM EDTA.

**Description:** Human secreted Programmed Cell Death 1 Ligand 1 (PD-L1) protein, also known as CD274, PDCD1L1, and B7 homolog 1 (B7-H1), GenBank Accession No. NM\_014143, a.a. 19-239, expressed in an *E. coli* expression system. MW = 25 kDa.

**Stability:** At least 6 months at  $-80^{\circ}\text{C}$ . Avoid freeze/thaw cycles.

### References:

1. Freeman, G.J., *et al.*, *J Exp Med.* 2000 Oct 2;**192(7)**:1027-34.
2. Dong, H., *et al.*, *Nat Med.* 1999 Dec;**5(12)**:1365-9.

---

## **Quality Assurance**

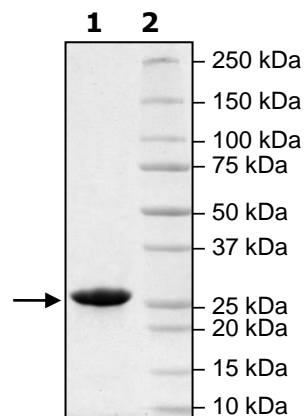
### 4-20% SDS-PAGE Coomassie staining

**Lane 1:**  
3  $\mu\text{g}$  PD-L1

**Lane 2:**  
Protein Marker

**MW:** 25 kDa

**Purity:** >90%



OUR PRODUCTS ARE FOR RESEARCH USE ONLY. NOT FOR DIAGNOSTIC OR THERAPEUTIC USE.

To place your order, please contact us by Phone **1.858.202.1401** Fax **1.858.481.8694**  
Or you can Email us at: [info@bpsbioscience.com](mailto:info@bpsbioscience.com)  
Please visit our website at: [www.bpsbioscience.com](http://www.bpsbioscience.com)