



SZABO SCANDIC

Part of Europa Biosite

Produktinformation



Forschungsprodukte & Biochemikalien



Zellkultur & Verbrauchsmaterial



Diagnostik & molekulare Diagnostik



Laborgeräte & Service

Weitere Information auf den folgenden Seiten!
See the following pages for more information!



Lieferung & Zahlungsart

siehe unsere [Liefer- und Versandbedingungen](#)

Zuschläge

- Mindermengenzuschlag
- Trockeneiszuschlag
- Gefahrgutzuschlag
- Expressversand

SZABO-SCANDIC HandelsgmbH

Quellenstraße 110, A-1100 Wien

T. +43(0)1 489 3961-0

F. +43(0)1 489 3961-7

mail@szabo-scandic.com

www.szabo-scandic.com

[linkedin.com/company/szaboscandic](https://www.linkedin.com/company/szaboscandic) 

Data Sheet

EPCAM, Avi-His-Tag

Human, recombinant, C-terminal Avi-His-tag

Catalog #: 100461

Lot #: 190801-1

Conc.: 1.28 mg/ml

Formulated in: 8 mM phosphate, pH 7.4, 110 mM NaCl, 2.2 mM KCl, and 20% glycerol.

Stability: At least 6 months at -80°C . Avoid freeze/thaw cycles.

References:

1. Went, P.T.H, *et al.* 2004. *Human Pathology*. **35(1)**: 122-128
2. Maetzel, D., *et al.* 2009. *Nat. Cell. Bio.* **11**: 162-171.

Description: Human recombinant Epithelial Cell Adhesion Molecule (EPCAM) also known as Tumor-Associated Calcium Signal Transducer 1, Cell Surface Glycoprotein Trop-1, and MIC18, GenBank Accession No. NM_178135, a.a 24-265, with a C-terminal Avi-His-Tag™, expressed in a HEK293 cell expression system, MW=31 kDa. This protein runs at a higher MW by SDS-PAGE due to glycosylation.

Quality Assurance

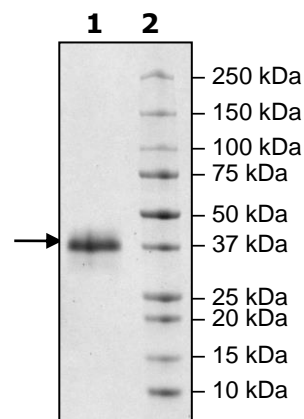
4-20% SDS-PAGE Coomassie staining

Lane 1:
4 μg EPCAM

Lane 2:
Protein Marker

MW: 31 kDa+glycans

Purity: $\geq 90\%$



OUR PRODUCTS ARE FOR RESEARCH USE ONLY. NOT FOR DIAGNOSTIC OR THERAPEUTIC USE.

To place your order, please contact us by Phone **1.858.202.1401** Fax **1.858.481.8694**

Or you can Email us at: info@bpsbioscience.com

Please visit our website at: www.bpsbioscience.com