



SZABO SCANDIC

Part of Europa Biosite

Produktinformation



Forschungsprodukte & Biochemikalien



Zellkultur & Verbrauchsmaterial



Diagnostik & molekulare Diagnostik



Laborgeräte & Service

Weitere Information auf den folgenden Seiten!
See the following pages for more information!



Lieferung & Zahlungsart

siehe unsere [Liefer- und Versandbedingungen](#)

Zuschläge

- Mindermengenzuschlag
- Trockeneiszuschlag
- Gefahrgutzuschlag
- Expressversand

SZABO-SCANDIC HandelsgmbH

Quellenstraße 110, A-1100 Wien

T. +43(0)1 489 3961-0

F. +43(0)1 489 3961-7

mail@szabo-scandic.com

www.szabo-scandic.com

[linkedin.com/company/szaboscandic](https://www.linkedin.com/company/szaboscandic) 

Data Sheet

NKp46, Fc-fusion (IgG1), Avi-Tag

Human, recombinant, C-terminal Fc-Avi-Tag
Catalog #: 100465
Lot #: 190828 **Conc.:** 0.84 mg/ml

Formulation: 8 mM Phosphate, pH 7.4, 110 mM NaCl, 2.2 mM KCl, and 20% glycerol.

Stability: Stable for at least 6 months at -80°C. Avoid freeze/thaw cycles.

References:

1. Mandelboim, O., *et al.*, *Nature*. 2001 Feb; **409**: 1055-1060.
2. Mandelboim, O., *et al.*, *The Int'l J. of Biochem. & Cell Bio.* 2001 Jul; **33(12)**: 1147-1150

Description: Human NKp46, also known as CD335, Natural Cytotoxicity Triggering Receptor 1, Lymphocyte Antigen 94 Homolog, and Natural Killer Cell P46-Related Protein, GenBank Accession No. NM_004829, a.a. 22-258, fused at the C-terminus with the Fc portion of human IgG1 followed by a C-terminal Avi-tag™ and expressed in a HEK293 cell expression system. MW=56 kDa. This protein runs at a higher MW by SDS-PAGE due to glycosylation.

Quality Assurance

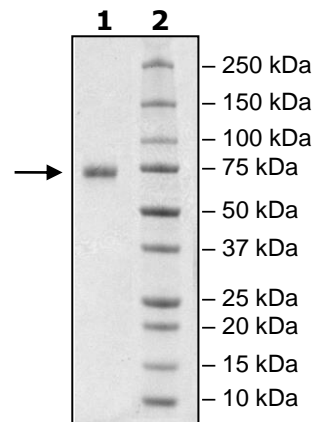
**4-20% SDS-PAGE
Coomassie staining**

Lane 1:
4µg NKp46

Lane 2:
Protein Marker

MW: 56 kDa +glycans

Purity: ≥90%



OUR PRODUCTS ARE FOR RESEARCH USE ONLY. NOT FOR DIAGNOSTIC OR THERAPEUTIC USE.

To place your order, please contact us by Phone **1.858.202.1401** Fax **1.858.481.8694**
 Or you can Email us at: info@bpsbioscience.com
 Please visit our website at: www.bpsbioscience.com