



SZABO SCANDIC

Part of Europa Biosite

Produktinformation



Forschungsprodukte & Biochemikalien



Zellkultur & Verbrauchsmaterial



Diagnostik & molekulare Diagnostik



Laborgeräte & Service

Weitere Information auf den folgenden Seiten!
See the following pages for more information!



Lieferung & Zahlungsart

siehe unsere [Liefer- und Versandbedingungen](#)

Zuschläge

- Mindermengenzuschlag
- Trockeneiszuschlag
- Gefahrgutzuschlag
- Expressversand

SZABO-SCANDIC HandelsgmbH

Quellenstraße 110, A-1100 Wien

T. +43(0)1 489 3961-0

F. +43(0)1 489 3961-7

mail@szabo-scandic.com

www.szabo-scandic.com

[linkedin.com/company/szaboscandic](https://www.linkedin.com/company/szaboscandic) 

Data Sheet

COMT, His-Tag

Human, recombinant, C-terminal His-tag

Catalog #: 100490

Lot #: 190927

Conc.: 3.83 mg/ml

Description: Human COMT, also known as Catechol-O-Methyltransferase, Testicular Tissue Protein Li 42, and HEL-S-98n, GenBank Accession No. NM_000754, a.a. 52-271, with C-terminal His-tag, expressed in a *E. coli* cell expression system. MW=25 kDa.

Formulated in: 40 mM Tris-HCl pH8.0, 110 mM NaCl, 2.2 mM KCl, 0.04% Tween-20, 20% glycerol and 150mM Imidazole.

Stability: At least 6 months at -80°C. Avoid freeze/thaw cycles.

References:

1. Egan, M.F., *et al. PNAS*, **98(12)**: 6917-6922 (2001).
2. Zubieta, J-K., *et al. Science*, **299(5610)**: 1240-1243 (2003).

Quality Assurance

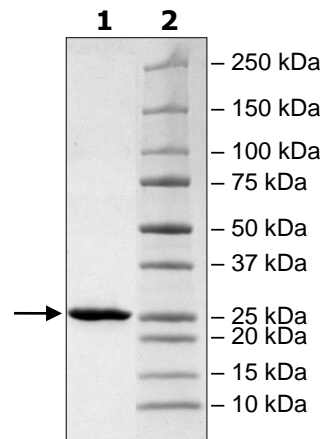
4-20% SDS-PAGE Coomassie staining

Lane 1:
4 µg COMT

Lane 2:
Protein Marker

MW: 25 kDa

Purity: ≥90%



OUR PRODUCTS ARE FOR RESEARCH USE ONLY. NOT FOR DIAGNOSTIC OR THERAPEUTIC USE.

To place your order, please contact us by Phone **1.858.202.1401** Fax **1.858.481.8694**

Or you can Email us at: info@bpsbioscience.com

Please visit our website at: www.bpsbioscience.com