



# SZABO SCANDIC

Part of Europa Biosite

## Produktinformation



Forschungsprodukte & Biochemikalien



Zellkultur & Verbrauchsmaterial



Diagnostik & molekulare Diagnostik



Laborgeräte & Service

Weitere Information auf den folgenden Seiten!  
See the following pages for more information!



### Lieferung & Zahlungsart

siehe unsere [Liefer- und Versandbedingungen](#)

### Zuschläge

- Mindermengenzuschlag
- Trockeneiszuschlag
- Gefahrgutzuschlag
- Expressversand

### SZABO-SCANDIC HandelsgmbH

Quellenstraße 110, A-1100 Wien

T. +43(0)1 489 3961-0

F. +43(0)1 489 3961-7

[mail@szabo-scandic.com](mailto:mail@szabo-scandic.com)

[www.szabo-scandic.com](http://www.szabo-scandic.com)

[linkedin.com/company/szaboscandic](https://www.linkedin.com/company/szaboscandic) 

## Data Sheet

### RBD-c-RAF, GST-tag

Human, Recombinant, N-terminal GST-tag  
**Catalog #:** 100519  
**Lot #:** 200123-1      **Conc.:** 0.97 mg/ml

**Formulated in:** 40 mM Tris-HCl pH 8.0,  
 110 mM NaCl, 2.2 mM KCl, 20% glycerol.

**Stability:** At least 6 months at  $-70^{\circ}\text{C}$ . Avoid  
 freeze/thaw cycles.

**References:**

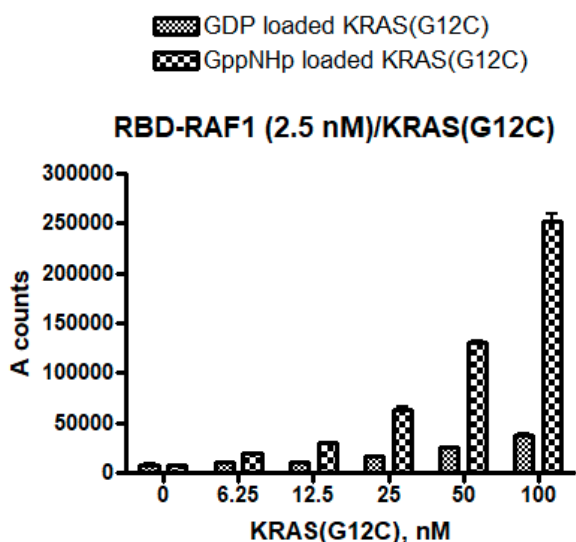
1. Rooij, J., *et al.*, *Oncogene*. 1997;**14**:623-625.
2. Bhaswati, P., *et al.*, *Nature Genetics*. 2007;**39**:1007-1012.

**Description:** Human Ras Binding Domain (RBD) of Raf-1 Proto-Oncogene, Serine/Threonine Kinase (RAF1) also known as C-Raf and NS5, with N-terminal GST-tag, GenBank Accession No. NM\_002880, a.a. 50-140, expressed in an *E. coli* expression system. MW=36 kDa.

**Assay Conditions:** GppNHp (or GDP) loaded His-tag KRAS(G12C) at various concentrations (BPS Bioscience #100641 and BPS Bioscience #100640) was incubated with 2.5 nM GST-tag RBD-RAF1 for 1 hour at room temperature. KRAS(G12C)/RBD-RAF1 binding was analyzed by AlphaScreening using GSH-Acceptor beads and Nickle Donor beads (PerkinElmer).

**Application:** Useful for studying RAS/RAF binding study as well as inhibitor screening for RAS/RAF interaction.

## Quality Assurance

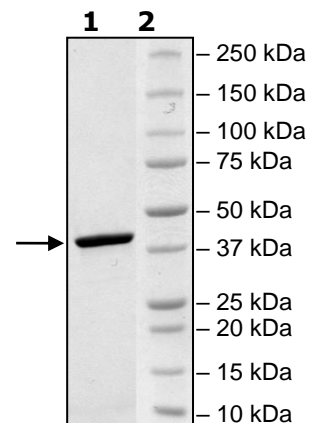


### 4-20% SDS-PAGE Coomassie staining

**Lane 1:**  
 2 $\mu\text{g}$  RAF1  
**Lane 2:**  
 Protein Marker

**MW:** 36 kDa

**Purity:**  $\geq 90\%$



OUR PRODUCTS ARE FOR RESEARCH USE ONLY. NOT FOR DIAGNOSTIC OR THERAPEUTIC USE.

To place your order, please contact us by Phone **1.858.202.1401**, Fax **1.858.259.5734**  
 Or you can Email us at: [info@bpsbioscience.com](mailto:info@bpsbioscience.com)  
 Please visit our website at: [www.bpsbioscience.com](http://www.bpsbioscience.com)