



SZABO SCANDIC

Part of Europa Biosite

Produktinformation



Forschungsprodukte & Biochemikalien



Zellkultur & Verbrauchsmaterial



Diagnostik & molekulare Diagnostik



Laborgeräte & Service

Weitere Information auf den folgenden Seiten!
See the following pages for more information!



Lieferung & Zahlungsart

siehe unsere [Liefer- und Versandbedingungen](#)

Zuschläge

- Mindermengenzuschlag
- Trockeneiszuschlag
- Gefahrgutzuschlag
- Expressversand

SZABO-SCANDIC HandelsgmbH

Quellenstraße 110, A-1100 Wien

T. +43(0)1 489 3961-0

F. +43(0)1 489 3961-7

mail@szabo-scandic.com

www.szabo-scandic.com

[linkedin.com/company/szaboscandic](https://www.linkedin.com/company/szaboscandic) 

Data Sheet

CD24, Fc Fusion, Avi-tag

Human, Recombinant protein,
C-terminal Fc-Avi-tag

Catalog #: 100527

Lot #: 191023

Conc.: 1.53 mg/ml

Formulated in: 8 mM Phosphate, pH 7.4,
110 mM NaCl, 2.2 mM KCl, and 20%
glycerol.

Stability: At least 6 months at -80°C . *Avoid
freeze/thaw cycles.*

Description: Human secreted CD24, also known as Signal Transducer CD24, Small Cell Lung Carcinoma Cluster 4 Antigen and CD24A, GenBank Accession No. NM_013230, a.a. 27-59(end), fused at the C-terminus of the Fc portion of human IgG1, with C-terminal Avi-tag™, expressed in a HEK293 cell expression system. MW = 32 kDa. This protein runs at a higher MW by SDS-PAGE due to glycosylation.

References:

1. Chen, G-Y., *et al.*, *Science*. 2009 March; **323(5922)**:1722-1725.
2. Phillips, T.M., *et al.*, *JNCI*. 2006 Dec; **98(24)**:1777-1785.

Quality Assurance

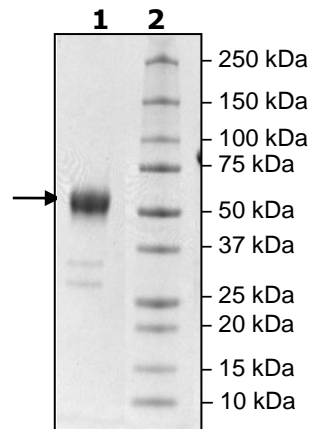
4-20% SDS-PAGE Coomassie staining

Lane 1:
4 μg CD24

Lane 2:
Protein Marker

MW: 32 kDa + glycans

Purity: $\geq 90\%$



OUR PRODUCTS ARE FOR RESEARCH USE ONLY. NOT FOR DIAGNOSTIC OR THERAPEUTIC USE.

To place your order, please contact us by Phone **1.858.202.1401** Fax **1.858.481.8694**

Or you can Email us at: info@bpsbioscience.com

Please visit our website at: www.bpsbioscience.com